



Compressor  
Voltage Code : FZ

FH4522Z

High Temp. Commercial (HP)

220 - 240V 1~ 50 Hz

R404A

AHC4522ZFZ

Operating conditions : **Customized... / 50 Hz / Dew**

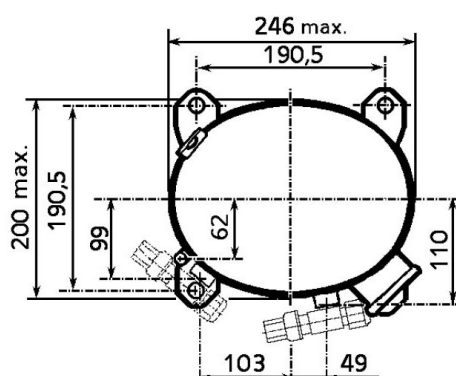
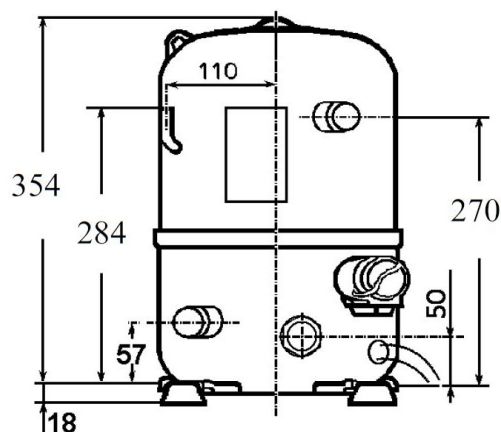
**Sound Power**  
ISO3745 / ISO 3743-1

Evaporating Temp. : -10.0 °C  
Superheat : 10.0 K  
Return gas temp. : 10.0 °C  
Condensing Temp. : 45.0 °C  
Subcooling : 10.0 K  
Liquid : 34.7 °C

Refrig. Capacity : **2680 Watt**

Power Input : 1531 Watt  
Amps : 6.90 A  
C.O.P : 1.75 Watt/W

71 dBA



Displacement (cc) 39.9  
Net Weight (Kg) 32.0  
Oil Quantity (cc) 1330.0  
Oil Type Polyolester  
Expansion Device Capillary\_Tube/Expansion\_Valve  
Cooling Fan  
Main Winding (Ohm) 1.3  
Start Winding (Ohm) 4.2

Current  
RLA (A) 9.7  
MCC (A) 16  
LRA (A) 46

Electrical Equipment CSR

Overload Interne  
Start Capacitor 125 µF / 330 V  
Run Capacitor 30 µF / 400 V

Potential Relay RVA4I\*\*  
Pick Up 204/233V  
Drop Out 50/110V  
Optional 3ARR3\*6AU\*

Refrigerating connection for OD  
Suction Tube 15.9 (5/8")  
Discharge Tube 12.7 (1/2")  
Process Tube 6.35 (1/4")

Certificates :



Note : Tecumseh reserves the right to change information contained in this document without notification.

**FH4522Z**

**Tension FZ : 220 - 240V 1~ 50 Hz**

Les performances sont données dans les **conditions EN12900** :  
Condition Dew

Gaz aspirés : 20.0 °C  
Sous refroidissement : 0.0 K

The performance data are in **EN12900 conditions** :  
Dew Condition

Return gas : 20.0 °C  
Subcooling : 0.0 K

## 50 Hz R404A



**N°226CT-F**

4   T condensation	5   T évaporation	(°C)	-25	-20	-15	-10	-5	0	5	10	15
<b>30</b>	1   P frigorifique	(Watt)	1657	2246	2944	3766	4725	5838	7120	8584	10246
	2   P absorbée	(W)	1013	1163	1297	1419	1531	1637	1740	1843	1949
	3   I absorbée	(A)	4.75	5.36	5.93	6.46	6.96	7.41	7.81	8.18	8.51
<b>40</b>	1   P frigorifique	(Watt)	1188	1715	2323	3027	3840	4780	5859	7094	8499
	2   P absorbée	(W)	961	1161	1340	1500	1646	1780	1905	2024	2141
	3   I absorbée	(A)	4.56	5.35	6.09	6.80	7.47	8.09	8.68	9.22	9.72
<b>50</b>	1   P frigorifique	(Watt)		1201	1718	2303	2970	3734	4611	5615	6761
	2   P absorbée	(W)		1088	1328	1544	1740	1918	2082	2234	2379
	3   I absorbée	(A)		5.14	6.07	6.95	7.79	8.59	9.35	10.1	10.7
<b>60</b>	1   P frigorifique	(Watt)			1142	1607	2126	2715	3388	4160	5047
	2   P absorbée	(W)			1191	1479	1742	1981	2200	2403	2591
	3   I absorbée	(A)			5.85	6.90	7.92	8.90	9.83	10.7	11.6

© 2019 Tecumseh Products Company  
All rights reserved

1 = cooling capacity 2 = power input 3 = current 4 = condensing temperature 5 = evaporating temperature

**Nota : Tecumseh se réserve le droit de modifier les informations contenues dans ce document sans préavis.**

**Note : Tecumseh reserves the right to change information contained in this document without notification.**