

Compressor

Voltage Code : FZ

CAJ9510T-FZ

High Temp. Commercial (MHP)

220 - 240V 1~ 50 Hz

R22

AJK510T-FZ3B

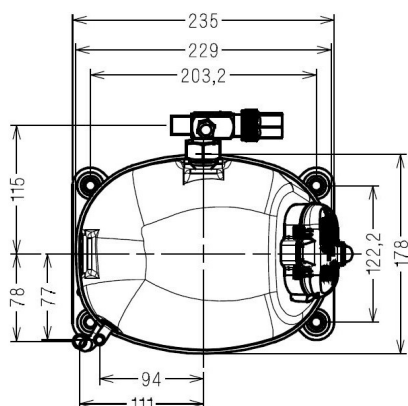
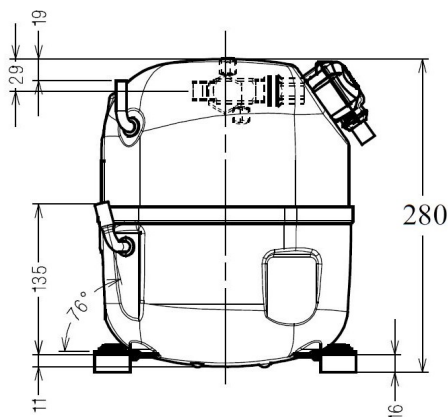
Operating conditions : **Customized... / 50 Hz / Dew**

Sound Power
ISO3745 / ISO 3743-1

Evaporating Temp. : -10.0 °C
Superheat : 10.0 K
Return gas temp. : 10.0 °C
Condensing Temp. : 45.0 °C
Subcooling : 10.0 K
Liquid : 34.7 °C

Refrig. Capacity : **1352 Watt**

Power Input : 749 Watt
Amps : 3.55 A
C.O.P : 1.80 Watt/W



Displacement (cc) 18.3
Net Weight (Kg) 20.7
Oil Quantity (cc) 475.0
Oil Type Synthetic_Alkylate
Expansion Device Capillary_Tube/Expansion_Valve
Cooling Fan
Main Winding (Ohm) 2.4
Start Winding (Ohm) 8.8

Current
RLA (A) 4.8
MCC (A) 7.8
LRA (A) 29.5

Electrical Equipment CSR

Overload MST22AIN
Time Check 7.5s - 14s / 20.5 A
Open Temp 120° C
Close Temp 69° C
Optional T0489

Start Capacitor 100 µF / 330 V
Run Capacitor 15 µF / 400 V

Potential Relay RVA40**
Pick Up 280/310V
Drop Out 60/121V
Optional 3ARR3*6AC*

Refrigerating connection for OD
Suction Tube 15.9 (5/8")
Discharge Tube 7.9 (5/16")
Process Tube 6.35 (1/4")

Certificates :



Note : Tecumseh reserves the right to change information contained in this document without notification.



Tecumseh

CAJ9510T-FZ	Tension FZ : 220 - 240V 1~ 50 Hz
--------------------	----------------------------------

Les performances sont données dans les **conditions EN12900** :
Condition Dew

Gaz aspirés : 20.0 °C
Sous refroidissement : 0.0 K

The performance data are in **EN12900 conditions** :
Dew Condition

Return gas : 20.0 °C
Subcooling : 0.0 K

50 Hz R22

N°234ET-FZ

4 T condensation	5 T évaporation	(°C)	-20	-15	-10	-5	0	5	10	15
40	1 P frigorifique	(Watt)	890	1139	1432	1779	2187	2665	3221	3863
	2 P absorbée	(W)	601	662	717	767	812	853	889	921
	3 I absorbée	(A)	2.90	3.17	3.42	3.64	3.84	4.02	4.18	4.32
50	1 P frigorifique	(Watt)	741	965	1224	1527	1882	2297	2781	3342
	2 P absorbée	(W)	624	704	779	847	910	968	1021	1070
	3 I absorbée	(A)	2.99	3.34	3.68	3.99	4.28	4.54	4.79	5.01
60	1 P frigorifique	(Watt)		787	1015	1277	1582	1938	2352	2835
	2 P absorbée	(W)		730	827	917	1002	1082	1155	1224
	3 I absorbée	(A)		3.49	3.91	4.30	4.68	5.03	5.36	5.67

© 2019 Tecumseh Products Company
All rights reserved

1 = cooling capacity 2 = power input 3 = current 4 = condensing temperature 5 = evaporating temperature

Nota : Tecumseh se réserve le droit de modifier les informations contenues dans ce document sans préavis.

Note : Tecumseh reserves the right to change information contained in this document without notification.