



Compressor
Voltage Code : TZ

TAJ9513Z-TZ

High Temp. Commercial (MHP)

400V 3~ 50Hz / 440V 3~ 60 Hz

R404A

AJK513Z-TZ1A

Operating conditions : **Customized... / 50 Hz / Dew**

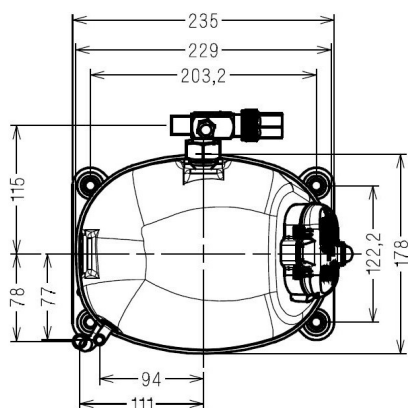
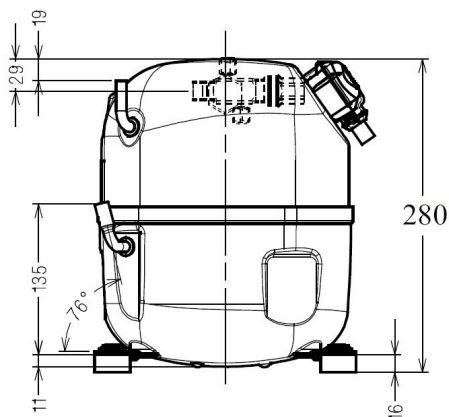
Sound Power
ISO3745 / ISO 3743-1

Evaporating Temp. : -10.0 °C
Superheat : 10.0 K
Return gas temp. : 10.0 °C
Condensing Temp. : 45.0 °C
Subcooling : 10.0 K
Liquid : 34.7 °C

Refrig. Capacity : **1768 Watt**

Power Input : 995 Watt
Amps : 1.89 A
C.O.P : 1.78 Watt/W

62 dBA



Displacement (cc) 24.2
Net Weight (Kg) 19.9
Oil Quantity (cc) 475.0
Oil Type Polyolester
Expansion Device Capillary_Tube/Expansion_Valve
Cooling Fan
Main Winding (Ohm) 15.3

Current
RLA (A) 2.8 | 2.8
MCC (A) 4.4 | 4.5
LRA (A) 16.7 | 17.3

Electrical Equipment TRI

Overload Interne

Refrigerating connection for OD

Suction Tube 15.9 (5/8")
Discharge Tube 7.9 (5/16")
Process Tube 6.35 (1/4")

Certificates :



Note : Tecumseh reserves the right to change information contained in this document without notification.

TAJ9513Z-TZ	Tension TZ : 400V 3~ 50Hz / 440V 3~ 60 Hz
--------------------	--

Les performances sont données dans les conditions EN12900 :	Gaz aspirés : 20.0 °C
Condition Dew	Sous refroidissement : 0.0 K
The performance data are in EN12900 conditions :	Return gas : 20.0 °C
Dew Condition	Subcooling : 0.0 K

50 Hz R404A											
											N°224JU-TZ
4 T condensation	5 T évaporation	(°C)	-25	-20	-15	-10	-5	0	5	10	15
30	1 P frigorifique	(Watt)	1139	1497	1920	2418	3000	3676	4454	5343	6354
	2 P absorbée	(W)	660	734	807	876	939	992	1034	1062	1073
	3 I absorbée	(A)	1.47	1.57	1.66	1.74	1.81	1.87	1.93	1.98	2.02
40	1 P frigorifique	(Watt)	861	1182	1551	1976	2467	3034	3685	4430	5277
	2 P absorbée	(W)	693	780	870	960	1046	1127	1200	1263	1313
	3 I absorbée	(A)	1.46	1.60	1.73	1.84	1.96	2.06	2.16	2.25	2.33
50	1 P frigorifique	(Watt)		867	1182	1536	1938	2397	2923	3524	4210
	2 P absorbée	(W)		817	921	1028	1136	1242	1344	1439	1524
	3 I absorbée	(A)		1.61	1.78	1.93	2.08	2.23	2.36	2.49	2.61
60	1 P frigorifique	(Watt)			817	1101	1415	1768	2169	2628	3154
	2 P absorbée	(W)			967	1089	1216	1344	1472	1596	1714
	3 I absorbée	(A)			1.80	2.00	2.19	2.38	2.55	2.72	2.88

60 Hz R404A											
											N°224JU-TZ
4 T condensation	5 T évaporation	(°C)	-25	-20	-15	-10	-5	0	5	10	15
30	1 P frigorifique	(Watt)	1366	1786	2275	2841	3497	4251	5114	6097	7211
	2 P absorbée	(W)	802	903	1001	1094	1184	1270	1353	1433	1511
	3 I absorbée	(A)	1.45	1.56	1.67	1.77	1.86	1.94	2.02	2.10	2.16
40	1 P frigorifique	(Watt)	1037	1420	1853	2345	2906	3548	4280	5112	6056
	2 P absorbée	(W)	820	950	1075	1193	1306	1414	1517	1615	1708
	3 I absorbée	(A)	1.46	1.62	1.77	1.91	2.05	2.18	2.31	2.43	2.54
50	1 P frigorifique	(Watt)		1050	1423	1836	2301	2826	3423	4101	4871
	2 P absorbée	(W)		959	1119	1271	1416	1553	1684	1808	1925
	3 I absorbée	(A)		1.62	1.82	2.01	2.19	2.37	2.54	2.70	2.86
60	1 P frigorifique	(Watt)			996	1328	1691	2097	2555	3075	3669
	2 P absorbée	(W)			1118	1311	1495	1670	1836	1994	2143
	3 I absorbée	(A)			1.81	2.05	2.28	2.50	2.72	2.93	3.13

1 = cooling capacity 2 = power input 3 = current 4 = condensing temperature 5 = evaporating temperature

Nota : Tecumseh se réserve le droit de modifier les informations contenues dans ce document sans préavis.

Note : Tecumseh reserves the right to change information contained in this document without notification.