



Compressor
Voltage Code : TZ

TAJ4517Z-TZ

High Temp. Commercial (HP)

400V 3~ 50Hz / 440V 3~ 60 Hz

R404A

AJ4517Z-TZ1C

Operating conditions : **Customized... / 50 Hz / Dew**

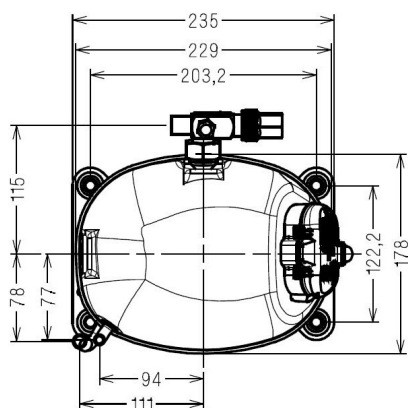
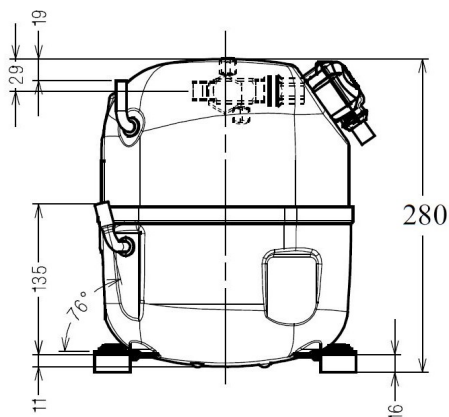
Sound Power
ISO3745 / ISO 3743-1

Evaporating Temp. : -10.0 °C
Superheat : 10.0 K
Return gas temp. : 10.0 °C
Condensing Temp. : 45.0 °C
Subcooling : 10.0 K
Liquid : 34.7 °C

Refrig. Capacity : **2073 Watt**

Power Input : 1182 Watt
Amps : 2.46 A
C.O.P : 1.75 Watt/W

62 dBA



Displacement (cc) 25.95
Net Weight (Kg) 20.0
Oil Quantity (cc) 475.0
Oil Type Polyolester
Expansion Device Capillary_Tube/Expansion_Valve
Cooling Fan
Main Winding (Ohm) 11.0

Current
RLA (A) 3 | 3
MCC (A) 4.4 | 4.8
LRA (A) 18 | 18

Electrical Equipment TRI

Overload Interne

Refrigerating connection for OD

Suction Tube 15.9 (5/8")
Discharge Tube 9.5 (3/8")
Process Tube 6.35 (1/4")

Certificates :



Note : Tecumseh reserves the right to change information contained in this document without notification.

TAJ4517Z-TZ	Tension TZ : 400V 3~ 50Hz / 440V 3~ 60 Hz
--------------------	--

Les performances sont données dans les conditions EN12900 :	Gaz aspirés : 20.0 °C
Condition Dew	Sous refroidissement : 0.0 K
The performance data are in EN12900 conditions :	Return gas : 20.0 °C
Dew Condition	Subcooling : 0.0 K

50 Hz R404A											
N°224LU-TZ											
4 T condensation	5 T évaporation	(°C)	-25	-20	-15	-10	-5	0	5	10	15
30	1 P frigorifique	(Watt)	1332	1754	2237	2793	3431	4162	4997	5945	7017
	2 P absorbée	(W)	792	884	965	1040	1108	1174	1238	1304	1373
	3 I absorbée	(A)	2.01	2.10	2.19	2.27	2.35	2.43	2.49	2.56	2.61
40	1 P frigorifique	(Watt)	995	1386	1821	2309	2861	3487	4199	5005	5917
	2 P absorbée	(W)	805	928	1038	1138	1230	1315	1396	1476	1556
	3 I absorbée	(A)	2.01	2.15	2.28	2.41	2.53	2.65	2.76	2.87	2.97
50	1 P frigorifique	(Watt)		1008	1389	1805	2266	2783	3366	4026	4773
	2 P absorbée	(W)		940	1087	1221	1343	1456	1562	1663	1762
	3 I absorbée	(A)		2.16	2.34	2.51	2.68	2.84	2.99	3.14	3.29
60	1 P frigorifique	(Watt)			958	1296	1662	2065	2515	3024	3601
	2 P absorbée	(W)			1101	1276	1437	1585	1724	1855	1981
	3 I absorbée	(A)			2.36	2.58	2.79	3.00	3.20	3.39	3.58

60 Hz R404A											
N°224LU-TZ											
4 T condensation	5 T évaporation	(°C)	-25	-20	-15	-10	-5	0	5	10	15
30	1 P frigorifique	(Watt)	1594	2085	2633	3249	3950	4747	5655	6688	7860
	2 P absorbée	(W)	932	1061	1170	1268	1361	1455	1558	1677	1818
	3 I absorbée	(A)	1.77	1.88	2.00	2.11	2.23	2.35	2.48	2.60	2.73
40	1 P frigorifique	(Watt)	1181	1656	2166	2722	3339	4030	4810	5693	6692
	2 P absorbée	(W)	902	1085	1240	1374	1494	1608	1721	1841	1975
	3 I absorbée	(A)	1.77	1.92	2.07	2.22	2.38	2.54	2.70	2.87	3.03
50	1 P frigorifique	(Watt)		1192	1657	2147	2674	3254	3900	4626	5445
	2 P absorbée	(W)		1042	1259	1446	1610	1759	1898	2036	2179
	3 I absorbée	(A)		1.93	2.12	2.31	2.50	2.70	2.90	3.10	3.31
60	1 P frigorifique	(Watt)			1126	1542	1975	2437	2942	3505	4139
	2 P absorbée	(W)			1205	1462	1687	1887	2070	2242	2410
	3 I absorbée	(A)			2.14	2.37	2.61	2.84	3.08	3.32	3.56

1 = cooling capacity 2 = power input 3 = current 4 = condensing temperature 5 = evaporating temperature

Nota : Tecumseh se réserve le droit de modifier les informations contenues dans ce document sans préavis.

Note : Tecumseh reserves the right to change information contained in this document without notification.