

Compressor

Voltage Code : FZ

CAJ9513T-FZ

High Temp. Commercial (MHP)

220 - 240V 1~ 50 Hz

R22

AJK513T-FZ3C

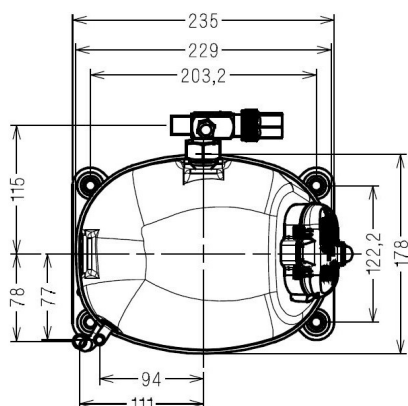
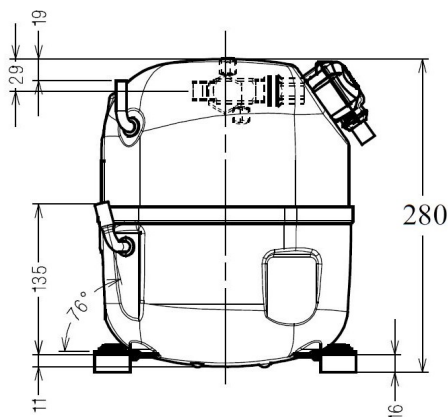
Operating conditions : **Customized... / 50 Hz / Dew**

Sound Power
ISO3745 / ISO 3743-1

Evaporating Temp. : -10.0 °C
Superheat : 10.0 K
Return gas temp. : 10.0 °C
Condensing Temp. : 45.0 °C
Subcooling : 10.0 K
Liquid : 34.7 °C

Refrig. Capacity : 1747 Watt

Power Input : 894 Watt
Amps : 4.54 A
C.O.P : 1.95 Watt/W



Displacement (cc) 24.2
Net Weight (Kg) 22.0
Oil Quantity (cc) 475.0
Oil Type Synthetic_Alkylate
Expansion Device Capillary_Tube/Expansion_Valve
Cooling Fan
Main Winding (Ohm) 1.9
Start Winding (Ohm) 6.03

Current
RLA (A) 6
MCC (A) 9.6
LRA (A) 33

Electrical Equipment CSR

Overload MST18AIW
Time Check 2.8s - 5.2s / 29 A
Open Temp 135° C
Close Temp 61° C
Optional T0610

Start Capacitor 88 µF / 330 V
Run Capacitor 15 µF / 400 V

Potential Relay RVA3AN**
Pick Up 260/289V
Drop Out 50/110V
Optional 3ARR3*10B*

Refrigerating connection for OD
Suction Tube 15.9 (5/8")
Discharge Tube 7.9 (5/16")
Process Tube 6.35 (1/4")

Certificates :



Note : Tecumseh reserves the right to change information contained in this document without notification.

CAJ9513T-FZ	Tension FZ : 220 - 240V 1~ 50 Hz
--------------------	---

Les performances sont données dans les conditions EN12900 :	Gaz aspirés :	20.0 °C
Condition Dew	Sous refroidissement :	0.0 K
The performance data are in EN12900 conditions :	Return gas :	20.0 °C
Dew Condition	Subcooling :	0.0 K

50 Hz R22										
										N°234JT-FZ

4 T condensation	5 T évaporation	(°C)	-20	-15	-10	-5	0	5	10	15
40	1 P frigorifique	(Watt)	1129	1466	1867	2340	2895	3544	4295	5159
	2 P absorbée	(W)	700	781	855	923	984	1037	1082	1119
	3 I absorbée	(A)	3.74	4.07	4.38	4.66	4.92	5.16	5.37	5.56
50	1 P frigorifique	(Watt)	920	1217	1565	1974	2453	3013	3663	4415
	2 P absorbée	(W)	731	833	929	1020	1104	1182	1253	1317
	3 I absorbée	(A)	3.83	4.27	4.69	5.09	5.46	5.81	6.13	6.44
60	1 P frigorifique	(Watt)		970	1266	1611	2014	2487	3038	3678
	2 P absorbée	(W)		872	992	1107	1217	1322	1420	1512
	3 I absorbée	(A)		4.46	4.99	5.50	5.98	6.45	6.88	7.30
