



Compressor
Voltage Code : TZ

TAG4573Z

High Temp. Commercial (HP)

400V 3~ 50Hz / 440V 3~ 60 Hz

R404A

AGB4573ZTZ

Operating conditions : **Customized... / 50 Hz / Dew**

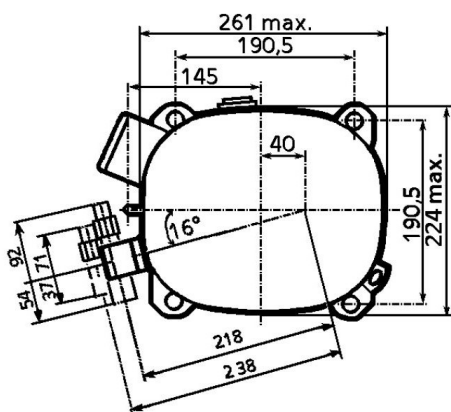
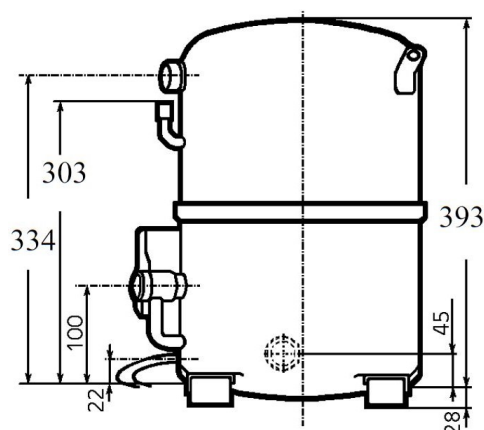
Sound Power
ISO3745 / ISO 3743-1

Evaporating Temp. : -10.0 °C
Superheat : 10.0 K
Return gas temp. : 10.0 °C
Condensing Temp. : 45.0 °C
Subcooling : 10.0 K
Liquid : 34.7 °C

Refrig. Capacity : **9220 Watt**

Power Input : 4727 Watt
Amps : 8.12 A
C.O.P : 1.95 Watt/W

81 dBA



Displacement (cc) 134.8
Net Weight (Kg) 48.0
Oil Quantity (cc) 1760.0
Oil Type Polyolester
Expansion Device Capillary_Tube/Expansion_Valve
Cooling Fan
Main Winding (Ohm) 2.2

Current
RLA (A) 11.4 | 13.2
MCC (A) 19 | 18.3
LRA (A) 56 | 61

Electrical Equipment TRI

Overload Interne

Refrigerating connection for OD

Suction Tube 28.6 (1"1/8)
Discharge Tube 15.9 (5/8")
Process Tube 6.35 (1/4")

Certificates :



Note : Tecumseh reserves the right to change information contained in this document without notification.

TAG4573Z	Tension TZ : 400V 3~ 50Hz / 440V 3~ 60 Hz
-----------------	--

Les performances sont données dans les conditions EN12900 :	Gaz aspirés : 20.0 °C
Condition Dew	Sous refroidissement : 0.0 K
The performance data are in EN12900 conditions :	Return gas : 20.0 °C
Dew Condition	Subcooling : 0.0 K

50 Hz R404A											
N°227LU-T											
4 T condensation	5 T évaporation	(°C)	-25	-20	-15	-10	-5	0	5	10	15
30	1 P frigorifique	(Watt)	5894	7716	9878	12427	15413	18882	22883	27462	32667
	2 P absorbée	(W)	3020	3477	3935	4393	4850	5306	5759	6207	6651
	3 I absorbée	(A)	5.74	6.35	6.97	7.61	8.28	8.96	9.67	10.4	11.2
40	1 P frigorifique	(Watt)	4516	6163	8071	10288	12861	15837	19265	23192	27667
	2 P absorbée	(W)	3027	3563	4104	4650	5200	5752	6306	6861	7415
	3 I absorbée	(A)	5.77	6.49	7.24	8.00	8.79	9.60	10.4	11.3	12.2
50	1 P frigorifique	(Watt)		4539	6155	8000	10122	12567	15385	18622	22327
	2 P absorbée	(W)		3512	4134	4766	5406	6053	6706	7364	8027
	3 I absorbée	(A)		6.44	7.31	8.19	9.10	10.0	11.0	12.0	13.0
60	1 P frigorifique	(Watt)			4232	5667	7299	9175	11344	13853	16750
	2 P absorbée	(W)			4010	4725	5453	6193	6943	7703	8471
	3 I absorbée	(A)			7.18	8.19	9.22	10.3	11.3	12.4	13.6

60 Hz R404A											
N°227LU-T											
4 T condensation	5 T évaporation	(°C)	-25	-20	-15	-10	-5	0	5	10	15
30	1 P frigorifique	(Watt)	7410	9574	12126	15120	18612	22657	27312	32630	38669
	2 P absorbée	(W)	3912	4504	5101	5699	6294	6882	7459	8020	8561
	3 I absorbée	(A)	6.37	7.21	8.04	8.86	9.67	10.5	11.3	12.0	12.8
40	1 P frigorifique	(Watt)	5835	7793	10035	12617	15594	19022	22956	27451	32563
	2 P absorbée	(W)	3946	4611	5295	5996	6707	7427	8149	8871	9587
	3 I absorbée	(A)	6.34	7.36	8.37	9.37	10.4	11.3	12.3	13.3	14.2
50	1 P frigorifique	(Watt)		5981	7901	10059	12508	15306	18507	22166	26339
	2 P absorbée	(W)		4659	5402	6176	6975	7797	8636	9489	10352
	3 I absorbée	(A)		7.21	8.40	9.58	10.8	11.9	13.1	14.2	15.3
60	1 P frigorifique	(Watt)			5751	7471	9380	11534	13989	16800	20022
	2 P absorbée	(W)			5493	6310	7169	8064	8991	9947	10927
	3 I absorbée	(A)			8.13	9.49	10.8	12.2	13.5	14.8	16.1

1 = cooling capacity 2 = power input 3 = current 4 = condensing temperature 5 = evaporating temperature

Nota : Tecumseh se réserve le droit de modifier les informations contenues dans ce document sans préavis.

Note : Tecumseh reserves the right to change information contained in this document without notification.