



Compressor  
Voltage Code : GZ

CAJ4519T-GZ

High Temp. Commercial (HP)

208 - 220V 1~ 50 Hz

R22

AJ4519T-GZ3C

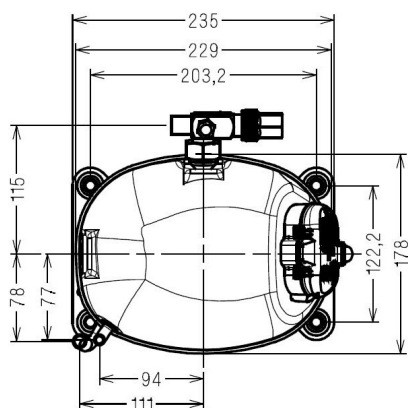
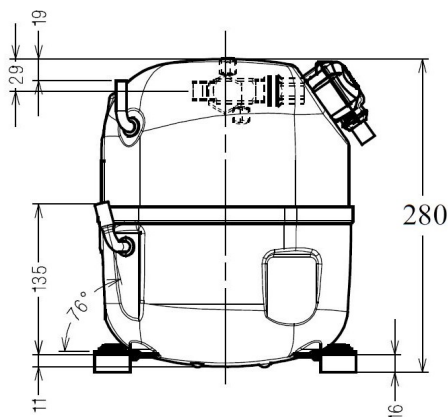
Operating conditions : **Customized... / 50 Hz / Dew**

**Sound Power**  
ISO3745 / ISO 3743-1

Evaporating Temp. : -10.0 °C  
Superheat : 10.0 K  
Return gas temp. : 10.0 °C  
Condensing Temp. : 45.0 °C  
Subcooling : 10.0 K  
Liquid : 34.7 °C

Refrig. Capacity : **2820 Watt**

Power Input : 1419 Watt  
Amps : 6.76 A  
C.O.P : 1.99 Watt/W



Displacement (cc) 34.45  
Net Weight (Kg) 22.6  
Oil Quantity (cc) 475.0  
Oil Type Mineral  
Expansion Device Capillary\_Tube/Expansion\_Valve  
Cooling Fan  
Main Winding (Ohm) 1.24  
Start Winding (Ohm) 5.3

Current  
RLA (A) 8.9  
MCC (A) 12.9  
LRA (A) 44

Electrical Equipment CSR

Overload MST00AHW  
Time Check 2.8s - 5.2s / 33.5 A  
Open Temp 135° C  
Close Temp 61° C  
Optional T0478

Start Capacitor 100 µF / 250 V  
Run Capacitor 35 µF / 400 V

Potential Relay RVA4AI\*\*  
Pick Up 204/233V  
Drop Out 60/121V

Refrigerating connection for OD  
Suction Tube 15.9 (5/8")  
Discharge Tube 9.5 (3/8")  
Process Tube 6.35 (1/4")

Certificates :



Note : Tecumseh reserves the right to change information contained in this document without notification.

## CAJ4519T-GZ

Tension GZ : 208 - 220V 1~ 50 Hz

Les performances sont données dans les **conditions EN12900** :  
Condition Dew

Gaz aspirés : 20.0 °C  
Sous refroidissement : 0.0 K

The performance data are in **EN12900 conditions** :  
Dew Condition

Return gas : 20.0 °C  
Subcooling : 0.0 K

### 50 Hz R22

**N°2517**

4   T condensation	5   T évaporation	(°C)	-20	-15	-10	-5	0	5	10	15
<b>40</b>	1   P frigorifique	(Watt)	1971	2462	3039	3700	4441	5260	6155	7121
	2   P absorbée	(W)	1228	1315	1401	1484	1566	1645	1723	1798
	3   I absorbée	(A)	5.85	6.30	6.73	7.14	7.53	7.89	8.23	8.55
<b>50</b>	1   P frigorifique	(Watt)	1535	1975	2489	3076	3731	4453	5238	6083
	2   P absorbée	(W)	1160	1303	1439	1569	1692	1807	1916	2018
	3   I absorbée	(A)	5.51	6.16	6.78	7.38	7.96	8.51	9.03	9.53
<b>60</b>	1   P frigorifique	(Watt)		1462	1923	2443	3022	3655	4339	5071
	2   P absorbée	(W)		1290	1478	1654	1818	1971	2112	2241
	3   I absorbée	(A)		6.04	6.85	7.64	8.39	9.13	9.83	10.5

© 2019 Tecumseh Products Company  
All rights reserved

1 = cooling capacity 2 = power input 3 = current 4 = condensing temperature 5 = evaporating temperature

**Nota : Tecumseh se réserve le droit de modifier les informations contenues dans ce document sans préavis.**

**Note : Tecumseh reserves the right to change information contained in this document without notification.**