



Compressor
Voltage Code : TZ

TFH4522Z

High Temp. Commercial (HP)

400V 3~ 50Hz / 440V 3~ 60 Hz

R404A

AHC4522TZ

Operating conditions : **Customized... / 50 Hz / Dew**

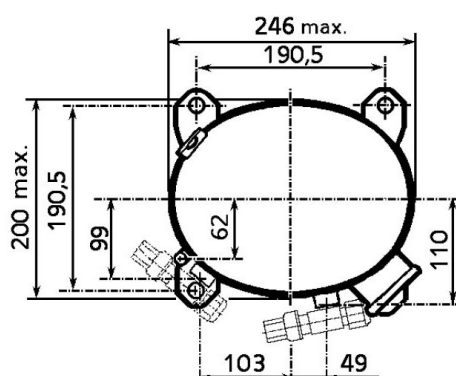
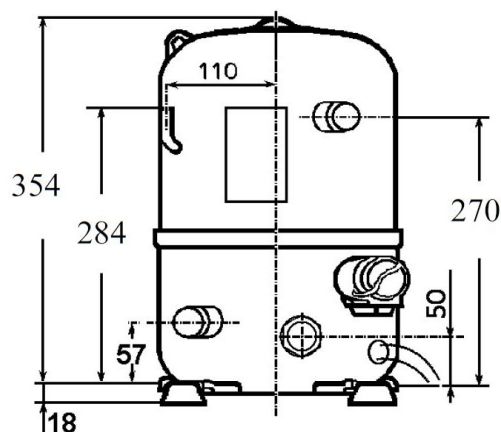
Sound Power
ISO3745 / ISO 3743-1

Evaporating Temp. : -10.0 °C
Superheat : 10.0 K
Return gas temp. : 10.0 °C
Condensing Temp. : 45.0 °C
Subcooling : 10.0 K
Liquid : 34.7 °C

Refrig. Capacity : **2635 Watt**

Power Input : 1544 Watt
Amps : 3.36 A
C.O.P : 1.71 Watt/W

72 dBA



Displacement (cc) 39.9
Net Weight (Kg) 30.0
Oil Quantity (cc) 1330.0
Oil Type Polyolester
Expansion Device Capillary_Tube/Expansion_Valve
Cooling Fan
Main Winding (Ohm) 6.3

Current
RLA (A) 3.9 | 4.1
MCC (A) 5.4 | 5.9
LRA (A) 24 | 26

Electrical Equipment TRI

Overload Interne

Refrigerating connection for OD

Suction Tube 15.9 (5/8")
Discharge Tube 12.7 (1/2")
Process Tube 6.35 (1/4")

Certificates :



Note : Tecumseh reserves the right to change information contained in this document without notification.

TFH4522Z

Tension TZ : 400V 3~ 50Hz / 440V 3~ 60 Hz

Les performances sont données dans les **conditions EN12900** :

Condition Dew

Gaz aspirés : 20.0 °C

Sous refroidissement : 0.0 K

The performance data are in **EN12900 conditions** :

Dew Condition

Return gas : 20.0 °C

Subcooling : 0.0 K

50 Hz R404A



N°226CU-T

4 T condensation	5 T évaporation	(°C)	-25	-20	-15	-10	-5	0	5	10	15
30	1 P frigorifique	(Watt)	1555	2147	2849	3677	4644	5767	7062	8542	10224
	2 P absorbée	(W)	1013	1167	1301	1418	1524	1623	1719	1816	1919
	3 I absorbée	(A)	2.75	2.91	3.06	3.19	3.31	3.41	3.50	3.57	3.62
40	1 P frigorifique	(Watt)	1093	1636	2261	2983	3817	4778	5882	7144	8579
	2 P absorbée	(W)	964	1173	1356	1516	1659	1787	1907	2022	2136
	3 I absorbée	(A)	2.70	2.93	3.14	3.33	3.51	3.67	3.82	3.95	4.06
50	1 P frigorifique	(Watt)		1097	1636	2243	2934	3724	4629	5663	6842
	2 P absorbée	(W)		1093	1338	1554	1746	1917	2074	2219	2357
	3 I absorbée	(A)		2.84	3.11	3.36	3.60	3.83	4.03	4.23	4.40
60	1 P frigorifique	(Watt)			1010	1494	2033	2643	3339	4136	5051
	2 P absorbée	(W)			1220	1505	1759	1987	2193	2381	2557
	3 I absorbée	(A)			2.98	3.30	3.60	3.89	4.15	4.41	4.64

60 Hz R404A

N°226CU-T

4 T condensation	5 T évaporation	(°C)	-25	-20	-15	-10	-5	0	5	10	15
30	1 P frigorifique	(Watt)	1786	2555	3438	4450	5606	6923	8415	10097	11985
	2 P absorbée	(W)	1143	1376	1569	1737	1889	2039	2199	2380	2594
	3 I absorbée	(A)	2.50	2.72	2.93	3.11	3.29	3.45	3.59	3.73	3.84
40	1 P frigorifique	(Watt)	1142	1863	2661	3553	4552	5676	6938	8354	9939
	2 P absorbée	(W)	995	1320	1590	1817	2013	2192	2363	2541	2737
	3 I absorbée	(A)	2.36	2.65	2.92	3.18	3.42	3.65	3.86	4.06	4.24
50	1 P frigorifique	(Watt)		1140	1859	2635	3482	4417	5454	6609	7897
	2 P absorbée	(W)		1145	1513	1822	2085	2314	2520	2717	2916
	3 I absorbée	(A)		2.50	2.84	3.17	3.48	3.77	4.06	4.32	4.58
60	1 P frigorifique	(Watt)			1043	1707	2407	3158	3974	4873	5867
	2 P absorbée	(W)			1312	1726	2077	2378	2642	2879	3104
	3 I absorbée	(A)			2.69	3.08	3.46	3.83	4.18	4.51	4.83

1 = cooling capacity 2 = power input 3 = current 4 = condensing temperature 5 = evaporating temperature

Nota : Tecumseh se réserve le droit de modifier les informations contenues dans ce document sans préavis.

Note : Tecumseh reserves the right to change information contained in this document without notification.