



Compressor
Voltage Code : TZ

TAG4581Z

High Temp. Commercial (HP)

400V 3~ 50Hz / 440V 3~ 60 Hz

R404A

AGB4581ZTZ

Operating conditions : **Customized... / 50 Hz / Dew**

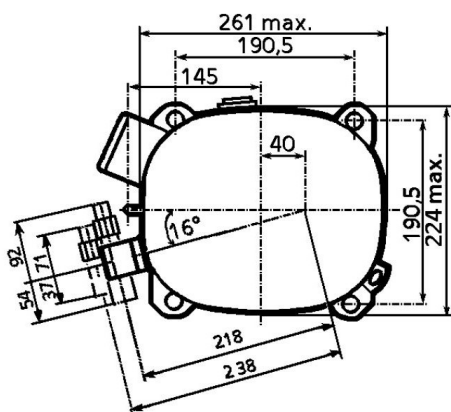
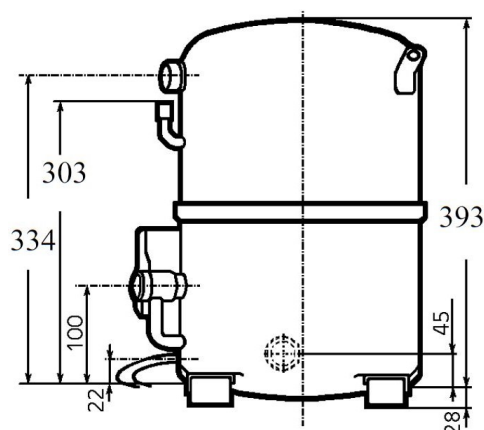
Sound Power
ISO3745 / ISO 3743-1

Evaporating Temp. : -10.0 °C
Superheat : 10.0 K
Return gas temp. : 10.0 °C
Condensing Temp. : 45.0 °C
Subcooling : 10.0 K
Liquid : 34.7 °C

Refrig. Capacity : **10195 Watt**

Power Input : 5462 Watt
Amps : 9.28 A
C.O.P : 1.87 Watt/W

84 dBA



Displacement (cc) 145.0
Net Weight (Kg) 48.1
Oil Quantity (cc) 1760.0
Oil Type Polyolester
Expansion Device Capillary_Tube/Expansion_Valve
Cooling Fan
Main Winding (Ohm) 1.63

Current
RLA (A) 12.7 | 13.9
MCC (A) 20.8 | 21.4
LRA (A) 83 | 85

Electrical Equipment TRI

Overload Interne

Refrigerating connection for OD

Suction Tube 28.6 (1"1/8)
Discharge Tube 15.9 (5/8")
Process Tube 6.35 (1/4")

Certificates :



Note : Tecumseh reserves the right to change information contained in this document without notification.

| | |
|-----------------|--|
| TAG4581Z | Tension TZ : 400V 3~ 50Hz / 440V 3~ 60 Hz |
|-----------------|--|

| | |
|--|------------------------------|
| Les performances sont données dans les conditions EN12900 : | Gaz aspirés : 20.0 °C |
| Condition Dew | Sous refroidissement : 0.0 K |
| The performance data are in EN12900 conditions : | Return gas : 20.0 °C |
| Dew Condition | Subcooling : 0.0 K |

| 50 Hz R404A | | | | | | | | | | | |
|--------------------|--------------------|--------|------|------|-------|-------|-------|-------|-------|-------|-------|
| N°227MU-T | | | | | | | | | | | |
| 4 T condensation | 5 T évaporation | (°C) | -25 | -20 | -15 | -10 | -5 | 0 | 5 | 10 | 15 |
| 30 | 1 P frigorifique | (Watt) | 6540 | 8504 | 10797 | 13470 | 16568 | 20141 | 24237 | 28904 | 34190 |
| | 2 P absorbée | (W) | 3573 | 4078 | 4549 | 5003 | 5454 | 5919 | 6413 | 6954 | 7556 |
| | 3 I absorbée | (A) | 7.16 | 7.65 | 8.17 | 8.72 | 9.30 | 9.91 | 10.5 | 11.2 | 11.9 |
| 40 | 1 P frigorifique | (Watt) | 5068 | 6881 | 8931 | 11267 | 13937 | 16989 | 20471 | 24431 | 28918 |
| | 2 P absorbée | (W) | 3539 | 4186 | 4779 | 5334 | 5867 | 6393 | 6929 | 7491 | 8094 |
| | 3 I absorbée | (A) | 7.18 | 7.80 | 8.44 | 9.11 | 9.82 | 10.5 | 11.3 | 12.1 | 12.9 |
| 50 | 1 P frigorifique | (Watt) | | 5169 | 6966 | 8957 | 11189 | 13710 | 16569 | 19814 | 23492 |
| | 2 P absorbée | (W) | | 4118 | 4867 | 5558 | 6206 | 6828 | 7439 | 8056 | 8694 |
| | 3 I absorbée | (A) | | 7.86 | 8.63 | 9.42 | 10.2 | 11.1 | 12.0 | 12.9 | 13.8 |
| 60 | 1 P frigorifique | (Watt) | | | 4920 | 6557 | 8341 | 10323 | 12549 | 15069 | 17929 |
| | 2 P absorbée | (W) | | | 4771 | 5631 | 6429 | 7181 | 7901 | 8607 | 9314 |
| | 3 I absorbée | (A) | | | 8.73 | 9.65 | 10.6 | 11.6 | 12.6 | 13.6 | 14.7 |

| 60 Hz R404A | | | | | | | | | | | |
|--------------------|--------------------|--------|------|-------|-------|-------|-------|-------|-------|-------|-------|
| N°227MU-T | | | | | | | | | | | |
| 4 T condensation | 5 T évaporation | (°C) | -25 | -20 | -15 | -10 | -5 | 0 | 5 | 10 | 15 |
| 30 | 1 P frigorifique | (Watt) | 7739 | 10013 | 12607 | 15580 | 18990 | 22897 | 27360 | 32438 | 38189 |
| | 2 P absorbée | (W) | 4335 | 4964 | 5575 | 6193 | 6843 | 7549 | 8335 | 9227 | 10250 |
| | 3 I absorbée | (A) | 6.89 | 7.62 | 8.38 | 9.17 | 9.99 | 10.8 | 11.7 | 12.6 | 13.6 |
| 40 | 1 P frigorifique | (Watt) | 6091 | 8245 | 10625 | 13290 | 16299 | 19712 | 23586 | 27981 | 32957 |
| | 2 P absorbée | (W) | 4341 | 5130 | 5869 | 6581 | 7293 | 8028 | 8810 | 9666 | 10618 |
| | 3 I absorbée | (A) | 6.94 | 7.79 | 8.68 | 9.59 | 10.5 | 11.5 | 12.5 | 13.5 | 14.6 |
| 50 | 1 P frigorifique | (Watt) | | 6315 | 8435 | 10747 | 13308 | 16180 | 19419 | 23086 | 27239 |
| | 2 P absorbée | (W) | | 5073 | 6004 | 6876 | 7714 | 8542 | 9386 | 10268 | 11215 |
| | 3 I absorbée | (A) | | 7.89 | 8.90 | 9.94 | 11.0 | 12.1 | 13.2 | 14.4 | 15.6 |
| 60 | 1 P frigorifique | (Watt) | | | 6126 | 8037 | 10105 | 12388 | 14947 | 17838 | 21123 |
| | 2 P absorbée | (W) | | | 5864 | 6960 | 7989 | 8975 | 9943 | 10918 | 11923 |
| | 3 I absorbée | (A) | | | 9.05 | 10.2 | 11.4 | 12.6 | 13.9 | 15.2 | 16.5 |

1 = cooling capacity 2 = power input 3 = current 4 = condensing temperature 5 = evaporating temperature

Nota : Tecumseh se réserve le droit de modifier les informations contenues dans ce document sans préavis.

Note : Tecumseh reserves the right to change information contained in this document without notification.