



Compressor  
Voltage Code : TZ

TFH2480Z

Low Temp. Commercial (BP)

400V 3~ 50Hz / 440V 3~ 60 Hz

R404A

AHC2466ZTZ

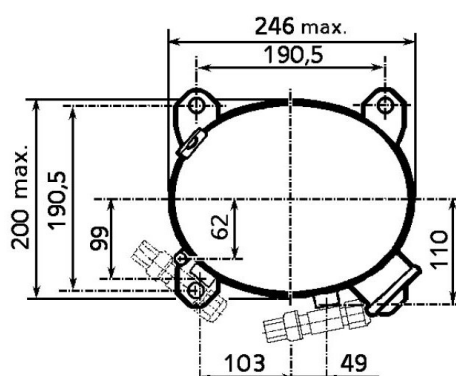
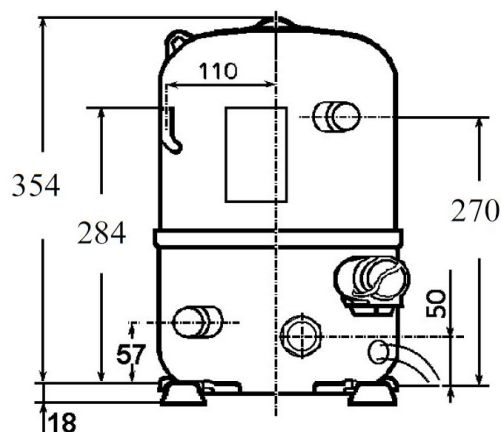
Operating conditions : **Customized... / 50 Hz / Dew**

**Sound Power**  
ISO3745 / ISO 3743-1

Evaporating Temp. : -23.3 °C  
Superheat : 10.0 K  
Return gas temp. : 3.00 °C  
Condensing Temp. : 45.0 °C  
Subcooling : 10.0 K  
Liquid : 34.7 °C

Refrig. Capacity : **1899 Watt**  
  
Power Input : 1671 Watt  
Amps : 3.02 A  
C.O.P : 1.14 Watt/W

72 dBA



Displacement (cc) 53.2  
Net Weight (Kg) 32.9  
Oil Quantity (cc) 1330.0  
Oil Type Polyolester  
Expansion Device Capillary\_Tube/Expansion\_Valve  
Cooling Fan  
Main Winding (Ohm) 6.0

Current  
RLA (A) 2.8 | 3  
MCC (A) 6.3 | 6.4  
LRA (A) 23 | 25

Electrical Equipment TRI

Overload Interne

**Refrigerating connection for OD**

Suction Tube 15.9 (5/8")  
Discharge Tube 12.7 (1/2")  
Process Tube 6.35 (1/4")

Certificates :



Note : Tecumseh reserves the right to change information contained in this document without notification.

<b>TFH2480Z</b>	<b>Tension TZ : 400V 3~ 50Hz / 440V 3~ 60 Hz</b>
-----------------	--

Les performances sont données dans les <b>conditions EN12900</b> :	Gaz aspirés : 20.0 °C
Condition Dew	Sous refroidissement : 0.0 K
The performance data are in <b>EN12900 conditions</b> :	Return gas : 20.0 °C
Dew Condition	Subcooling : 0.0 K

<b>50 Hz R404A</b>									
<b>N°126GU-T</b>									
4   T condensation	5   T évaporation	(°C)	<b>-40</b>	<b>-35</b>	<b>-30</b>	<b>-25</b>	<b>-20</b>	<b>-15</b>	<b>-10</b>
<b>30</b>	1   P frigorifique	(Watt)	1054	1502	2017	2606	3275	4028	4871
	2   P absorbée	(W)	948	1163	1374	1581	1787	1994	2202
	3   I absorbée	(A)	2.10	2.33	2.57	2.83	3.12	3.42	3.73
<b>40</b>	1   P frigorifique	(Watt)	719	1125	1587	2111	2701	3364	4105
	2   P absorbée	(W)	850	1102	1345	1582	1814	2043	2270
	3   I absorbée	(A)	2.01	2.28	2.58	2.89	3.22	3.58	3.94
<b>50</b>	1   P frigorifique	(Watt)		757	1165	1622	2134	2706	3344
	2   P absorbée	(W)		1002	1297	1583	1860	2130	2395
	3   I absorbée	(A)		2.17	2.52	2.88	3.27	3.67	4.09
<b>60</b>	1   P frigorifique	(Watt)			757	1147	1580	2061	2596
	2   P absorbée	(W)			1188	1541	1883	2214	2537
	3   I absorbée	(A)			2.40	2.81	3.25	3.70	4.17

<b>60 Hz R404A</b>									
<b>N°126GU-T</b>									
4   T condensation	5   T évaporation	(°C)	<b>-40</b>	<b>-35</b>	<b>-30</b>	<b>-25</b>	<b>-20</b>	<b>-15</b>	<b>-10</b>
<b>30</b>	1   P frigorifique	(Watt)	1207	1729	2326	3008	3782	4657	5639
	2   P absorbée	(W)	1123	1387	1643	1899	2162	2443	2747
	3   I absorbée	(A)	2.12	2.41	2.72	3.07	3.45	3.85	4.28
<b>40</b>	1   P frigorifique	(Watt)	814	1293	1832	2439	3121	3887	4746
	2   P absorbée	(W)	992	1314	1620	1919	2219	2529	2857
	3   I absorbée	(A)	2.00	2.34	2.71	3.11	3.53	3.99	4.48
<b>50</b>	1   P frigorifique	(Watt)		859	1338	1870	2461	3119	3854
	2   P absorbée	(W)		1169	1543	1904	2259	2616	2984
	3   I absorbée	(A)		2.17	2.60	3.05	3.53	4.04	4.57
<b>60</b>	1   P frigorifique	(Watt)			855	1311	1811	2362	2973
	2   P absorbée	(W)			1378	1818	2245	2667	3093
	3   I absorbée	(A)			2.39	2.89	3.42	3.98	4.57

1 = cooling capacity 2 = power input 3 = current 4 = condensing temperature 5 = evaporating temperature

**Nota : Tecumseh se réserve le droit de modifier les informations contenues dans ce document sans préavis.**

**Note : Tecumseh reserves the right to change information contained in this document without notification.**