



Compressor
Voltage Code : FZ

AE4450Z-FZ1A

High Temp. Commercial (HP)

220 - 240V 1~ 50 Hz

R404A

AE4450Z-FZ1A_BR

Operating conditions : **Customized... / 50 Hz / Dew**

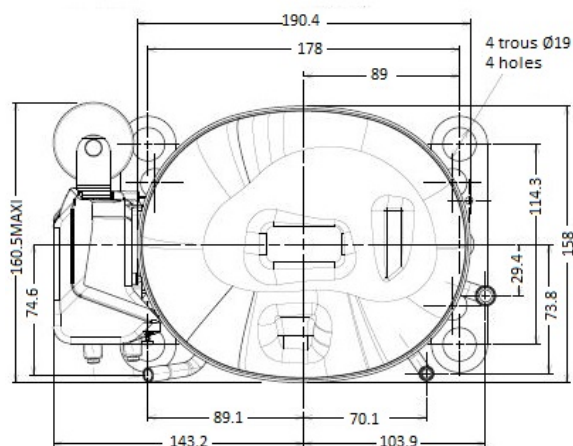
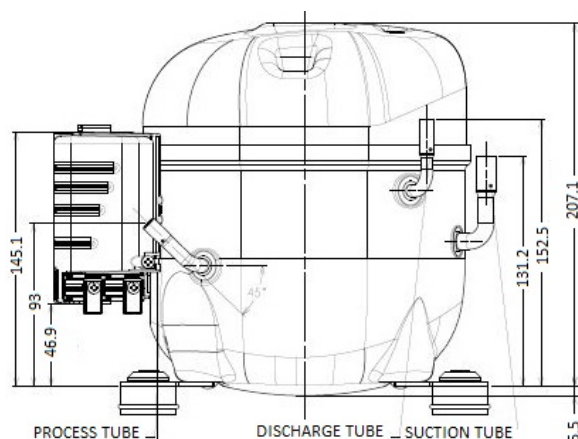
Sound Power
ISO3745 / ISO 3743-1

Evaporating Temp. : -10.0 °C
Superheat : 10.0 K
Return gas temp. : 10.0 °C
Condensing Temp. : 45.0 °C
Subcooling : 10.0 K
Liquid : 34.7 °C

Refrig. Capacity : 725 Watt

Power Input : 445 Watt
Amps : 2.78 A
C.O.P : 1.63 Watt/W

59 dBA



Displacement (cc) 8.85
Net Weight (Kg) 10.7
Oil Quantity (cc) 380.0
Oil Type Polyolester
Expansion Device Capillary_Tube/Expansion_Valve
Cooling Fan
Main Winding (Ohm) 5.74
Start Winding (Ohm) 25.41

Current
RLA (A) 3.52
LRA (A) 17.5

Electrical Equipment CSIR

Overload T1419
Time Check 6.5s - 16s / 10.7 A
Open Temp 140° C
Close Temp 52° C

Start Capacitor 88 µF / 250 V

Current Relay RP49**
Pick Up 8.20A
Drop Out 7.00A

Refrigerating connection for OD
Suction Tube 9.5 (3/8")
Discharge Tube 6.35 (1/4")
Process Tube 6.35 (1/4")

Certificates :



Note : Tecumseh reserves the right to change information contained in this document without notification.

AE4450Z-FZ1A	Tension FZ : 220 - 240V 1~ 50 Hz
---------------------	---

Les performances sont données dans les conditions EN12900 :	Gaz aspirés : 20.0 °C
Condition Dew	Sous refroidissement : 0.0 K
The performance data are in EN12900 conditions :	Return gas : 20.0 °C
Dew Condition	Subcooling : 0.0 K

50 Hz R404A											
N°3093											
4 T condensation	5 T évaporation	(°C)	-25	-20	-15	-10	-5	0	5	10	15
30	1 P frigorifique	(Watt)	472	605	762	946	1160	1409	1694	2021	2391
	2 P absorbée	(W)	300	333	361	384	402	417	428	436	441
	3 I absorbée	(A)	2.35	2.44	2.52	2.59	2.65	2.70	2.74	2.77	2.78
40	1 P frigorifique	(Watt)	380	501	639	797	978	1187	1425	1697	2006
	2 P absorbée	(W)	309	354	393	426	456	480	501	518	532
	3 I absorbée	(A)	2.32	2.47	2.60	2.72	2.83	2.93	3.01	3.09	3.15
50	1 P frigorifique	(Watt)		391	510	642	791	959	1151	1369	1617
	2 P absorbée	(W)		365	417	463	504	541	573	601	626
	3 I absorbée	(A)		2.49	2.67	2.84	3.00	3.15	3.28	3.41	3.52
60	1 P frigorifique	(Watt)			375	481	597	725	870	1035	1222
	2 P absorbée	(W)			436	497	552	602	647	688	725
	3 I absorbée	(A)			2.75	2.97	3.18	3.37	3.56	3.73	3.89

1 = cooling capacity 2 = power input 3 = current 4 = condensing temperature 5 = evaporating temperature

Nota : Tecumseh se réserve le droit de modifier les informations contenues dans ce document sans préavis.

Note : Tecumseh reserves the right to change information contained in this document without notification.