

Model: A1.5-7Y

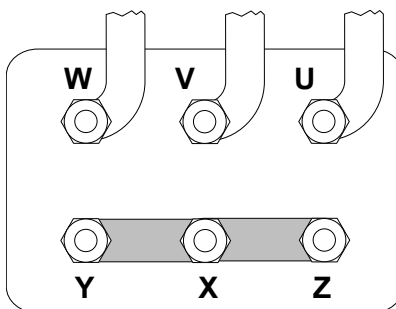
Refrigerant: R404A

Power supply: 400/3/50 DOL-STAR

Technical data:

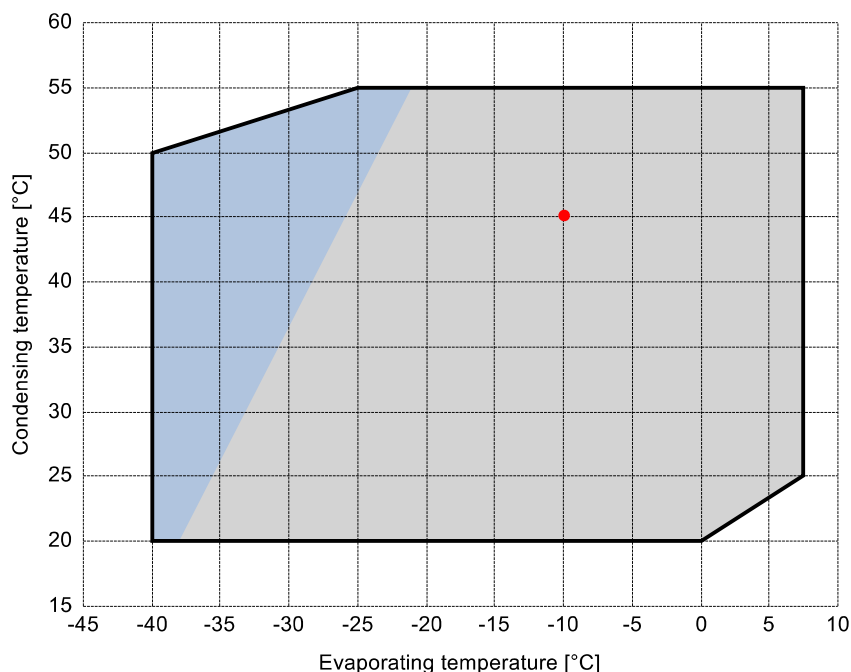
Displacement	6.91 m³/h
Nominal compressor speed	1450 rpm
Motor voltage	400 V
Nominal operating frequency	50 Hz
maximum allowed operating current (MRA)	4.5 A
locked rotor current (LRA)	20.6 A
Number of pistons	2
Net weight	36 kg
Lubricant	FRASCOLD POE32
Oil charge	1 l

Motor connections:



Application range:

Additional cooling required



Reference conditions according to EN12900

- Suction gas temperature = 20 °C
- Liquid subcooling = 0 K
- 100% of the capacity

Certified by:

- Frascold tentative data

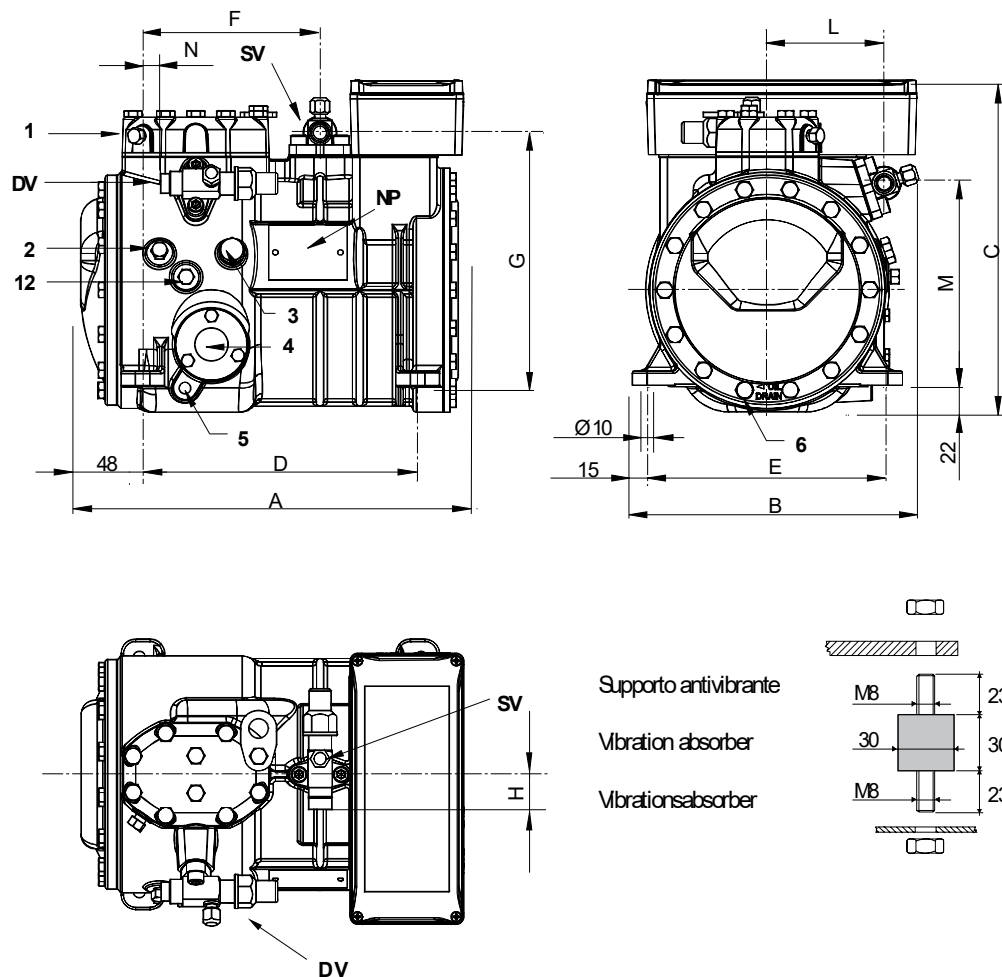
All data subject to change without notice

Model: A1.5-7Y

Refrigerant: R404A

Power supply: 400/3/50 DOL-STAR

Dimensions:



Legend:

SV: Suction Valve	5/8" in - 16 mm	M: Discharge valve	167 mm
DV: Discharge valve	1/2" in - 12.7 mm	N: Discharge valve	18 mm
A: Length	317 mm	1: High pressure connection	1/8" NPT
B: Width	237 mm	2: Low pressure connection	1/8" NPT
C: Height	275 mm	3: Oil charge plug	1/4" GAS
D: Base mounting	234 mm	4: Oil level sight glass	-
E: Base mounting	194 mm	5: Crankcase heater seat	-
F: Suction Valve	150 mm	6: Oil drain plug	M8 x 22
G: Suction Valve	209 mm	12: Oil return plug	1/8" NPT
H: Suction Valve	29 mm	NP: Nameplate	
L: Discharge valve	97 mm		

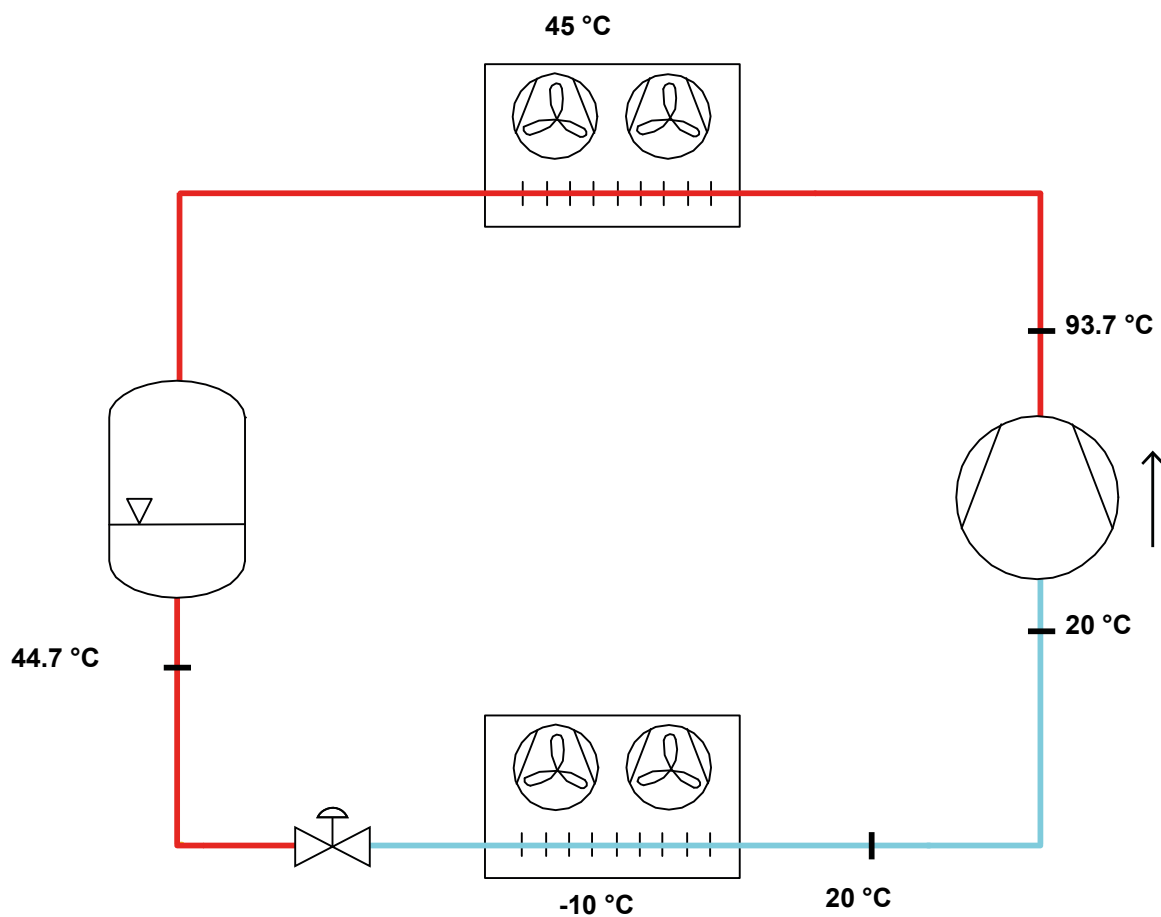
All data subject to change without notice

Model: A1.5-7Y

Refrigerant: R404A

Power supply: 400/3/50 DOL-STAR

P&I Diagram:



Model: A1.5-7Y

Refrigerant: R404A

Power supply: 400/3/50 DOL-STAR

Performance data:

Operating mode	Subcritical, 100 % of the capacity
Liquid subcooling	0 K
Suction gas temperature	20 °C
Useful fraction of superheating	100 %
Frequency	50 Hz
Additional cooling required	

Refrigerating capacity [kW]

T.Evap	-40 °C	-35 °C	-30 °C	-25 °C	-20 °C	-15 °C	-10 °C	-5 °C	0 °C	5 °C	7.5 °C
T.Cond											
55 °C	-	-	-	1.187	1.58	2.053	2.619	3.287	4.07	4.977	5.482
50 °C	0.504	0.742	1.036	1.397	1.836	2.363	2.991	3.73	4.592	5.587	6.138
45 °C	0.605	0.867	1.192	1.593	2.079	2.664	3.356	4.169	5.112	6.197	6.797
40 °C	0.693	0.98	1.339	1.782	2.32	2.963	3.723	4.611	5.638	6.816	7.465
35 °C	0.776	1.091	1.487	1.974	2.564	3.269	4.099	5.065	6.179	7.452	8.151
30 °C	0.862	1.208	1.642	2.177	2.823	3.591	4.493	5.54	6.743	8.113	8.864
25 °C	0.96	1.338	1.814	2.398	3.102	3.937	4.914	6.044	7.339	8.808	9.613
20 °C	1.078	1.492	2.011	2.648	3.412	4.316	5.37	6.586	7.974	-	-

Power input [W]

T.Evap	-40 °C	-35 °C	-30 °C	-25 °C	-20 °C	-15 °C	-10 °C	-5 °C	0 °C	5 °C	7.5 °C
T.Cond											
55 °C	-	-	-	1150	1313	1480	1648	1813	1971	2117	2185
50 °C	728	851	989	1136	1290	1446	1599	1747	1886	2010	2066
45 °C	727	848	980	1120	1263	1406	1544	1674	1792	1893	1936
40 °C	726	843	969	1100	1232	1360	1482	1593	1689	1766	1796
35 °C	724	836	955	1076	1195	1308	1413	1503	1576	1628	1644
30 °C	721	827	937	1046	1152	1249	1335	1404	1453	1478	1480
25 °C	715	814	914	1012	1103	1182	1248	1294	1318	1316	1303
20 °C	707	797	887	971	1046	1107	1151	1174	1172	-	-

COP/EER [W/W]

T.Evap	-40 °C	-35 °C	-30 °C	-25 °C	-20 °C	-15 °C	-10 °C	-5 °C	0 °C	5 °C	7.5 °C
T.Cond											
55 °C	-	-	-	1.03	1.2	1.39	1.59	1.81	2.06	2.35	2.51
50 °C	0.69	0.87	1.05	1.23	1.42	1.63	1.87	2.13	2.44	2.78	2.97
45 °C	0.83	1.02	1.22	1.42	1.65	1.89	2.17	2.49	2.85	3.27	3.51
40 °C	0.95	1.16	1.38	1.62	1.88	2.18	2.51	2.89	3.34	3.86	4.16
35 °C	1.07	1.3	1.56	1.84	2.15	2.5	2.9	3.37	3.92	4.58	4.96
30 °C	1.2	1.46	1.75	2.08	2.45	2.87	3.37	3.95	4.64	5.49	5.99
25 °C	1.34	1.64	1.98	2.37	2.81	3.33	3.94	4.67	5.57	6.7	7.38
20 °C	1.53	1.87	2.27	2.73	3.26	3.9	4.66	5.61	6.8	-	-

Current [A]

T.Evap	-40 °C	-35 °C	-30 °C	-25 °C	-20 °C	-15 °C	-10 °C	-5 °C	0 °C	5 °C	7.5 °C
T.Cond											
55 °C	-	-	-	3.03	3.17	3.33	3.52	3.71	3.9	4.08	4.16
50 °C	2.79	2.84	2.92	3.02	3.15	3.3	3.46	3.63	3.8	3.95	4.01
45 °C	2.79	2.84	2.91	3.01	3.12	3.26	3.4	3.55	3.68	3.8	3.86
40 °C	2.79	2.84	2.9	2.99	3.1	3.21	3.34	3.46	3.56	3.65	3.69
35 °C	2.79	2.83	2.9	2.97	3.07	3.16	3.26	3.36	3.44	3.49	3.51
30 °C	2.79	2.83	2.89	2.95	3.03	3.11	3.19	3.26	3.31	3.33	3.33
25 °C	2.79	2.82	2.87	2.93	2.99	3.06	3.11	3.15	3.17	3.17	3.16
20 °C	2.78	2.82	2.86	2.91	2.95	3	3.03	3.05	3.05	-	-

All data subject to change without notice

Model: A1.5-7Y

Refrigerant: R404A

Power supply: 400/3/50 DOL-STAR

Performance data:

Operating mode	Subcritical, 100 % of the capacity
Liquid subcooling	0 K
Suction gas temperature	20 °C
Useful fraction of superheating	100 %
Frequency	50 Hz
Additional cooling required	

Mass flow [kg/h]	T.Evap	-40 °C	-35 °C	-30 °C	-25 °C	-20 °C	-15 °C	-10 °C	-5 °C	0 °C	5 °C	7.5 °C
T.Cond												
55 °C	-	-	-	41	55	72	93	118	149	185	207	
50 °C	16	23	32	44	58	76	97	122	153	190	210	
45 °C	17	25	35	47	61	79	101	126	157	194	215	
40 °C	19	27	36	49	64	82	104	131	162	199	220	
35 °C	20	28	38	51	66	85	108	135	166	204	225	
30 °C	21	29	40	53	69	89	112	139	171	209	230	
25 °C	22	31	42	55	72	92	116	144	177	215	237	
20 °C	24	33	44	58	76	96	121	149	183	-	-	