

Compressor

Voltage Code : FZ

CAJ9480T-FZ

High Temp. Commercial (MHP)

220 - 240V 1~ 50 Hz

R22

AJK480T-FZ3B

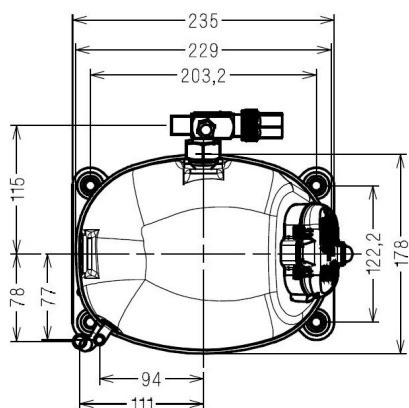
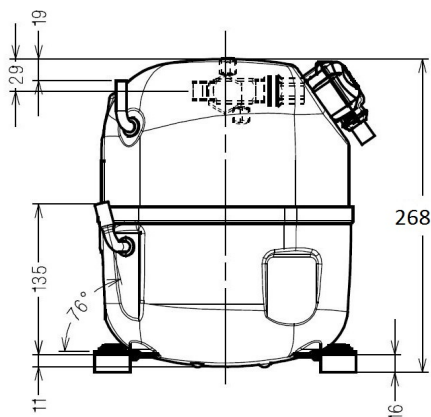
Operating conditions : **Customized... / 50 Hz / Dew**

Sound Power
ISO3745 / ISO 3743-1

Evaporating Temp. : -10.0 °C
Superheat : 10.0 K
Return gas temp. : 10.0 °C
Condensing Temp. : 45.0 °C
Subcooling : 10.0 K
Liquid : 34.7 °C

Refrig. Capacity : **1081 Watt**

Power Input : 616 Watt
Amps : 2.97 A
C.O.P : 1.75 Watt/W



Displacement (cc)	15.2
Net Weight (Kg)	19.1
Oil Quantity (cc)	475.0
Oil Type	Synthetic_Alkylate
Expansion Device	Capillary_Tube/Expansion_Valve
Cooling	Fan
Main Winding (Ohm)	3.8
Start Winding (Ohm)	12.5

Current	
RLA (A)	3.9
MCC (A)	5.3
LRA (A)	24.1

Electrical Equipment	CSR
-----------------------------	-----

Overload	MST22ALK
Time Check	7.5s - 14s / 15.3 A
Open Temp	105° C
Close Temp	61° C
Optional	T0155

Start Capacitor	88 µF / 250 V
Run Capacitor	15 µF / 400 V

Potential Relay	RVA4I**
Pick Up	204/233V
Drop Out	50/110V
Optional	3ARR3*6AU*

Refrigerating connection for OD	
Suction Tube	12.7 (1/2")
Discharge Tube	7.9 (5/16")
Process Tube	6.35 (1/4")

Certificates :



Note : Tecumseh reserves the right to change information contained in this document without notification.



Tecumseh

CAJ9480T-FZ

Tension FZ : 220 - 240V 1~ 50 Hz

Les performances sont données dans les **conditions EN12900** :
Condition Dew

Gaz aspirés : 20.0 °C
Sous refroidissement : 0.0 K

The performance data are in **EN12900 conditions** :
Dew Condition

Return gas : 20.0 °C
Subcooling : 0.0 K

50 Hz R22

N°234CT-FZ

4 T condensation	5 T évaporation	(°C)	-20	-15	-10	-5	0	5	10	15
40	1 P frigorifique	(Watt)	711	913	1154	1440	1779	2179	2646	3188
	2 P absorbée	(W)	497	547	592	633	668	698	724	745
	3 I absorbée	(A)	2.44	2.66	2.87	3.05	3.21	3.35	3.46	3.55
50	1 P frigorifique	(Watt)	582	762	971	1218	1510	1854	2257	2727
	2 P absorbée	(W)	509	576	637	694	745	791	832	868
	3 I absorbée	(A)	2.47	2.77	3.06	3.31	3.55	3.76	3.95	4.12
60	1 P frigorifique	(Watt)		610	791	1001	1248	1539	1881	2281
	2 P absorbée	(W)		588	669	744	814	879	938	992
	3 I absorbée	(A)		2.85	3.21	3.55	3.86	4.14	4.41	4.65

© 2019 Tecumseh Products Company
All rights reserved

1 = cooling capacity 2 = power input 3 = current 4 = condensing temperature 5 = evaporating temperature

Nota : Tecumseh se réserve le droit de modifier les informations contenues dans ce document sans préavis.

Note : Tecumseh reserves the right to change information contained in this document without notification.