

Model: D3-13.1Y

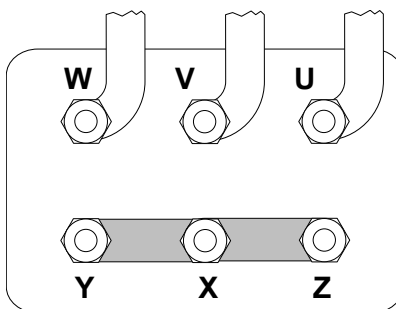
Refrigerant: R404A

Power supply: 400/3/50 DOL-STAR

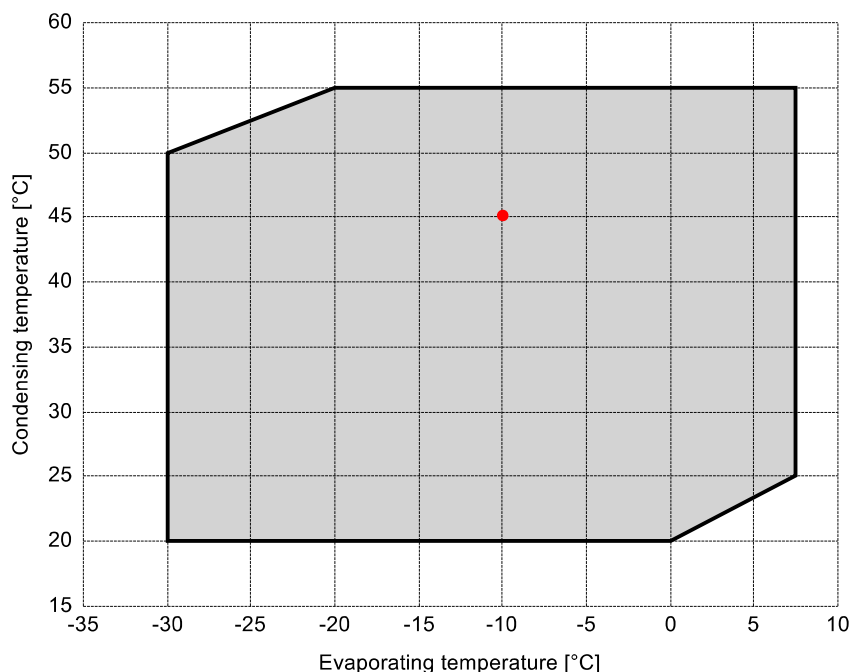
Technical data:

Displacement	13.15 m³/h
Nominal compressor speed	1450 rpm
Motor voltage	400 V
Nominal operating frequency	50 Hz
maximum allowed operating current (MRA)	8.8 A
locked rotor current (LRA)	43.7 A
Number of pistons	2
Net weight	49 kg
Lubricant	FRASCOLD POE32
Oil charge	1.2 l

Motor connections:



Application range:



Reference conditions according to EN12900

- Suction gas temperature = 20 °C
- Liquid subcooling = 0 K
- 100% of the capacity

Certified by:

- ASERCOM (ref. EN12900, 50 Hz, 100% cap.)

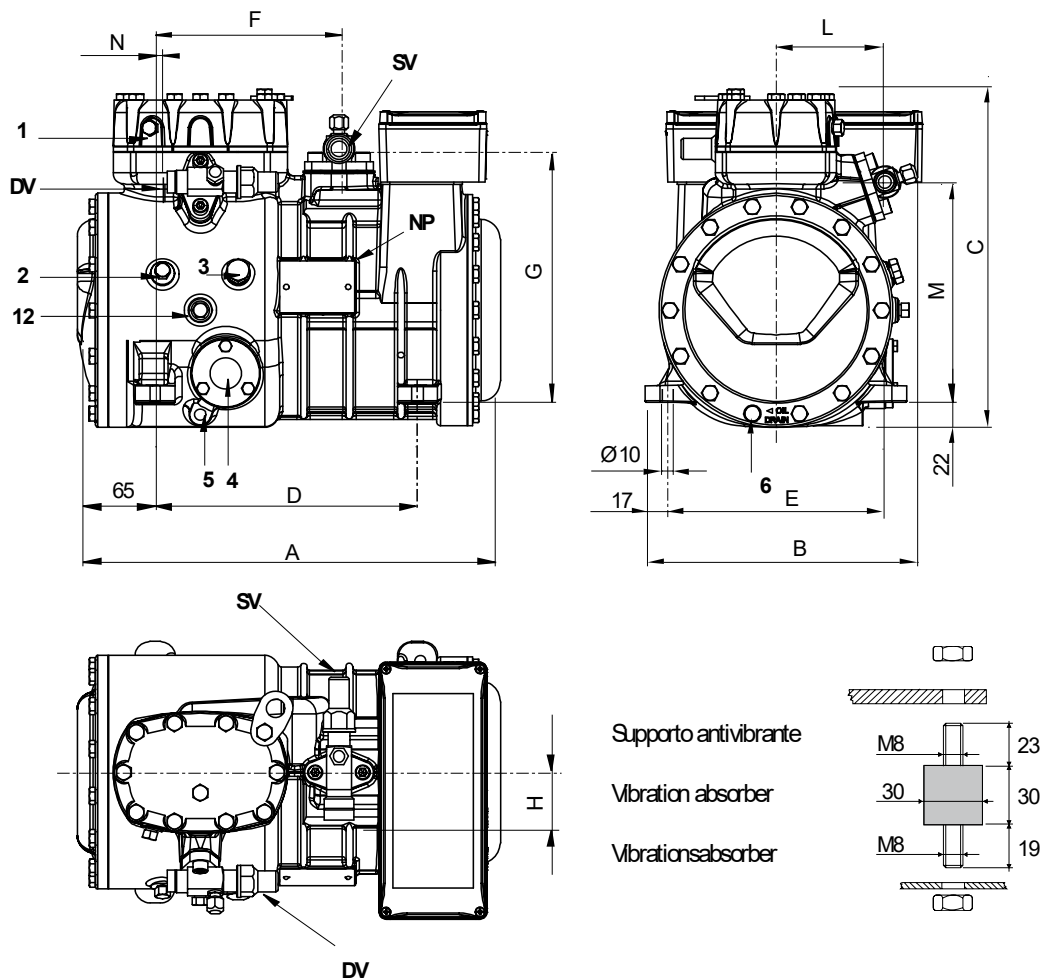
All data subject to change without notice

Model: D3-13.1Y

Refrigerant: R404A

Power supply: 400/3/50 DOL-STAR

Dimensions:



Legend:

SV: Suction Valve	1 1/8" in - 28.575 mm	M: Discharge valve	192 mm
DV: Discharge valve	5/8" in - 16 mm	N: Discharge valve	13 mm
A: Length	374 mm	1: High pressure connection	1/8" NPT
B: Width	242 mm	2: Low pressure connection	1/8" NPT
C: Height	317 mm	3: Oil charge plug	1/4" GAS
D: Base mounting	234 mm	4: Oil level sight glass	-
E: Base mounting	194 mm	5: Crankcase heater seat	-
F: Suction Valve	165 mm	6: Oil drain plug	M8 x 22
G: Suction Valve	225 mm	12: Oil return plug	1/8" NPT
H: Suction Valve	53 mm	NP: Nameplate	
I: Discharge valve	94 mm		

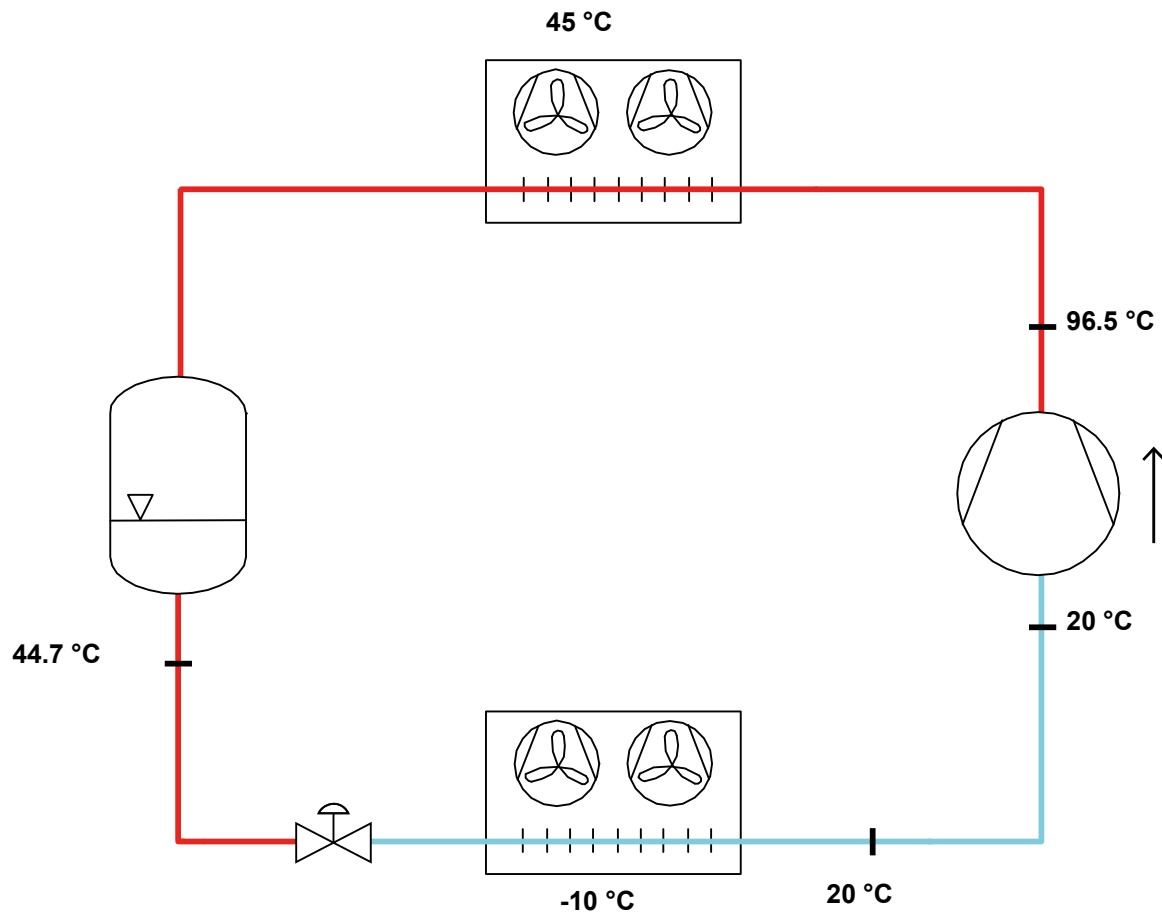
All data subject to change without notice

Model: D3-13.1Y

Refrigerant: R404A

Power supply: 400/3/50 DOL-STAR

P&I Diagram:



Model: D3-13.1Y

Refrigerant: R404A

Power supply: 400/3/50 DOL-STAR

Performance data:

Operating mode	Subcritical, 100 % of the capacity
Liquid subcooling	0 K
Suction gas temperature	20 °C
Useful fraction of superheating	100 %
Frequency	50 Hz
Additional cooling required	

Refrigerating capacity [kW]

T.Evap	-30 °C	-25 °C	-20 °C	-15 °C	-10 °C	-5 °C	0 °C	5 °C	7.5 °C
T.Cond									
55 °C	-	-	3.32	4.205	5.217	6.381	7.723	9.267	10.123
50 °C	2.088	2.854	3.718	4.706	5.843	7.152	8.66	10.39	11.346
45 °C	2.354	3.184	4.132	5.225	6.487	7.943	9.618	11.535	12.593
40 °C	2.636	3.53	4.564	5.764	7.152	8.756	10.598	12.705	13.865
35 °C	2.936	3.896	5.017	6.323	7.84	9.592	11.604	13.901	15.163
30 °C	3.255	4.282	5.491	6.906	8.552	10.454	12.636	15.124	16.49
25 °C	3.595	4.691	5.989	7.513	9.29	11.343	13.697	16.378	17.848
20 °C	3.958	5.123	6.512	8.148	10.056	12.261	14.789	-	-

Power input [W]

T.Evap	-30 °C	-25 °C	-20 °C	-15 °C	-10 °C	-5 °C	0 °C	5 °C	7.5 °C
T.Cond									
55 °C	-	-	2849	3177	3506	3828	4132	4411	4539
50 °C	2124	2415	2718	3025	3325	3612	3875	4107	4209
45 °C	2045	2323	2608	2889	3158	3407	3627	3808	3882
40 °C	1984	2248	2510	2763	2998	3207	3379	3508	3553
35 °C	1937	2182	2420	2642	2840	3004	3127	3199	3214
30 °C	1897	2120	2330	2518	2675	2794	2864	2877	2860
25 °C	1856	2055	2235	2386	2500	2568	2583	2534	2484
20 °C	1810	1981	2127	2238	2307	2323	2278	-	-

COP/EER [W/W]

T.Evap	-30 °C	-25 °C	-20 °C	-15 °C	-10 °C	-5 °C	0 °C	5 °C	7.5 °C
T.Cond									
55 °C	-	-	1.17	1.32	1.49	1.67	1.87	2.1	2.23
50 °C	0.98	1.18	1.37	1.56	1.76	1.98	2.23	2.53	2.7
45 °C	1.15	1.37	1.58	1.81	2.05	2.33	2.65	3.03	3.24
40 °C	1.33	1.57	1.82	2.09	2.39	2.73	3.14	3.62	3.9
35 °C	1.52	1.79	2.07	2.39	2.76	3.19	3.71	4.34	4.72
30 °C	1.72	2.02	2.36	2.74	3.2	3.74	4.41	5.26	5.77
25 °C	1.94	2.28	2.68	3.15	3.72	4.42	5.3	6.46	7.19
20 °C	2.19	2.59	3.06	3.64	4.36	5.28	6.49	-	-

Current [A]

T.Evap	-30 °C	-25 °C	-20 °C	-15 °C	-10 °C	-5 °C	0 °C	5 °C	7.5 °C
T.Cond									
55 °C	-	-	6.38	6.72	7.1	7.48	7.86	8.23	8.39
50 °C	5.73	5.97	6.25	6.56	6.89	7.22	7.54	7.83	7.96
45 °C	5.67	5.89	6.15	6.42	6.7	6.98	7.24	7.46	7.55
40 °C	5.63	5.83	6.06	6.3	6.53	6.76	6.95	7.1	7.15
35 °C	5.59	5.78	5.98	6.18	6.37	6.54	6.67	6.75	6.76
30 °C	5.56	5.73	5.9	6.06	6.21	6.33	6.4	6.41	6.39
25 °C	5.54	5.68	5.82	5.95	6.05	6.11	6.12	6.08	6.03
20 °C	5.5	5.62	5.73	5.82	5.88	5.89	5.86	-	-

All data subject to change without notice

Model: D3-13.1Y

Refrigerant: R404A

Power supply: 400/3/50 DOL-STAR

Performance data:

Operating mode	Subcritical, 100 % of the capacity
Liquid subcooling	0 K
Suction gas temperature	20 °C
Useful fraction of superheating	100 %
Frequency	50 Hz
Additional cooling required	

Mass flow [kg/h]

T.Evap	-30 °C	-25 °C	-20 °C	-15 °C	-10 °C	-5 °C	0 °C	5 °C	7.5 °C
T.Cond									
55 °C	-	-	115	147	185	229	282	345	381
50 °C	65	90	118	151	189	235	288	353	389
45 °C	68	93	122	155	194	241	296	361	398
40 °C	72	96	126	160	200	248	304	370	408
35 °C	75	100	130	165	206	255	312	380	418
30 °C	79	104	134	170	213	263	321	390	429
25 °C	83	109	139	176	219	270	330	400	439
20 °C	87	113	144	182	226	278	339	-	-