

Model: D3-19.1Y

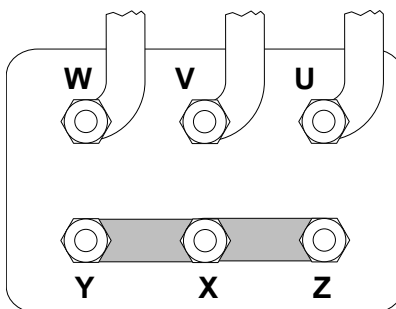
Refrigerant: R404A

Power supply: 400/3/50 DOL-STAR

Technical data:

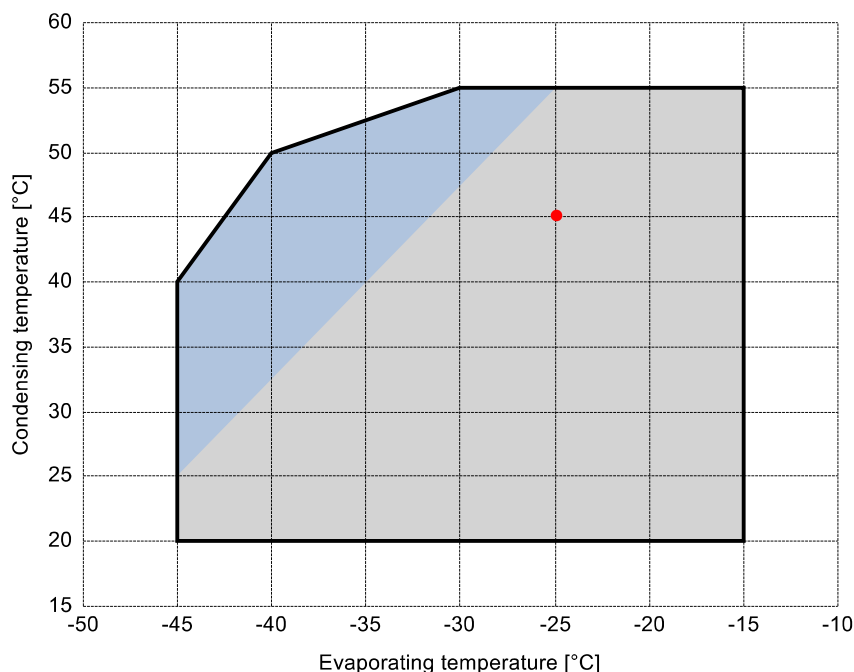
Displacement	19.12 m³/h
Nominal compressor speed	1450 rpm
Motor voltage	400 V
Nominal operating frequency	50 Hz
maximum allowed operating current (MRA)	9.8 A
locked rotor current (LRA)	43.7 A
Number of pistons	2
Net weight	49 kg
Lubricant	FRASCOLD POE32
Oil charge	1.2 l

Motor connections:



Application range:

Additional cooling required



Reference conditions according to EN12900

- Suction gas temperature = 20 °C
- Liquid subcooling = 0 K
- 100% of the capacity

Certified by:

- ASERCOM (ref. EN12900, 50 Hz, 100% cap.)

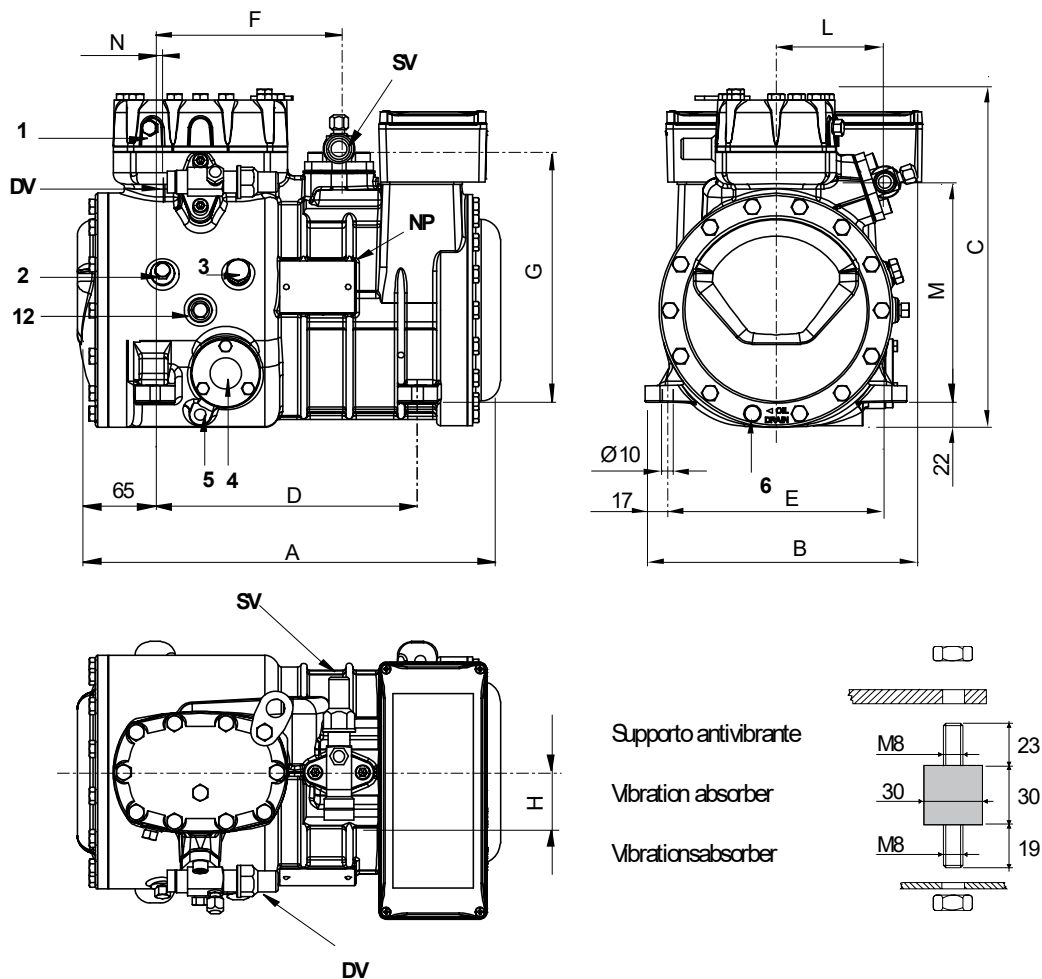
All data subject to change without notice

Model: D3-19.1Y

Refrigerant: R404A

Power supply: 400/3/50 DOL-STAR

Dimensions:



Legend:

SV: Suction Valve	1 1/8" in - 28.575 mm	M: Discharge valve	192 mm
DV: Discharge valve	5/8" in - 16 mm	N: Discharge valve	13 mm
A: Length	374 mm	1: High pressure connection	1/8" NPT
B: Width	242 mm	2: Low pressure connection	1/8" NPT
C: Height	317 mm	3: Oil charge plug	1/4" GAS
D: Base mounting	234 mm	4: Oil level sight glass	-
E: Base mounting	194 mm	5: Crankcase heater seat	-
F: Suction Valve	165 mm	6: Oil drain plug	M8 x 22
G: Suction Valve	225 mm	12: Oil return plug	1/8" NPT
H: Suction Valve	53 mm	NP: Nameplate	
L: Discharge valve	94 mm		

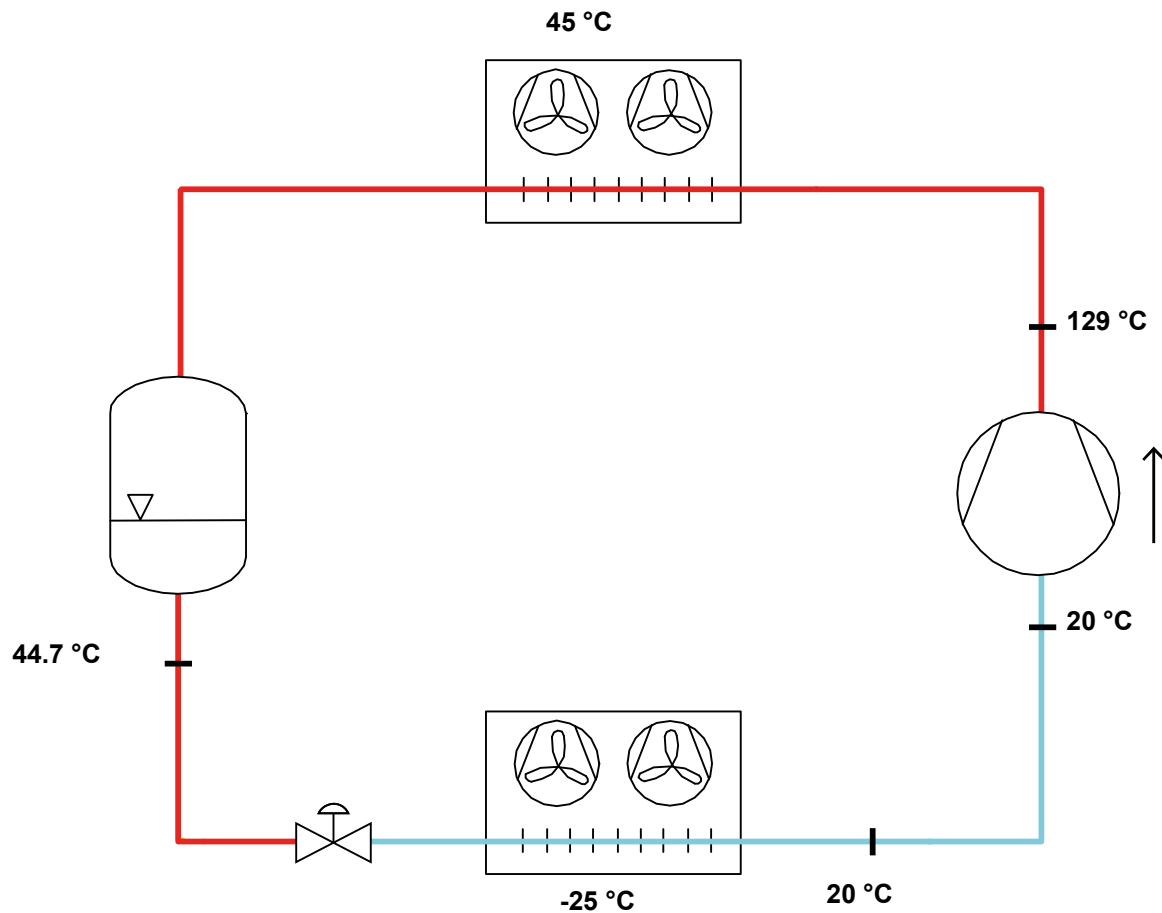
All data subject to change without notice

Model: D3-19.1Y

Refrigerant: R404A

Power supply: 400/3/50 DOL-STAR

P&I Diagram:



Model: D3-19.1Y

Refrigerant: R404A

Power supply: 400/3/50 DOL-STAR

Performance data:

Operating mode	Subcritical, 100 % of the capacity
Liquid subcooling	0 K
Suction gas temperature	20 °C
Useful fraction of superheating	100 %
Frequency	50 Hz
Additional cooling required	

Refrigerating capacity [kW]

T.Evap	-45 °C	-40 °C	-35 °C	-30 °C	-25 °C	-20 °C	-15 °C
T.Cond							
55 °C	-	-	-	3.257	4.091	5.071	6.222
50 °C	-	2.176	2.854	3.651	4.59	5.695	6.987
45 °C	-	2.414	3.162	4.046	5.09	6.317	7.749
40 °C	1.972	2.656	3.472	4.443	5.59	6.938	8.508
35 °C	2.168	2.902	3.785	4.839	6.089	7.556	9.264
30 °C	2.368	3.15	4.099	5.237	6.587	8.173	10.017
25 °C	2.572	3.401	4.414	5.634	7.084	8.787	10.766
20 °C	2.779	3.654	4.73	6.031	7.579	9.398	11.511

Power input [W]

T.Evap	-45 °C	-40 °C	-35 °C	-30 °C	-25 °C	-20 °C	-15 °C
T.Cond							
55 °C	-	-	-	3494	4029	4591	5165
50 °C	-	2520	2950	3425	3930	4453	4978
45 °C	-	2485	2900	3351	3823	4303	4776
40 °C	2090	2448	2846	3270	3705	4138	4556
35 °C	2061	2408	2785	3177	3573	3956	4315
30 °C	2030	2361	2713	3072	3424	3755	4052
25 °C	1992	2305	2629	2951	3256	3531	3763
20 °C	1946	2238	2531	2812	3067	3283	3445

COP/EER [W/W]

T.Evap	-45 °C	-40 °C	-35 °C	-30 °C	-25 °C	-20 °C	-15 °C
T.Cond							
55 °C	-	-	-	0.93	1.02	1.1	1.2
50 °C	-	0.86	0.97	1.07	1.17	1.28	1.4
45 °C	-	0.97	1.09	1.21	1.33	1.47	1.62
40 °C	0.94	1.09	1.22	1.36	1.51	1.68	1.87
35 °C	1.05	1.21	1.36	1.52	1.7	1.91	2.15
30 °C	1.17	1.33	1.51	1.7	1.92	2.18	2.47
25 °C	1.29	1.48	1.68	1.91	2.18	2.49	2.86
20 °C	1.43	1.63	1.87	2.14	2.47	2.86	3.34

Current [A]

T.Evap	-45 °C	-40 °C	-35 °C	-30 °C	-25 °C	-20 °C	-15 °C
T.Cond							
55 °C	-	-	-	7.08	7.73	8.46	9.25
50 °C	-	6.07	6.48	7	7.61	8.28	8.99
45 °C	-	6.03	6.43	6.92	7.48	8.08	8.72
40 °C	5.71	6	6.38	6.83	7.33	7.87	8.42
35 °C	5.68	5.97	6.32	6.72	7.17	7.64	8.1
30 °C	5.66	5.93	6.25	6.61	7	7.39	7.76
25 °C	5.63	5.88	6.17	6.48	6.81	7.12	7.4
20 °C	5.6	5.82	6.08	6.34	6.61	6.84	7.02

All data subject to change without notice

Model: D3-19.1Y

Refrigerant: R404A

Power supply: 400/3/50 DOL-STAR

Performance data:

Operating mode	Subcritical, 100 % of the capacity
Liquid subcooling	0 K
Suction gas temperature	20 °C
Useful fraction of superheating	100 %
Frequency	50 Hz
Additional cooling required	

Mass flow [kg/h]							
T.Evap	-45 °C	-40 °C	-35 °C	-30 °C	-25 °C	-20 °C	-15 °C
T.Cond							
55 °C	-	-	-	111	140	176	218
50 °C	-	67	89	114	145	181	224
45 °C	-	69	91	118	149	186	230
40 °C	53	72	94	121	153	191	236
35 °C	55	74	96	124	157	196	242
30 °C	57	76	99	127	160	200	247
25 °C	59	78	101	130	164	204	252
20 °C	60	80	104	132	167	209	257