

Model: D4-18.1Y

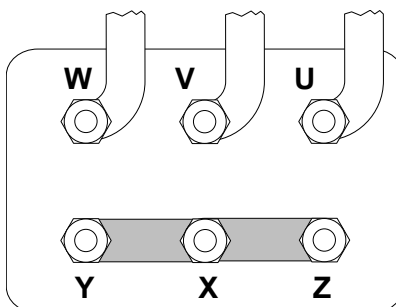
Refrigerant: R404A

Power supply: 400/3/50 DOL-STAR

Technical data:

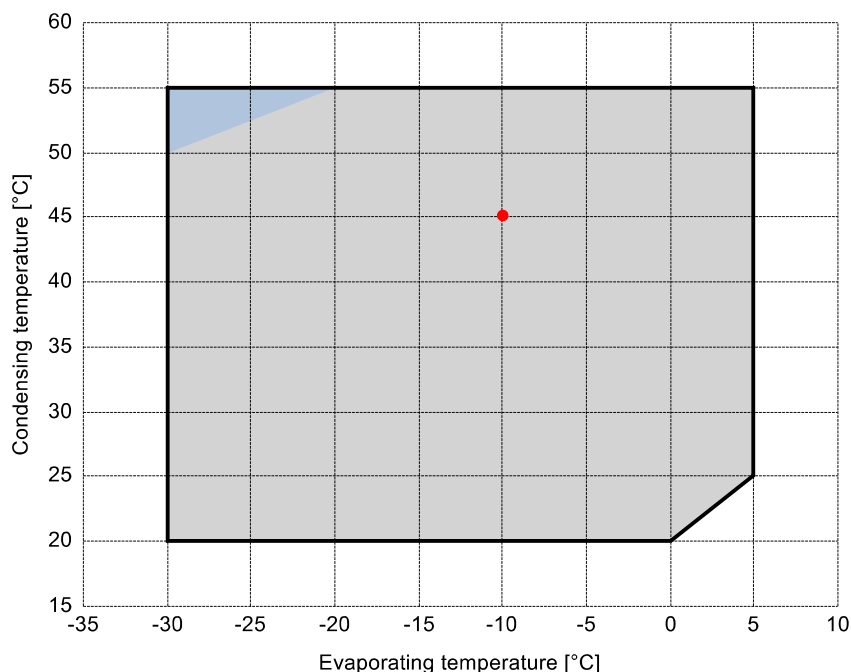
Displacement	17.93 m³/h
Nominal compressor speed	1450 rpm
Motor voltage	400 V
Nominal operating frequency	50 Hz
maximum allowed operating current (MRA)	12.5 A
locked rotor current (LRA)	52 A
Number of pistons	2
Net weight	55 kg
Lubricant	FRASCOLD POE32
Oil charge	1.2 l

Motor connections:



Application range:

Additional cooling required



Reference conditions according to EN12900

- Suction gas temperature = 20 °C
- Liquid subcooling = 0 K
- 100% of the capacity

Certified by:

- ASERCOM (ref. EN12900, 50 Hz, 100% cap.)

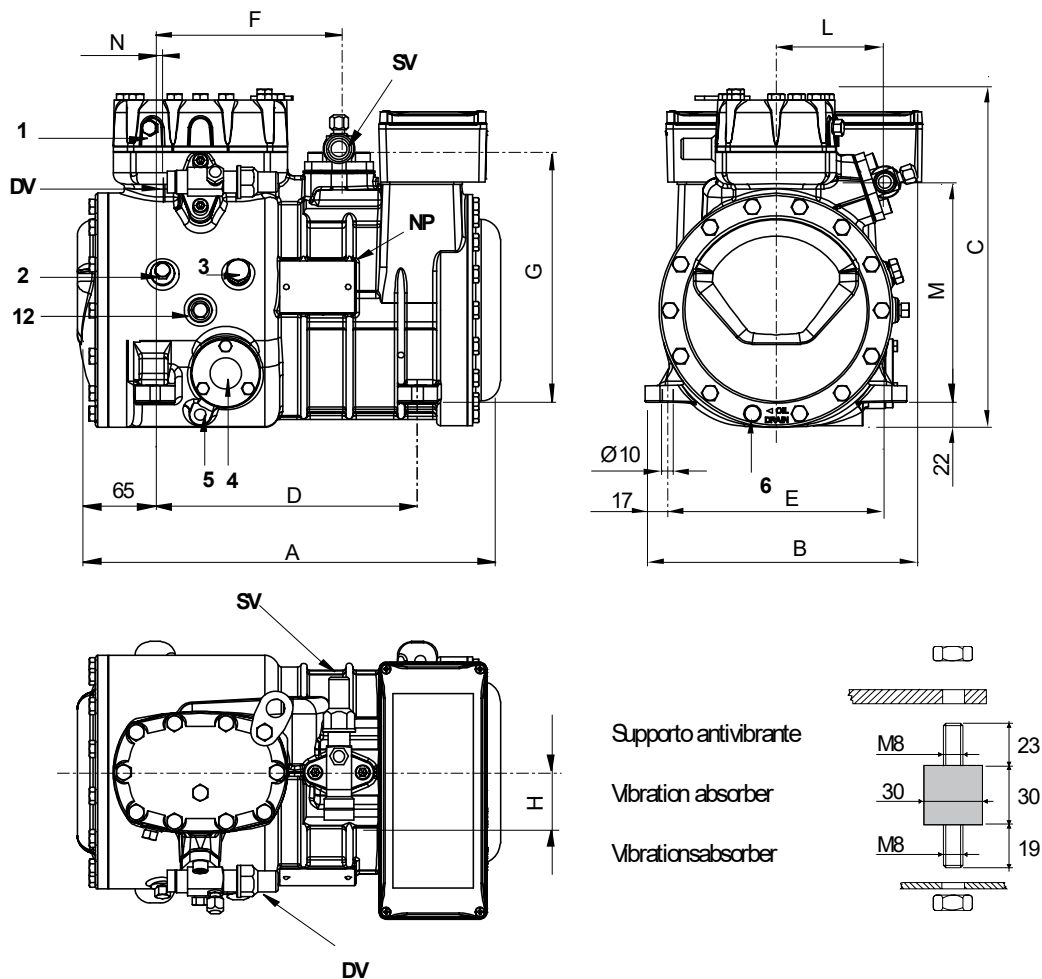
All data subject to change without notice

Model: D4-18.1Y

Refrigerant: R404A

Power supply: 400/3/50 DOL-STAR

Dimensions:



Legend:

SV: Suction Valve	1 1/8" in - 28.575 mm	M: Discharge valve	192 mm
DV: Discharge valve	3/4" in - 19 mm	N: Discharge valve	5 mm
A: Length	401 mm	1: High pressure connection	1/8" NPT
B: Width	242 mm	2: Low pressure connection	1/8" NPT
C: Height	317 mm	3: Oil charge plug	1/4" GAS
D: Base mounting	234 mm	4: Oil level sight glass	-
E: Base mounting	194 mm	5: Crankcase heater seat	-
F: Suction Valve	165 mm	6: Oil drain plug	M8 x 22
G: Suction Valve	225 mm	12: Oil return plug	1/8" NPT
H: Suction Valve	53 mm	NP: Nameplate	
L: Discharge valve	94 mm		

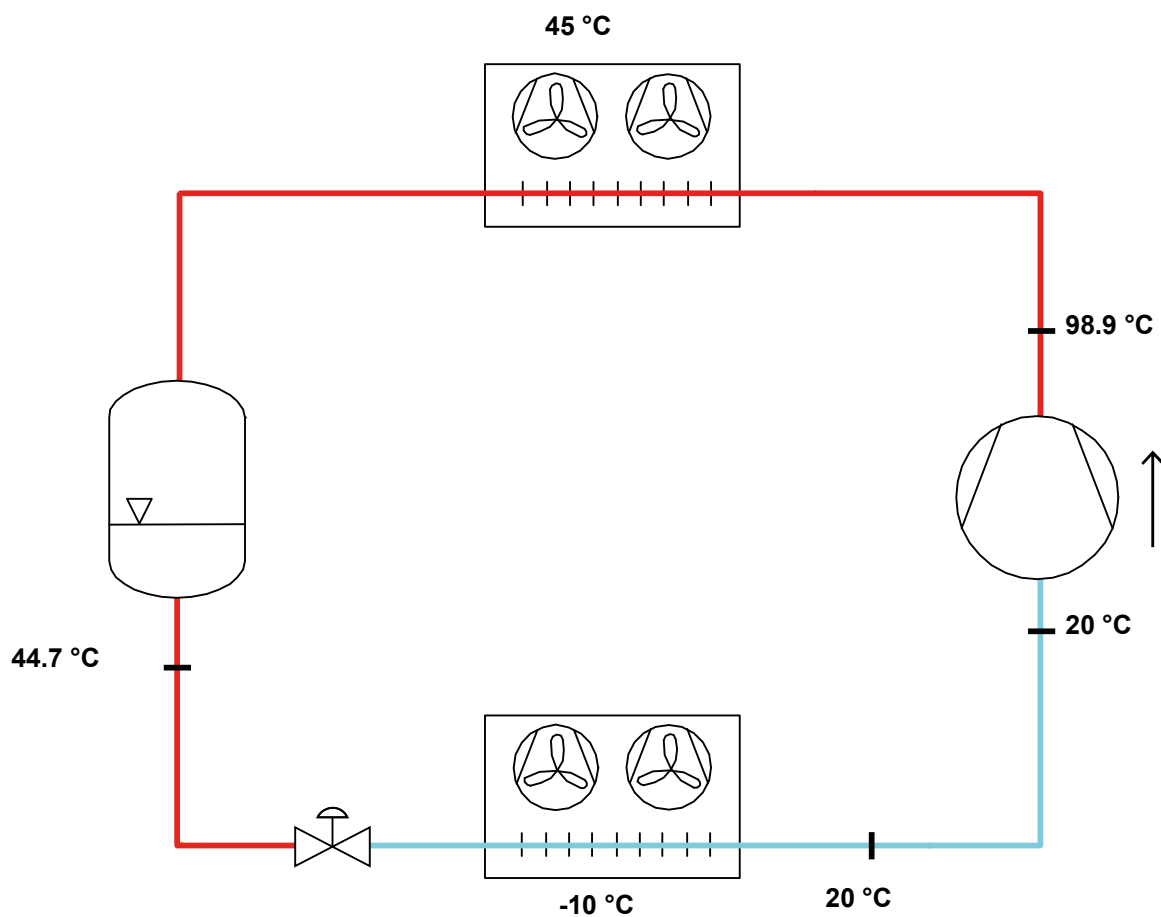
All data subject to change without notice

Model: D4-18.1Y

Refrigerant: R404A

Power supply: 400/3/50 DOL-STAR

P&I Diagram:



Model: D4-18.1Y

Refrigerant: R404A

Power supply: 400/3/50 DOL-STAR

Performance data:

Operating mode	Subcritical, 100 % of the capacity
Liquid subcooling	0 K
Suction gas temperature	20 °C
Useful fraction of superheating	100 %
Frequency	50 Hz
Additional cooling required	

Refrigerating capacity [kW]

T.Evap	-30 °C	-25 °C	-20 °C	-15 °C	-10 °C	-5 °C	0 °C	5 °C
T.Cond								
55 °C	3.165	3.987	4.934	6.03	7.299	8.766	10.455	12.39
50 °C	3.431	4.368	5.452	6.705	8.153	9.82	11.731	13.909
45 °C	3.735	4.781	5.994	7.398	9.019	10.88	13.006	15.42
40 °C	4.068	5.216	6.553	8.102	9.889	11.937	14.272	16.916
35 °C	4.423	5.667	7.12	8.808	10.755	12.984	15.521	18.389
30 °C	4.791	6.125	7.689	9.508	11.608	14.012	16.745	19.831
25 °C	5.165	6.581	8.25	10.195	12.442	15.014	17.936	21.233
20 °C	5.537	7.029	8.796	10.86	13.247	15.981	19.087	-

Power input [W]

T.Evap	-30 °C	-25 °C	-20 °C	-15 °C	-10 °C	-5 °C	0 °C	5 °C
T.Cond								
55 °C	3362	3767	4202	4653	5109	5557	5984	6378
50 °C	3230	3612	4018	4436	4853	5258	5636	5975
45 °C	3109	3465	3841	4224	4601	4959	5287	5571
40 °C	2995	3324	3668	4013	4348	4659	4935	5162
35 °C	2884	3185	3495	3801	4092	4355	4576	4744
30 °C	2775	3045	3319	3586	3831	4043	4208	4315
25 °C	2663	2901	3138	3362	3560	3720	3828	3873
20 °C	2546	2750	2949	3129	3278	3383	3432	-

COP/EER [W/W]

T.Evap	-30 °C	-25 °C	-20 °C	-15 °C	-10 °C	-5 °C	0 °C	5 °C
T.Cond								
55 °C	0.94	1.06	1.17	1.3	1.43	1.58	1.75	1.94
50 °C	1.06	1.21	1.36	1.51	1.68	1.87	2.08	2.33
45 °C	1.2	1.38	1.56	1.75	1.96	2.19	2.46	2.77
40 °C	1.36	1.57	1.79	2.02	2.27	2.56	2.89	3.28
35 °C	1.53	1.78	2.04	2.32	2.63	2.98	3.39	3.88
30 °C	1.73	2.01	2.32	2.65	3.03	3.47	3.98	4.6
25 °C	1.94	2.27	2.63	3.03	3.49	4.04	4.69	5.48
20 °C	2.17	2.56	2.98	3.47	4.04	4.72	5.56	-

Current [A]

T.Evap	-30 °C	-25 °C	-20 °C	-15 °C	-10 °C	-5 °C	0 °C	5 °C
T.Cond								
55 °C	7.93	8.34	8.82	9.36	9.93	10.51	11.07	11.61
50 °C	7.82	8.18	8.61	9.09	9.61	10.12	10.61	11.06
45 °C	7.71	8.03	8.42	8.84	9.29	9.74	10.16	10.53
40 °C	7.62	7.9	8.23	8.61	8.99	9.37	9.71	10
35 °C	7.53	7.78	8.06	8.37	8.69	9	9.26	9.47
30 °C	7.45	7.66	7.9	8.15	8.41	8.64	8.83	8.95
25 °C	7.38	7.55	7.74	7.94	8.13	8.29	8.4	8.45
20 °C	7.31	7.44	7.58	7.73	7.86	7.95	8	-

All data subject to change without notice

Model: D4-18.1Y

Refrigerant: R404A

Power supply: 400/3/50 DOL-STAR

Performance data:

Operating mode	Subcritical, 100 % of the capacity
Liquid subcooling	0 K
Suction gas temperature	20 °C
Useful fraction of superheating	100 %
Frequency	50 Hz
Additional cooling required	

Mass flow [kg/h]								
T.Evap	-30 °C	-25 °C	-20 °C	-15 °C	-10 °C	-5 °C	0 °C	5 °C
T.Cond								
55 °C	108	137	171	211	258	315	382	461
50 °C	107	138	173	215	264	322	391	472
45 °C	108	140	176	220	270	330	400	483
40 °C	111	143	180	225	277	338	409	493
35 °C	113	146	184	230	283	345	418	503
30 °C	116	149	188	235	289	352	426	511
25 °C	119	152	192	239	294	358	432	519
20 °C	122	155	195	242	298	363	438	-