

Model: Q5-25.1Y

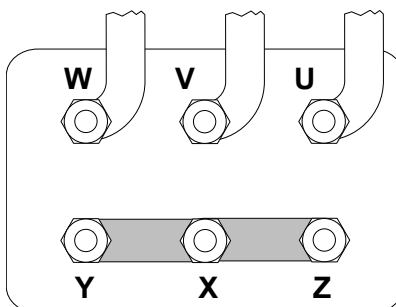
Refrigerant: R404A

Power supply: 400/3/50 DOL-STAR

Technical data:

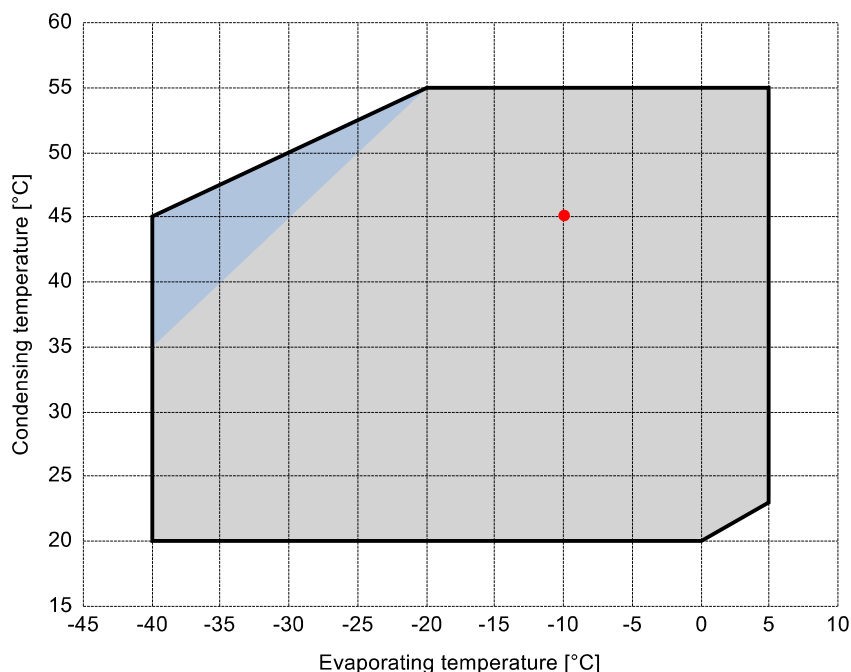
Displacement	24.69 m³/h
Nominal compressor speed	1450 rpm
Motor voltage	400 V
Nominal operating frequency	50 Hz
maximum allowed operating current (MRA)	12.7 A
locked rotor current (LRA)	63.1 A
Number of pistons	4
Net weight	79 kg
Lubricant	FRASCOLD POE32
Oil charge	1.6 l

Motor connections:



Application range:

Additional cooling required



Reference conditions according to EN12900

- Suction gas temperature = 20 °C
- Liquid subcooling = 0 K
- 100% of the capacity

Certified by:

- ASERCOM (ref. EN12900, 50 Hz, 100% cap.)

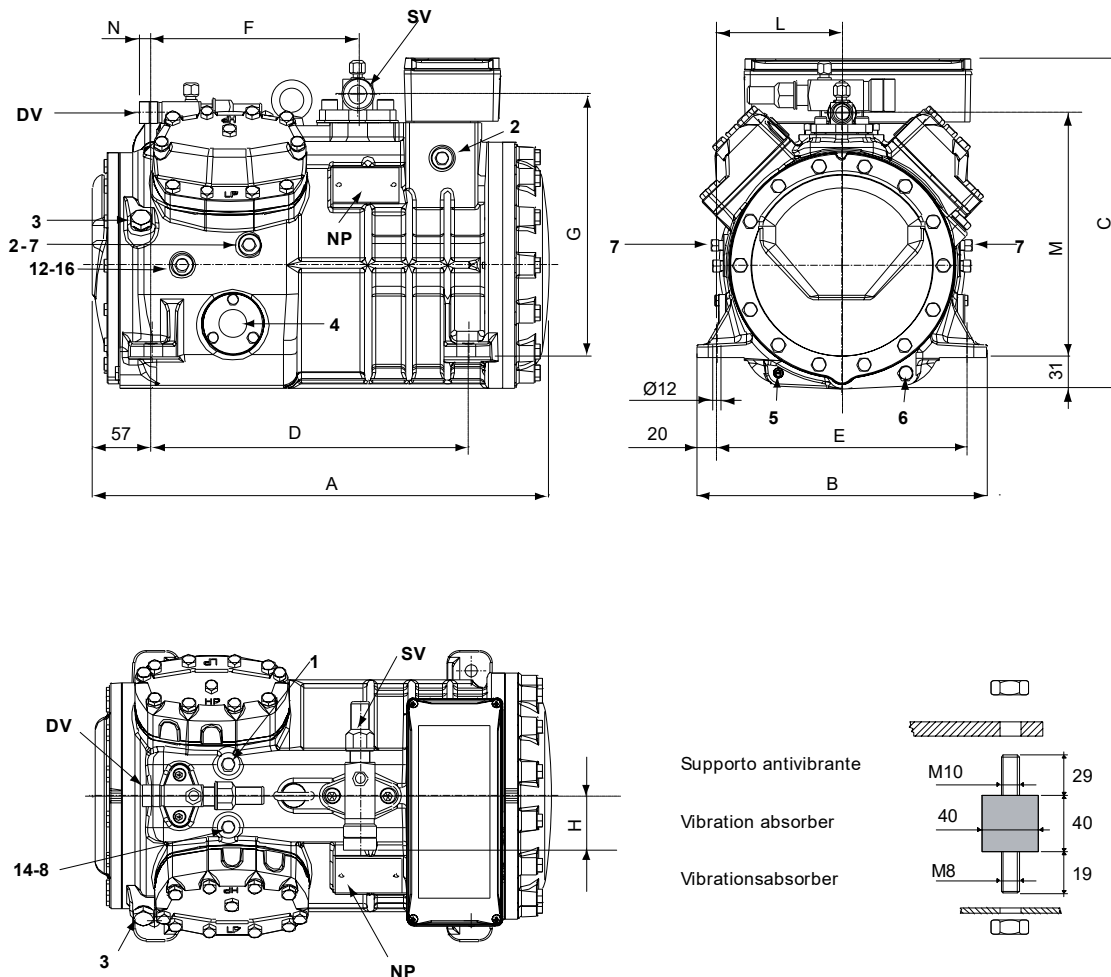
All data subject to change without notice

Model: Q5-25.1Y

Refrigerant: R404A

Power supply: 400/3/50 DOL-STAR

Dimensions:



Legend:

SV: Suction Valve	1 1/8" in - 28.575 mm	1: High pressure connection	1/8" NPT
DV: Discharge valve	7/8" in - 22.225 mm	2: Low pressure connection	1/8" NPT
A: Length	449 mm	3: Oil charge plug	1/4" GAS
B: Width	286 mm	4: Oil level sight glass	-
C: Height	325 mm	5: Crankcase heater seat	-
D: Base mounting	312 mm	6: Oil drain plug	M8 x 22
E: Base mounting	246 mm	7: Liquid injection plug	1/8" NPT
F: Suction Valve	203 mm	8: Liquid injection sensor plug	1/8" NPT
G: Suction Valve	258 mm	12: Oil return plug	1/8" NPT
H: Suction Valve	53 mm	14: Max discharge temperature sensor connection	1/8" NPT
L: Discharge valve	123 mm	16: Crankcase pressure plug	1/8" NPT
M: Discharge valve	239 mm	NP: Nameplate	
N: Discharge valve	17 mm		

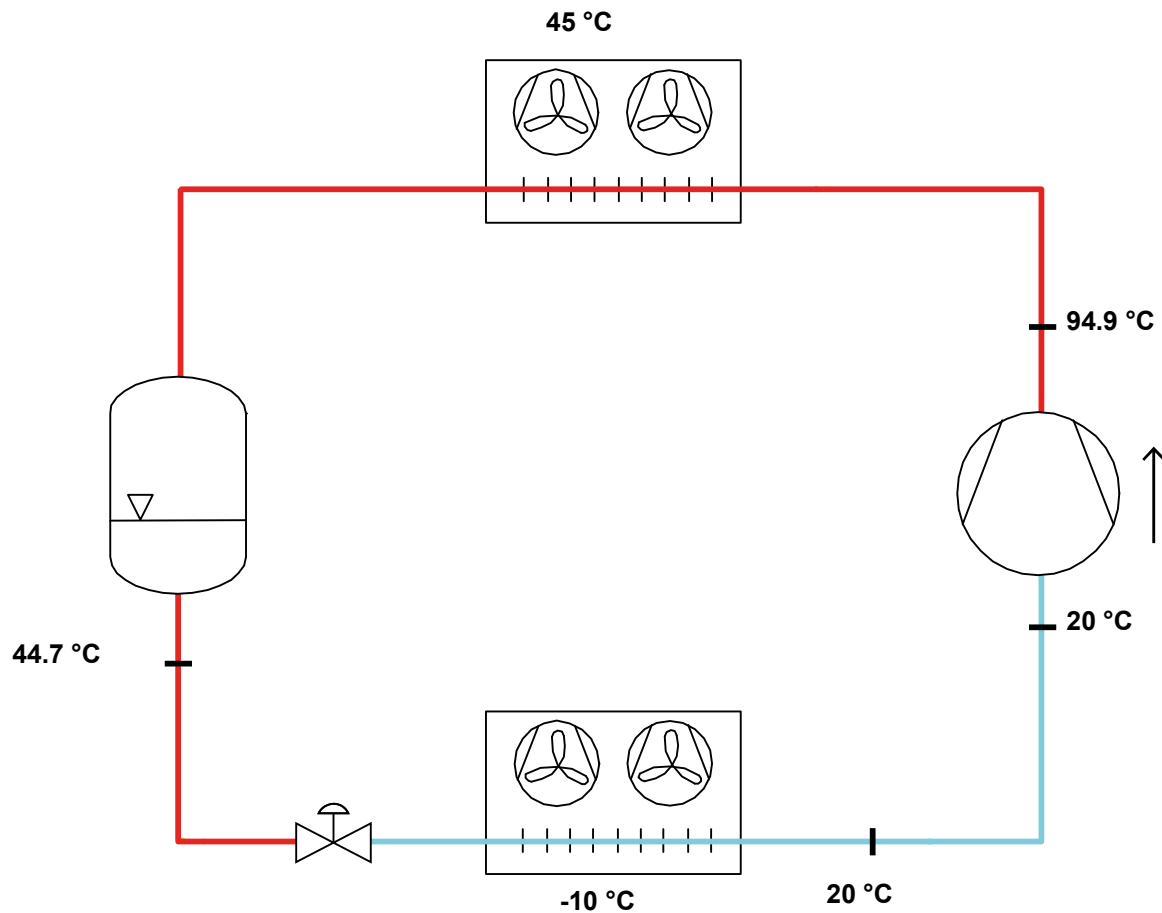
All data subject to change without notice

Model: Q5-25.1Y

Refrigerant: R404A

Power supply: 400/3/50 DOL-STAR

P&I Diagram:



Model: Q5-25.1Y

Refrigerant: R404A

Power supply: 400/3/50 DOL-STAR

Performance data:

Operating mode	Subcritical, 100 % of the capacity
Liquid subcooling	0 K
Suction gas temperature	20 °C
Useful fraction of superheating	100 %
Frequency	50 Hz
Additional cooling required	

Refrigerating capacity [kW]

T.Evap	-35 °C	-30 °C	-25 °C	-20 °C	-15 °C	-10 °C	-5 °C	0 °C	5 °C
T.Cond									
55 °C	-	-	-	5.992	7.597	9.459	11.62	14.119	16.998
50 °C	-	3.954	5.29	6.838	8.639	10.735	13.164	15.968	19.188
45 °C	3.252	4.505	5.966	7.676	9.674	12.002	14.7	17.808	21.368
40 °C	3.709	5.051	6.637	8.507	10.702	13.262	16.228	19.641	23.541
35 °C	4.163	5.593	7.304	9.334	11.725	14.518	17.752	21.469	25.708
30 °C	4.615	6.134	7.968	10.159	12.747	15.771	19.273	23.293	27.872
25 °C	5.067	6.674	8.633	10.984	13.767	17.023	20.793	25.117	30.035
20 °C	5.521	7.216	9.299	11.81	14.789	18.276	22.313	26.94	-

Power input [W]

T.Evap	-35 °C	-30 °C	-25 °C	-20 °C	-15 °C	-10 °C	-5 °C	0 °C	5 °C
T.Cond									
55 °C	-	-	-	4815	5477	6118	6730	7303	7829
50 °C	-	3492	4117	4733	5332	5904	6439	6930	7368
45 °C	2912	3491	4064	4622	5155	5656	6115	6523	6871
40 °C	2930	3462	3981	4479	4947	5376	5757	6081	6338
35 °C	2921	3405	3869	4307	4708	5064	5366	5604	5770
30 °C	2885	3319	3728	4104	4437	4719	4941	5093	5167
25 °C	2821	3205	3558	3871	4136	4343	4483	4548	4528
20 °C	2731	3063	3358	3608	3803	3934	3992	3969	-

COP/EER [W/W]

T.Evap	-35 °C	-30 °C	-25 °C	-20 °C	-15 °C	-10 °C	-5 °C	0 °C	5 °C
T.Cond									
55 °C	-	-	-	1.24	1.39	1.55	1.73	1.93	2.17
50 °C	-	1.13	1.28	1.44	1.62	1.82	2.04	2.3	2.6
45 °C	1.12	1.29	1.47	1.66	1.88	2.12	2.4	2.73	3.11
40 °C	1.27	1.46	1.67	1.9	2.16	2.47	2.82	3.23	3.71
35 °C	1.42	1.64	1.89	2.17	2.49	2.87	3.31	3.83	4.46
30 °C	1.6	1.85	2.14	2.48	2.87	3.34	3.9	4.57	5.39
25 °C	1.8	2.08	2.43	2.84	3.33	3.92	4.64	5.52	6.63
20 °C	2.02	2.36	2.77	3.27	3.89	4.65	5.59	6.79	-

Current [A]

T.Evap	-35 °C	-30 °C	-25 °C	-20 °C	-15 °C	-10 °C	-5 °C	0 °C	5 °C
T.Cond									
55 °C	-	-	-	8.15	9.09	10.03	10.93	11.78	12.58
50 °C	-	6.38	7.19	8.04	8.88	9.71	10.5	11.23	11.88
45 °C	5.68	6.38	7.12	7.88	8.63	9.35	10.02	10.62	11.14
40 °C	5.71	6.34	7.01	7.68	8.34	8.95	9.5	9.97	10.35
35 °C	5.7	6.27	6.86	7.45	8	8.5	8.93	9.28	9.52
30 °C	5.65	6.16	6.68	7.17	7.62	8.02	8.33	8.54	8.65
25 °C	5.58	6.03	6.46	6.86	7.21	7.49	7.69	7.78	7.75
20 °C	5.48	5.86	6.21	6.52	6.77	6.95	7.02	6.99	-

All data subject to change without notice

Model: Q5-25.1Y

Refrigerant: R404A

Power supply: 400/3/50 DOL-STAR

Performance data:

Operating mode	Subcritical, 100 % of the capacity
Liquid subcooling	0 K
Suction gas temperature	20 °C
Useful fraction of superheating	100 %
Frequency	50 Hz
Additional cooling required	

Mass flow [kg/h]

T.Evap	-35 °C	-30 °C	-25 °C	-20 °C	-15 °C	-10 °C	-5 °C	0 °C	5 °C
T.Cond									
55 °C	-	-	-	207	266	335	417	515	633
50 °C	-	124	167	217	277	348	432	532	651
45 °C	94	131	174	226	287	360	446	548	669
40 °C	100	137	181	234	297	371	459	563	686
35 °C	106	143	188	242	306	382	472	578	703
30 °C	111	149	194	249	314	392	484	592	719
25 °C	116	154	200	256	322	402	496	605	734
20 °C	121	159	205	262	330	411	507	618	-