

## Model: Q7-25.1Y

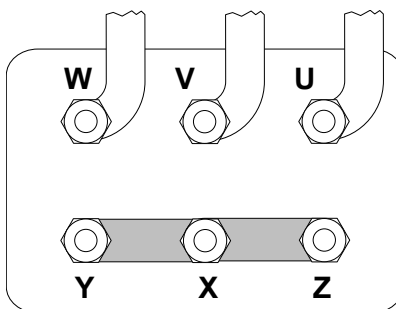
Refrigerant: R404A

Power supply: 400/3/50 DOL-STAR

### Technical data:

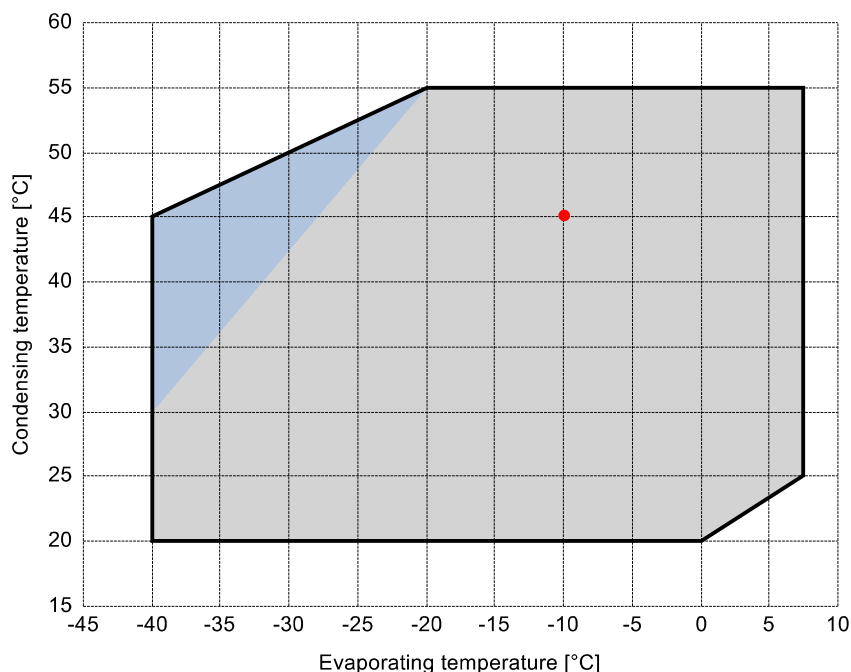
Displacement	24.69 m³/h
Nominal compressor speed	1450 rpm
Motor voltage	400 V
Nominal operating frequency	50 Hz
maximum allowed operating current (MRA)	15.4 A
locked rotor current (LRA)	87.3 A
Number of pistons	4
Net weight	79 kg
Lubricant	FRASCOLD POE32
Oil charge	1.6 l

### Motor connections:



### Application range:

Additional cooling required



#### Reference conditions according to EN12900

- Suction gas temperature = 20 °C
- Liquid subcooling = 0 K
- 100% of the capacity

#### Certified by:

- ASERCOM (ref. EN12900, 50 Hz, 100% cap.)

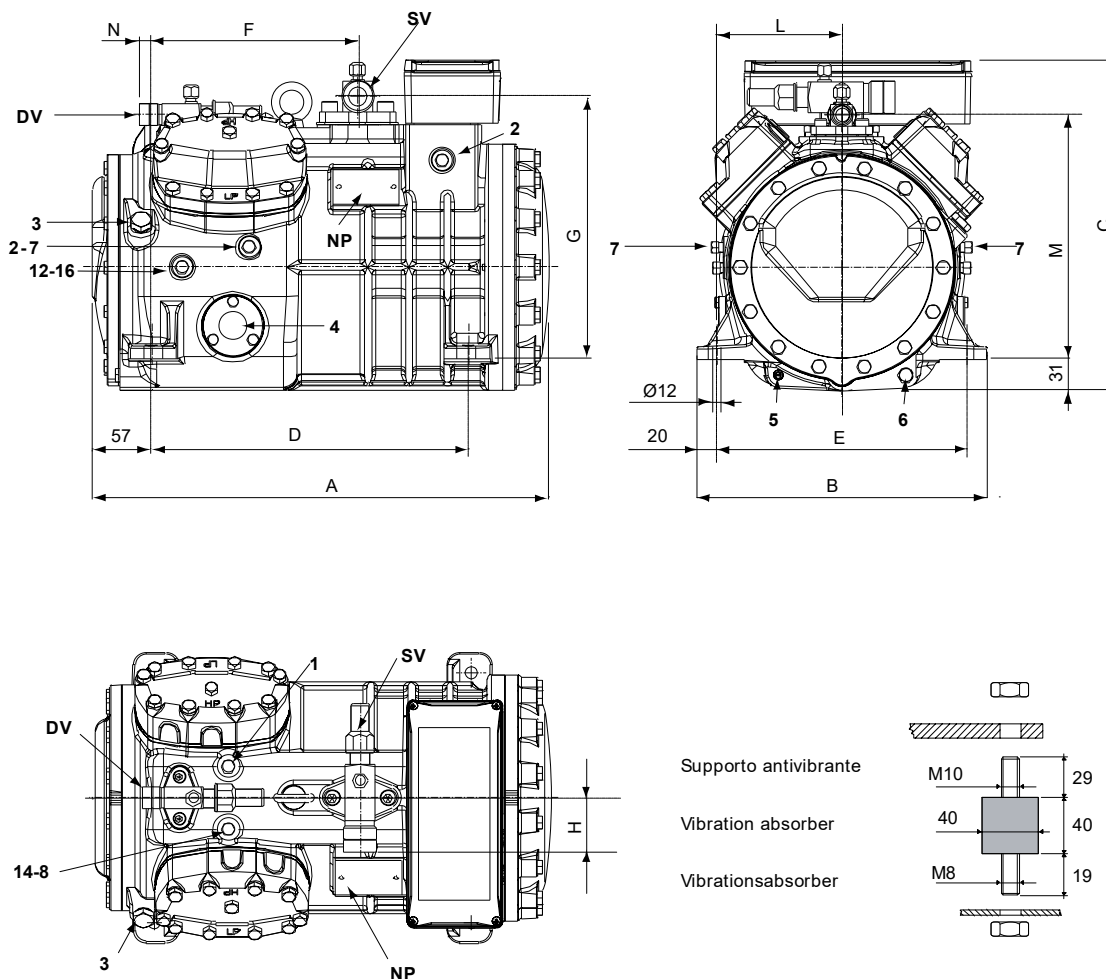
All data subject to change without notice

## Model: Q7-25.1Y

Refrigerant: R404A

Power supply: 400/3/50 DOL-STAR

## Dimensions:



## Legend:

SV: Suction Valve	1 1/8" in - 28.575 mm	1: High pressure connection	1/8" NPT
DV: Discharge valve	7/8" in - 22.225 mm	2: Low pressure connection	1/8" NPT
A: Length	449 mm	3: Oil charge plug	1/4" GAS
B: Width	286 mm	4: Oil level sight glass	-
C: Height	325 mm	5: Crankcase heater seat	-
D: Base mounting	312 mm	6: Oil drain plug	M8 x 22
E: Base mounting	246 mm	7: Liquid injection plug	1/8" NPT
F: Suction Valve	203 mm	8: Liquid injection sensor plug	1/8" NPT
G: Suction Valve	258 mm	12: Oil return plug	1/8" NPT
H: Suction Valve	53 mm	14: Max discharge temperature sensor connection	1/8" NPT
L: Discharge valve	123 mm	16: Crankcase pressure plug	1/8" NPT
M: Discharge valve	239 mm	NP: Nameplate	
N: Discharge valve	17 mm		

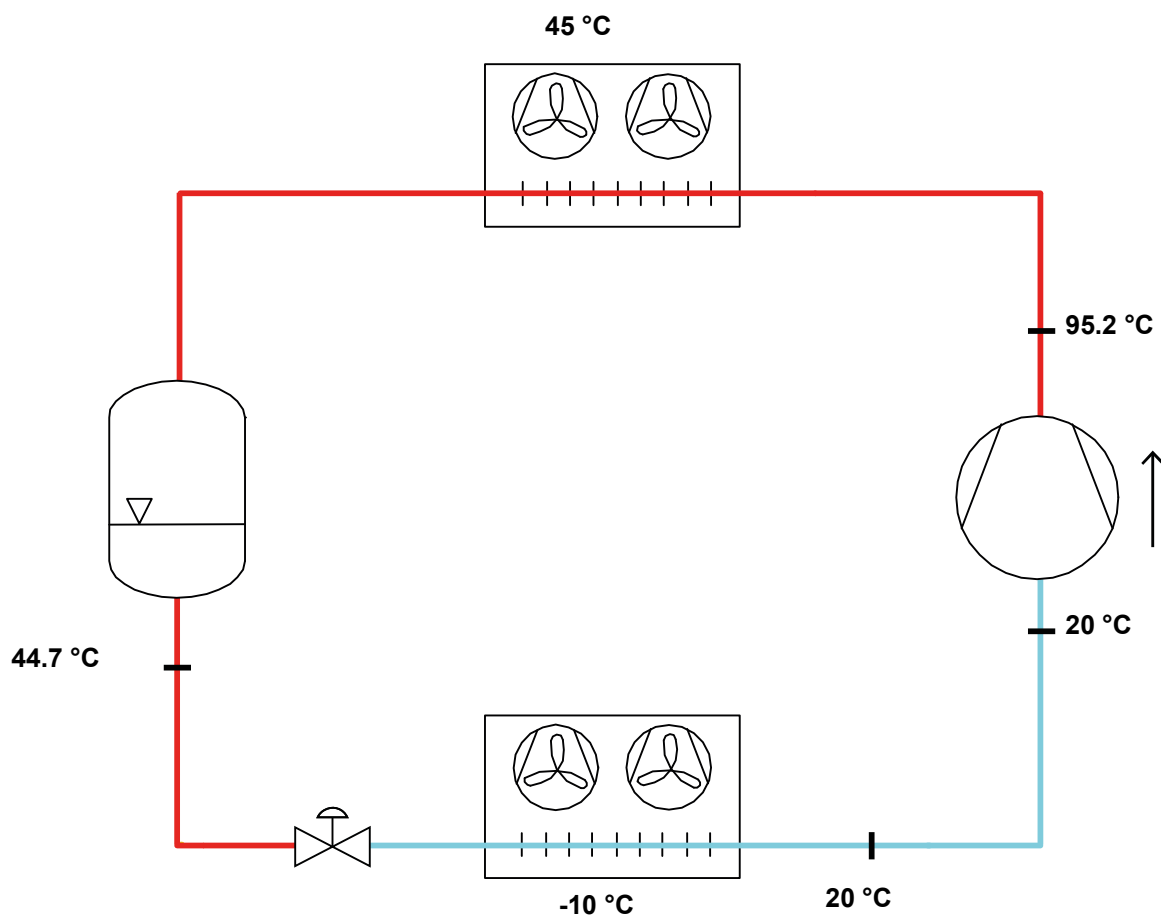
All data subject to change without notice

**Model: Q7-25.1Y**

Refrigerant: R404A

Power supply: 400/3/50 DOL-STAR

## P&I Diagram:



**Model: Q7-25.1Y**

Refrigerant: R404A

Power supply: 400/3/50 DOL-STAR

**Performance data:**

Operating mode	Subcritical, 100 % of the capacity
Liquid subcooling	0 K
Suction gas temperature	20 °C
Useful fraction of superheating	100 %
Frequency	50 Hz
Additional cooling required	

**Refrigerating capacity [kW]**

T.Evap	-40 °C	-35 °C	-30 °C	-25 °C	-20 °C	-15 °C	-10 °C	-5 °C	0 °C	5 °C	7.5 °C
T.Cond											
55 °C	-	-	-	-	5.99	7.551	9.426	11.66	14.295	17.377	19.098
50 °C	-	-	4.03	5.24	6.712	8.49	10.618	13.139	16.097	19.537	21.451
45 °C	2.448	3.346	4.454	5.816	7.475	9.475	11.86	14.674	17.961	21.765	23.875
40 °C	2.696	3.681	4.91	6.429	8.28	10.508	13.157	16.27	19.892	24.066	26.373
35 °C	2.969	4.045	5.402	7.083	9.133	11.595	14.513	17.93	21.892	26.442	28.951
30 °C	3.269	4.443	5.933	7.783	10.037	12.738	15.93	19.659	23.966	28.897	31.61
25 °C	3.602	4.879	6.507	8.531	10.994	13.941	17.414	21.458	26.117	31.435	34.355
20 °C	3.969	5.355	7.128	9.332	12.011	15.208	18.967	23.333	28.35	-	-

**Power input [W]**

T.Evap	-40 °C	-35 °C	-30 °C	-25 °C	-20 °C	-15 °C	-10 °C	-5 °C	0 °C	5 °C	7.5 °C
T.Cond											
55 °C	-	-	-	-	4899	5481	6078	6673	7250	7790	8042
50 °C	-	-	3735	4226	4755	5304	5857	6397	6907	7369	7577
45 °C	2829	3201	3633	4109	4610	5121	5624	6102	6539	6917	7079
40 °C	2743	3116	3537	3991	4459	4925	5372	5783	6141	6430	6542
35 °C	2669	3038	3443	3868	4298	4713	5098	5436	5710	5903	5963
30 °C	2605	2962	3345	3737	4122	4481	4799	5058	5241	5332	5338
25 °C	2545	2886	3241	3593	3927	4224	4468	4642	4730	4713	4661
20 °C	2486	2804	3124	3432	3708	3938	4102	4186	4171	-	-

**COP/EER [W/W]**

T.Evap	-40 °C	-35 °C	-30 °C	-25 °C	-20 °C	-15 °C	-10 °C	-5 °C	0 °C	5 °C	7.5 °C
T.Cond											
55 °C	-	-	-	-	1.22	1.38	1.55	1.75	1.97	2.23	2.37
50 °C	-	-	1.08	1.24	1.41	1.6	1.81	2.05	2.33	2.65	2.83
45 °C	0.87	1.05	1.23	1.42	1.62	1.85	2.11	2.4	2.75	3.15	3.37
40 °C	0.98	1.18	1.39	1.61	1.86	2.13	2.45	2.81	3.24	3.74	4.03
35 °C	1.11	1.33	1.57	1.83	2.13	2.46	2.85	3.3	3.83	4.48	4.85
30 °C	1.25	1.5	1.77	2.08	2.44	2.84	3.32	3.89	4.57	5.42	5.92
25 °C	1.41	1.69	2.01	2.37	2.8	3.3	3.9	4.62	5.52	6.67	7.37
20 °C	1.6	1.91	2.28	2.72	3.24	3.86	4.62	5.57	6.8	-	-

**Current [A]**

T.Evap	-40 °C	-35 °C	-30 °C	-25 °C	-20 °C	-15 °C	-10 °C	-5 °C	0 °C	5 °C	7.5 °C
T.Cond											
55 °C	-	-	-	-	11.18	11.78	12.44	13.14	13.86	14.56	14.89
50 °C	-	-	10.15	10.55	11.04	11.59	12.19	12.81	13.43	14.01	14.28
45 °C	9.54	9.77	10.07	10.45	10.9	11.4	11.93	12.47	12.98	13.44	13.64
40 °C	9.49	9.71	10	10.35	10.76	11.2	11.66	12.11	12.51	12.85	12.99
35 °C	9.46	9.66	9.93	10.25	10.62	11	11.38	11.73	12.03	12.24	12.31
30 °C	9.42	9.62	9.86	10.15	10.46	10.78	11.08	11.34	11.53	11.62	11.63
25 °C	9.39	9.57	9.79	10.04	10.3	10.55	10.77	10.93	11.01	11	10.95
20 °C	9.37	9.53	9.72	9.92	10.13	10.31	10.45	10.52	10.51	-	-

All data subject to change without notice

**Model: Q7-25.1Y**

Refrigerant: R404A

Power supply: 400/3/50 DOL-STAR

**Performance data:**

Operating mode	Subcritical, 100 % of the capacity
Liquid subcooling	0 K
Suction gas temperature	20 °C
Useful fraction of superheating	100 %
Frequency	50 Hz
Additional cooling required	

**Mass flow [kg/h]**

T.Evap	-40 °C	-35 °C	-30 °C	-25 °C	-20 °C	-15 °C	-10 °C	-5 °C	0 °C	5 °C	7.5 °C
T.Cond											
55 °C	-	-	-	-	207	264	334	418	522	647	720
50 °C	-	-	126	165	213	272	344	431	536	663	736
45 °C	70	97	129	170	220	281	356	445	553	681	755
40 °C	73	100	133	176	228	291	368	461	571	701	776
35 °C	75	103	138	182	236	302	382	477	590	723	798
30 °C	79	107	144	190	246	314	396	494	609	745	821
25 °C	82	112	150	197	256	327	411	511	630	768	846
20 °C	87	117	157	206	266	340	427	530	650	-	-