

Model: Q7-33.1Y

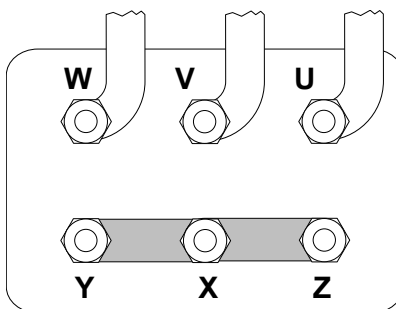
Refrigerant: R404A

Power supply: 400/3/50 DOL-STAR

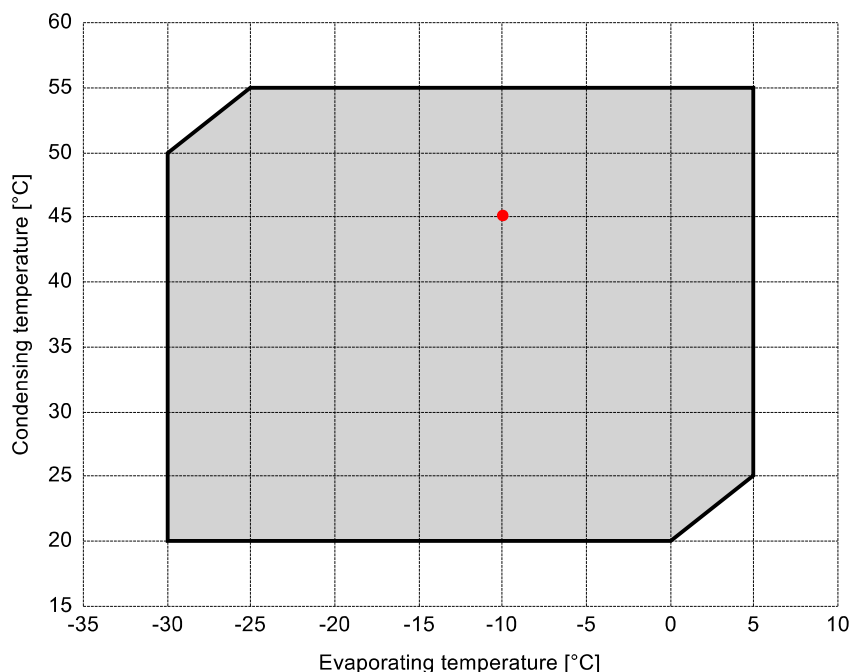
Technical data:

Displacement	32.66 m³/h
Nominal compressor speed	1450 rpm
Motor voltage	400 V
Nominal operating frequency	50 Hz
maximum allowed operating current (MRA)	20 A
locked rotor current (LRA)	87.3 A
Number of pistons	4
Net weight	79 kg
Lubricant	FRASCOLD POE32
Oil charge	1.6 l

Motor connections:



Application range:



Reference conditions according to EN12900

- Suction gas temperature = 20 °C
- Liquid subcooling = 0 K
- 100% of the capacity

Certified by:

- ASERCOM (ref. EN12900, 50 Hz, 100% cap.)

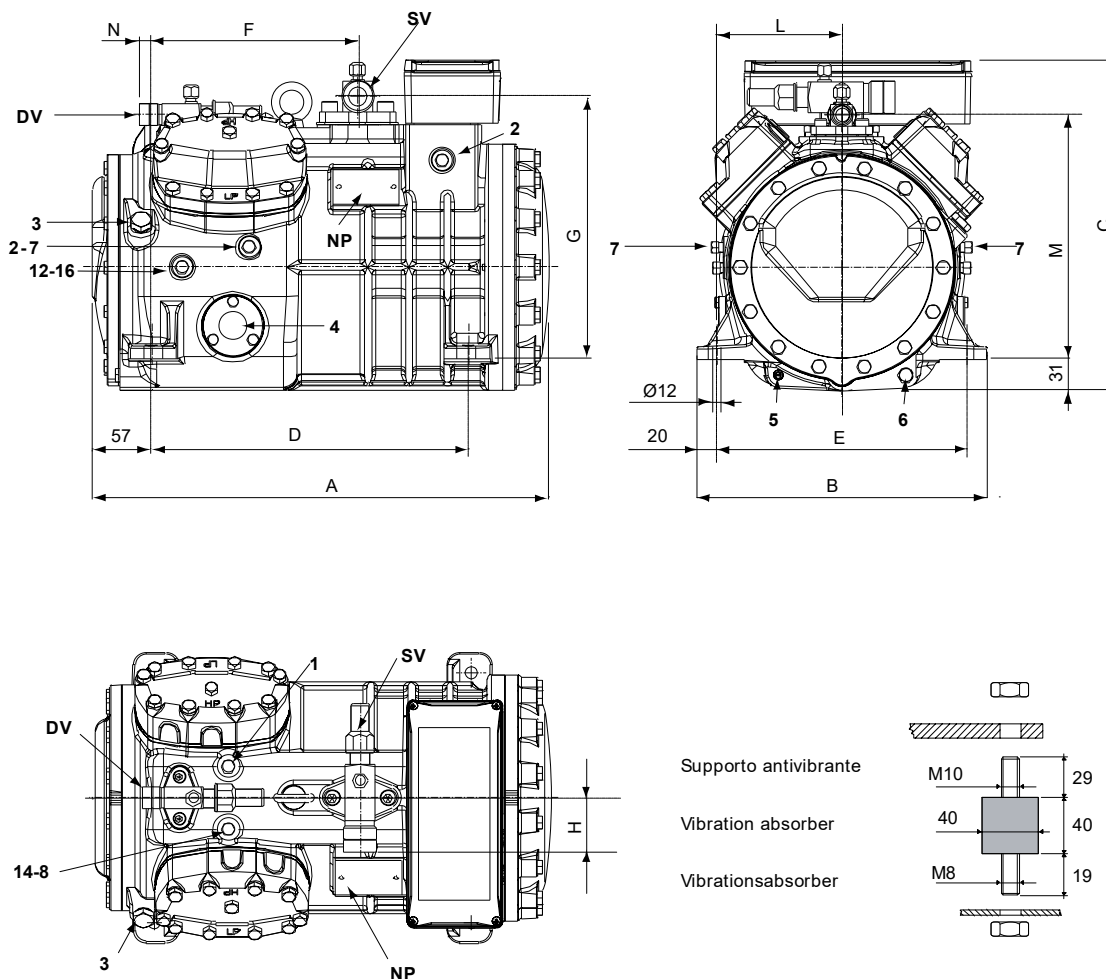
All data subject to change without notice

Model: Q7-33.1Y

Refrigerant: R404A

Power supply: 400/3/50 DOL-STAR

Dimensions:



Legend:

SV: Suction Valve	1 3/8" in - 35 mm	1: High pressure connection	1/8" NPT
DV: Discharge valve	1 1/8" in - 28.575 mm	2: Low pressure connection	1/8" NPT
A: Length	449 mm	3: Oil charge plug	1/4" GAS
B: Width	286 mm	4: Oil level sight glass	-
C: Height	328 mm	5: Crankcase heater seat	-
D: Base mounting	312 mm	6: Oil drain plug	M8 x 22
E: Base mounting	246 mm	7: Liquid injection plug	1/8" NPT
F: Suction Valve	203 mm	8: Liquid injection sensor plug	1/8" NPT
G: Suction Valve	261 mm	12: Oil return plug	1/8" NPT
H: Suction Valve	58 mm	14: Max discharge temperature sensor connection	1/8" NPT
L: Discharge valve	123 mm	16: Crankcase pressure plug	1/8" NPT
M: Discharge valve	239 mm	NP: Nameplate	
N: Discharge valve	28 mm		

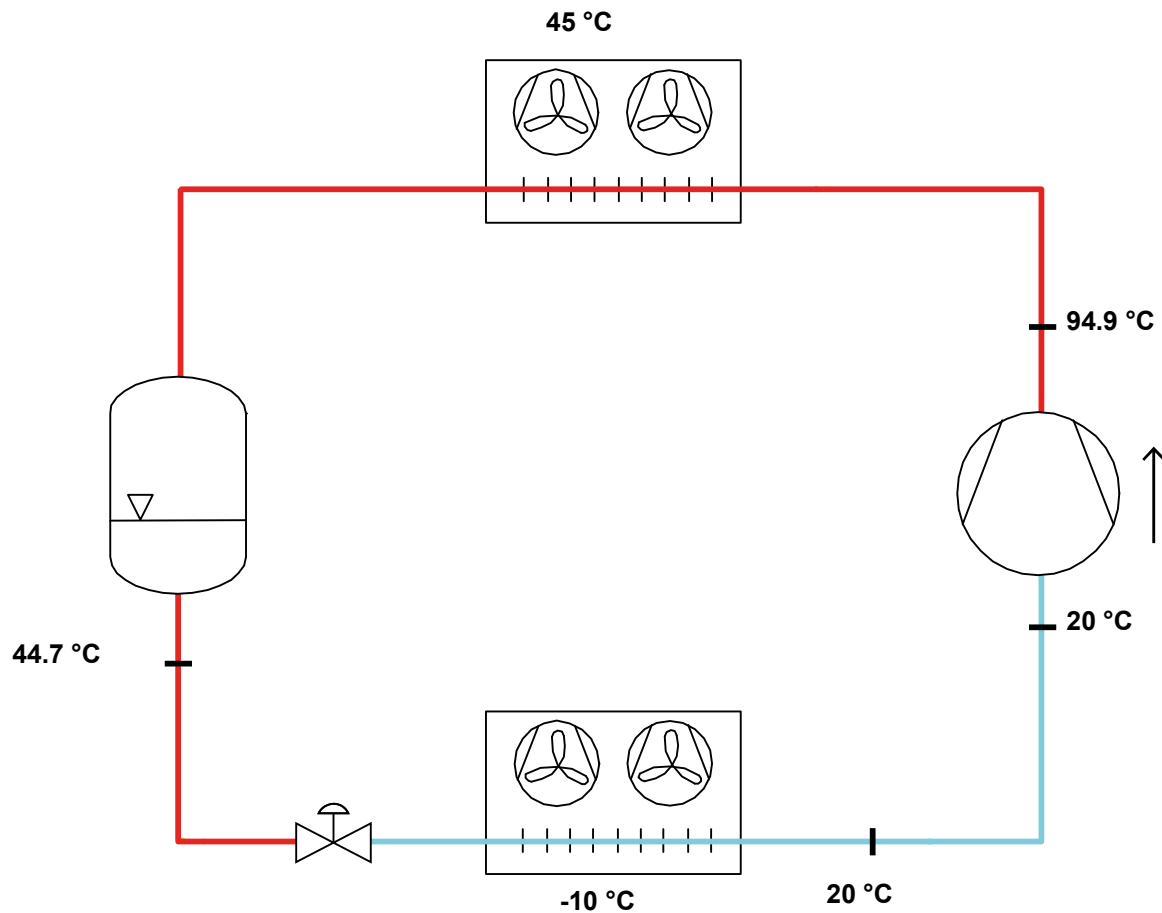
All data subject to change without notice

Model: Q7-33.1Y

Refrigerant: R404A

Power supply: 400/3/50 DOL-STAR

P&I Diagram:



Model: Q7-33.1Y

Refrigerant: R404A

Power supply: 400/3/50 DOL-STAR

Performance data:

Operating mode	Subcritical, 100 % of the capacity
Liquid subcooling	0 K
Suction gas temperature	20 °C
Useful fraction of superheating	100 %
Frequency	50 Hz
Additional cooling required	

Refrigerating capacity [kW]

T.Evap	-30 °C	-25 °C	-20 °C	-15 °C	-10 °C	-5 °C	0 °C	5 °C
T.Cond								
55 °C	-	6.442	8.304	10.442	12.91	15.762	19.053	22.835
50 °C	5.548	7.344	9.412	11.804	14.574	17.778	21.468	25.698
45 °C	6.288	8.24	10.511	13.155	16.226	19.778	23.866	28.542
40 °C	7.025	9.13	11.603	14.497	17.867	21.766	26.248	31.368
35 °C	7.762	10.018	12.69	15.832	19.498	23.741	28.617	34.178
30 °C	8.5	10.905	13.774	17.162	21.122	25.708	30.974	36.974
25 °C	9.242	11.793	14.858	18.489	22.74	27.666	33.321	39.759
20 °C	9.988	12.684	15.941	19.814	24.355	29.619	35.661	-

Power input [W]

T.Evap	-30 °C	-25 °C	-20 °C	-15 °C	-10 °C	-5 °C	0 °C	5 °C
T.Cond								
55 °C	-	5876	6662	7490	8334	9166	9958	10684
50 °C	5011	5694	6436	7210	7987	8741	9444	10070
45 °C	4895	5542	6236	6950	7657	8329	8939	9461
40 °C	4794	5401	6043	6694	7326	7912	8425	8838
35 °C	4691	5253	5839	6422	6975	7471	7883	8183
30 °C	4567	5080	5606	6117	6587	6989	7295	7478
25 °C	4404	4864	5325	5761	6144	6447	6644	6706
20 °C	4184	4586	4979	5335	5627	5828	5910	-

COP/EER [W/W]

T.Evap	-30 °C	-25 °C	-20 °C	-15 °C	-10 °C	-5 °C	0 °C	5 °C
T.Cond								
55 °C	-	1.1	1.25	1.39	1.55	1.72	1.91	2.14
50 °C	1.11	1.29	1.46	1.64	1.82	2.03	2.27	2.55
45 °C	1.28	1.49	1.69	1.89	2.12	2.37	2.67	3.02
40 °C	1.47	1.69	1.92	2.17	2.44	2.75	3.12	3.55
35 °C	1.65	1.91	2.17	2.47	2.8	3.18	3.63	4.18
30 °C	1.86	2.15	2.46	2.81	3.21	3.68	4.25	4.94
25 °C	2.1	2.42	2.79	3.21	3.7	4.29	5.02	5.93
20 °C	2.39	2.77	3.2	3.71	4.33	5.08	6.03	-

Current [A]

T.Evap	-30 °C	-25 °C	-20 °C	-15 °C	-10 °C	-5 °C	0 °C	5 °C
T.Cond								
55 °C	-	12.21	13.13	14.17	15.28	16.43	17.56	18.63
50 °C	11.29	12.01	12.86	13.81	14.82	15.84	16.82	17.73
45 °C	11.18	11.84	12.62	13.48	14.38	15.27	16.11	16.85
40 °C	11.08	11.69	12.4	13.17	13.95	14.72	15.4	15.97
35 °C	10.98	11.54	12.17	12.84	13.51	14.14	14.68	15.08
30 °C	10.86	11.36	11.91	12.49	13.04	13.53	13.92	14.15
25 °C	10.71	11.14	11.61	12.08	12.52	12.87	13.11	13.18
20 °C	10.52	10.88	11.26	11.62	11.94	12.16	12.25	-

All data subject to change without notice

Model: Q7-33.1Y

Refrigerant: R404A

Power supply: 400/3/50 DOL-STAR

Performance data:

Operating mode	Subcritical, 100 % of the capacity
Liquid subcooling	0 K
Suction gas temperature	20 °C
Useful fraction of superheating	100 %
Frequency	50 Hz
Additional cooling required	

Mass flow [kg/h]

T.Evap	-30 °C	-25 °C	-20 °C	-15 °C	-10 °C	-5 °C	0 °C	5 °C
T.Cond								
55 °C	-	221	287	365	457	566	695	850
50 °C	174	231	299	378	472	583	715	872
45 °C	183	241	309	390	486	600	734	893
40 °C	191	250	319	402	500	616	753	914
35 °C	199	258	329	413	513	631	771	934
30 °C	206	266	337	423	525	646	787	953
25 °C	213	273	346	433	537	659	803	971
20 °C	219	280	354	442	548	672	818	-