



Compressor  
Voltage Code : TZ

TAJ2464Z-TZ

Low Temp. Commercial (BP)

400V 3~ 50Hz / 440V 3~ 60 Hz

R404A

AJ2444Z-TZ1C

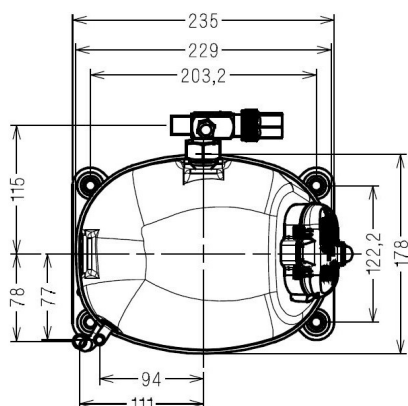
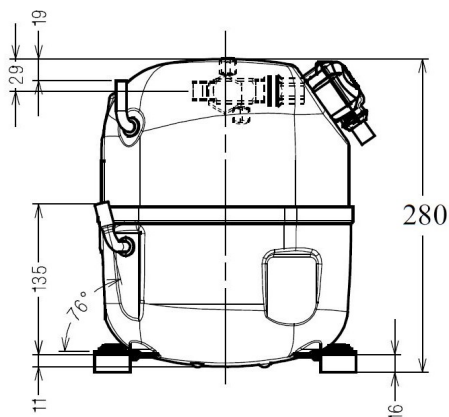
Operating conditions : **Customized... / 50 Hz / Dew**

**Sound Power**  
ISO3745 / ISO 3743-1

Evaporating Temp. : -23.3 °C  
Superheat : 10.0 K  
Return gas temp. : 3.00 °C  
Condensing Temp. : 45.0 °C  
Subcooling : 10.0 K  
Liquid : 34.7 °C

Refrig. Capacity : **1310 Watt**  
  
Power Input : 1139 Watt  
Amps : 2.18 A  
C.O.P : 1.15 Watt/W

63 dBA



Displacement (cc) 34.5  
Net Weight (Kg) 21.2  
Oil Quantity (cc) 475.0  
Oil Type Polyolester  
Expansion Device Capillary\_Tube/Expansion\_Valve  
Cooling Fan  
Main Winding (Ohm) 11.8

Current  
RLA (A) 2.2 | 2.1  
MCC (A) 3.8 | 4  
LRA (A) 15.9 | 16.3

Electrical Equipment TRI

Overload Interne

Refrigerating connection for OD

Suction Tube 15.9 (5/8")  
Discharge Tube 9.5 (3/8")  
Process Tube 6.35 (1/4")

Certificates :



Note : Tecumseh reserves the right to change information contained in this document without notification.

<b>TAJ2464Z-TZ</b>	<b>Tension TZ : 400V 3~ 50Hz / 440V 3~ 60 Hz</b>
--------------------	--

Les performances sont données dans les <b>conditions EN12900</b> :	Gaz aspirés : 20.0 °C
Condition Dew	Sous refroidissement : 0.0 K
The performance data are in <b>EN12900 conditions</b> :	Return gas : 20.0 °C
Dew Condition	Subcooling : 0.0 K

<b>50 Hz R404A</b>									
<b>N°124SU-TZ</b>									

4   T condensation	5   T évaporation	(°C)	<b>-40</b>	<b>-35</b>	<b>-30</b>	<b>-25</b>	<b>-20</b>	<b>-15</b>	<b>-10</b>
<b>30</b>	1   P frigorifique	(Watt)	752	1030	1365	1765	2234	2780	3408
	2   P absorbée	(W)	650	770	892	1015	1141	1270	1405
	3   I absorbée	(A)	1.57	1.69	1.83	1.99	2.16	2.35	2.56
<b>40</b>	1   P frigorifique	(Watt)	578	820	1108	1449	1850	2317	2855
	2   P absorbée	(W)	636	778	920	1066	1215	1369	1529
	3   I absorbée	(A)	1.56	1.71	1.88	2.07	2.28	2.50	2.74
<b>50</b>	1   P frigorifique	(Watt)		612	852	1135	1467	1854	2302
	2   P absorbée	(W)		763	930	1100	1274	1455	1642
	3   I absorbée	(A)		1.71	1.91	2.13	2.37	2.62	2.89
<b>60</b>	1   P frigorifique	(Watt)			601	825	1088	1395	1752
	2   P absorbée	(W)			918	1116	1318	1527	1744
	3   I absorbée	(A)			1.91	2.16	2.43	2.72	3.02

<b>60 Hz R404A</b>									
<b>N°124SU-TZ</b>									

4   T condensation	5   T évaporation	(°C)	<b>-40</b>	<b>-35</b>	<b>-30</b>	<b>-25</b>	<b>-20</b>	<b>-15</b>	<b>-10</b>
<b>30</b>	1   P frigorifique	(Watt)	824	1131	1502	1944	2464	3068	3764
	2   P absorbée	(W)	747	894	1037	1180	1330	1490	1667
	3   I absorbée	(A)	1.46	1.62	1.79	1.99	2.20	2.43	2.68
<b>40</b>	1   P frigorifique	(Watt)	636	900	1218	1596	2040	2558	3156
	2   P absorbée	(W)	728	901	1071	1243	1422	1613	1822
	3   I absorbée	(A)	1.45	1.63	1.84	2.07	2.31	2.58	2.86
<b>50</b>	1   P frigorifique	(Watt)		678	942	1255	1623	2053	2553
	2   P absorbée	(W)		870	1068	1269	1478	1700	1942
	3   I absorbée	(A)		1.62	1.86	2.12	2.40	2.70	3.02
<b>60</b>	1   P frigorifique	(Watt)			675	922	1213	1556	1956
	2   P absorbée	(W)			1050	1281	1521	1776	2051
	3   I absorbée	(A)			1.85	2.14	2.46	2.79	3.14

1 = cooling capacity 2 = power input 3 = current 4 = condensing temperature 5 = evaporating temperature
---

<p><b>Nota : Tecumseh se réserve le droit de modifier les informations contenues dans ce document sans préavis.</b></p> <p><b>Note : Tecumseh reserves the right to change information contained in this document without notification.</b></p>
---