



Compressor
Voltage Code : FZ

FH2480Z

Low Temp. Commercial (BP)

220 - 240V 1~ 50 Hz

R404A

AHC2466ZFZ

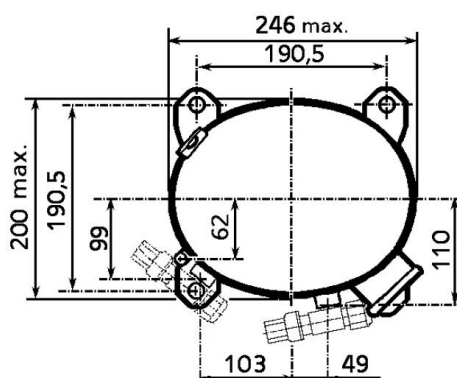
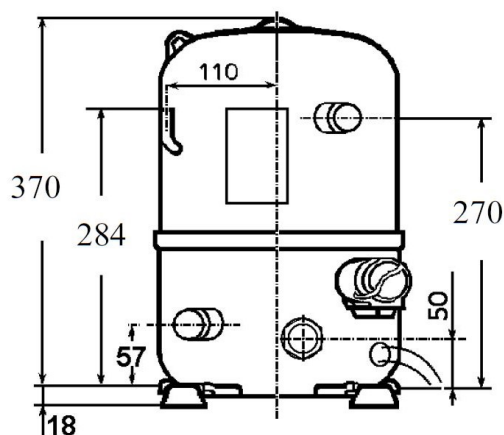
Operating conditions : **Customized... / 50 Hz / Dew**

Sound Power
ISO3745 / ISO 3743-1

Evaporating Temp. : -23.3 °C
Superheat : 10.0 K
Return gas temp. : 3.00 °C
Condensing Temp. : 45.0 °C
Subcooling : 10.0 K
Liquid : 34.7 °C

Refrig. Capacity : 1955 Watt
Power Input : 1741 Watt
Amps : 7.81 A
C.O.P : 1.12 Watt/W

71 dBA



Displacement (cc) 53.2
Net Weight (Kg) 37.0
Oil Quantity (cc) 1330.0
Oil Type Polyolester
Expansion Device Capillary_Tube/Expansion_Valve
Cooling Fan
Main Winding (Ohm) 0.95
Start Winding (Ohm) 4.4

Current
RLA (A) 7.2
MCC (A) 16
LRA (A) 68

Electrical Equipment CSR

Overload Interne
Start Capacitor 156 µF / 330 V
Run Capacitor 25 µF / 400 V

Potential Relay RVA4Q**
Pick Up 318/347V
Drop Out 60/121V
Optional 3ARR3*6AE*

Refrigerating connection for OD
Suction Tube 15.9 (5/8")
Discharge Tube 12.7 (1/2")
Process Tube 6.35 (1/4")

Certificates :



Note : Tecumseh reserves the right to change information contained in this document without notification.

FH2480Z	Tension FZ : 220 - 240V 1~ 50 Hz
----------------	---

Les performances sont données dans les conditions EN12900 :	Gaz aspirés : 20.0 °C
Condition Dew	Sous refroidissement : 0.0 K
The performance data are in EN12900 conditions :	Return gas : 20.0 °C
Dew Condition	Subcooling : 0.0 K

50 Hz R404A									
N°126GT-F									
4 T condensation	5 T évaporation	(°C)	-40	-35	-30	-25	-20	-15	-10
30	1 P frigorifique	(Watt)	1028	1487	2024	2648	3369	4196	5138
	2 P absorbée	(W)	1031	1223	1416	1611	1810	2014	2223
	3 I absorbée	(A)	4.87	5.67	6.50	7.34	8.21	9.11	10.0
40	1 P frigorifique	(Watt)	698	1123	1610	2167	2805	3532	4357
	2 P absorbée	(W)	976	1197	1422	1652	1887	2130	2382
	3 I absorbée	(A)	4.40	5.39	6.41	7.44	8.50	9.59	10.7
50	1 P frigorifique	(Watt)		738	1167	1651	2199	2819	3521
	2 P absorbée	(W)		1128	1384	1648	1920	2202	2495
	3 I absorbée	(A)		4.93	6.13	7.36	8.61	9.88	11.2
60	1 P frigorifique	(Watt)			716	1120	1570	2077	2649
	2 P absorbée	(W)			1307	1604	1913	2233	2568
	3 I absorbée	(A)			5.66	7.08	8.52	9.98	11.5

1 = cooling capacity 2 = power input 3 = current 4 = condensing temperature 5 = evaporating temperature

Nota : Tecumseh se réserve le droit de modifier les informations contenues dans ce document sans préavis.

Note : Tecumseh reserves the right to change information contained in this document without notification.