



# Compressor

Voltage Code : FZ

# AE4440Z-FZ1A

High Temp. Commercial (HP)

220 - 240V 1~ 50 Hz

R404A

AE4440Z-FZ1A\_BR

Operating conditions : **Customized... / 50 Hz / Dew**

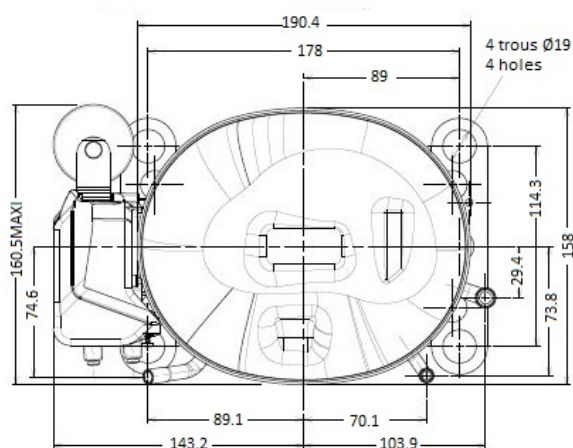
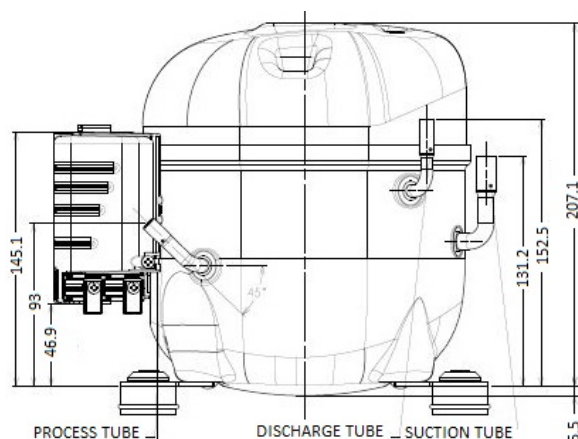
**Sound Power**  
ISO3745 / ISO 3743-1

Evaporating Temp. : -10.0 °C  
Superheat : 10.0 K  
Return gas temp. : 10.0 °C  
Condensing Temp. : 45.0 °C  
Subcooling : 10.0 K  
Liquid : 34.7 °C

Refrig. Capacity : **549 Watt**

Power Input : 341 Watt  
Amps : 2.36 A  
C.O.P : 1.61 Watt/W

57 dBA



Displacement (cc) 6.69  
Net Weight (Kg) 10.2  
Oil Quantity (cc) 280.0  
Oil Type Polyolester  
Expansion Device Capillary\_Tube/Expansion\_Valve  
Cooling Fan  
Main Winding (Ohm) 6.79  
Start Winding (Ohm) 18.0

Current  
RLA (A) 2.74  
LRA (A) 16.0

Electrical Equipment CSIR

Overload T1411  
Time Check 6.5s - 16s / 10.00 A  
Open Temp 140° C  
Close Temp 52° C

Start Capacitor 108 µF / 330 V

Current Relay RP45\*\*  
Pick Up 6.75A  
Drop Out 5.7A

Refrigerating connection for OD  
Suction Tube 9.5 (3/8")  
Discharge Tube 6.35 (1/4")  
Process Tube 6.35 (1/4")

Certificates :



Note : Tecumseh reserves the right to change information contained in this document without notification.

<b>AE4440Z-FZ1A</b>	<b>Tension FZ : 220 - 240V 1~ 50 Hz</b>
---------------------	-----------------------------------------

Les performances sont données dans les <b>conditions EN12900</b> :	Gaz aspirés : 20.0 °C
Condition Dew	Sous refroidissement : 0.0 K
The performance data are in <b>EN12900 conditions</b> :	Return gas : 20.0 °C
Dew Condition	Subcooling : 0.0 K

50 Hz R404A											
N°3067											
4   T condensation	5   T évaporation	(°C)	-25	-20	-15	-10	-5	0	5	10	15
<b>30</b>	1   P frigorifique	(Watt)	352	454	575	718	887	1084	1313	1575	1873
	2   P absorbée	(W)	241	262	281	297	309	317	321	318	310
	3   I absorbée	(A)	2.11	2.16	2.21	2.25	2.28	2.30	2.31	2.31	2.30
<b>40</b>	1   P frigorifique	(Watt)	284	375	481	604	747	914	1105	1326	1577
	2   P absorbée	(W)	251	278	304	327	347	364	376	384	386
	3   I absorbée	(A)	2.08	2.17	2.25	2.32	2.38	2.44	2.48	2.51	2.54
<b>50</b>	1   P frigorifique	(Watt)		293	383	486	603	737	892	1071	1275
	2   P absorbée	(W)		292	324	354	382	407	428	445	458
	3   I absorbée	(A)		2.18	2.29	2.40	2.49	2.57	2.65	2.71	2.77
<b>60</b>	1   P frigorifique	(Watt)			282	363	454	557	675	810	967
	2   P absorbée	(W)			342	379	415	448	478	505	527
	3   I absorbée	(A)			2.34	2.47	2.59	2.71	2.82	2.91	3.00

--	--	--	--	--	--	--	--	--	--	--	--

1 = cooling capacity 2 = power input 3 = current 4 = condensing temperature 5 = evaporating temperature
---------------------------------------------------------------------------------------------------------

<p><b>Nota : Tecumseh se réserve le droit de modifier les informations contenues dans ce document sans préavis.</b></p> <p><b>Note : Tecumseh reserves the right to change information contained in this document without notification.</b></p>
-------------------------------------------------------------------------------------------------------------------------------------------------------------------------------------------------------------------------------------------------