



Compressor

Voltage Code : FZ

AE4456Y-FZ1C

High Temp. Commercial (HP)

220 - 240V 1~ 50 Hz

R134a

AE4456Y-FZ1C_BF

Operating conditions : **Customized... / 50 Hz / Dew**

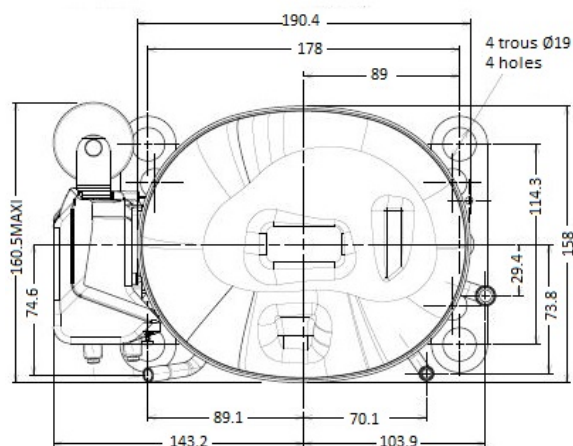
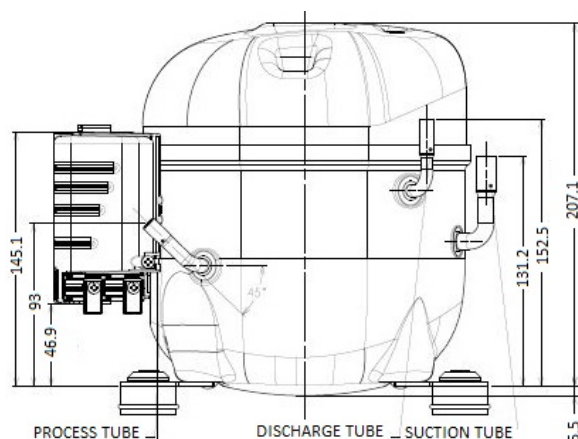
Sound Power
ISO3745 / ISO 3743-1

Evaporating Temp. : -10.0 °C
Superheat : 10.0 K
Return gas temp. : 10.0 °C
Condensing Temp. : 45.0 °C
Subcooling : 10.0 K
Liquid : 34.7 °C

Refrig. Capacity : 741 Watt

Power Input : 424 Watt
Amps : 2.87 A
C.O.P : 1.75 Watt/W

60 dBA



Displacement (cc) 14.51
Net Weight (Kg) 11.5
Oil Quantity (cc) 380.0
Oil Type Polyolester
Expansion Device Capillary_Tube/Expansion_Valve
Cooling Fan
Main Winding (Ohm) 4.05
Start Winding (Ohm) 22.8

Current
RLA (A) 3.6
LRA (A) 17.5

Electrical Equipment CSIR

Overload T0617
Time Check 2.8s - 5.2s / 20.5 A
Open Temp 140° C
Close Temp 52° C

Start Capacitor 64 µF / 250 V

Current Relay MTRP0030
Pick Up 9,15A
Drop Out 7,7A

Refrigerating connection for OD
Suction Tube 9.5 (3/8")
Discharge Tube 6.35 (1/4")
Process Tube 6.35 (1/4")

Certificates :



Note : Tecumseh reserves the right to change information contained in this document without notification.

AE4456Y-FZ1C	Tension FZ : 220 - 240V 1~ 50 Hz
---------------------	---

Les performances sont données dans les conditions EN12900 :	Gaz aspirés : 20.0 °C
Condition Dew	Sous refroidissement : 0.0 K
The performance data are in EN12900 conditions :	Return gas : 20.0 °C
Dew Condition	Subcooling : 0.0 K

50 Hz R134a											
N°3102											
4 T condensation	5 T évaporation	(°C)	-25	-20	-15	-10	-5	0	5	10	15
30	1 P frigorifique	(Watt)	420	554	712	897	1114	1366	1659	1997	2383
	2 P absorbée	(W)	275	307	337	367	397	429	464	502	544
	3 I absorbée	(A)	2.55	2.60	2.66	2.73	2.82	2.91	3.02	3.14	3.27
40	1 P frigorifique	(Watt)	353	479	624	792	987	1214	1476	1779	2125
	2 P absorbée	(W)	288	329	368	406	443	481	521	563	609
	3 I absorbée	(A)	2.50	2.60	2.70	2.82	2.95	3.09	3.24	3.41	3.58
50	1 P frigorifique	(Watt)		404	534	682	854	1052	1282	1547	1853
	2 P absorbée	(W)		345	394	442	489	535	583	632	684
	3 I absorbée	(A)		2.62	2.77	2.93	3.10	3.29	3.48	3.69	3.91
60	1 P frigorifique	(Watt)			447	574	720	888	1083	1310	1571
	2 P absorbée	(W)			416	476	534	592	649	708	769
	3 I absorbée	(A)			2.85	3.05	3.27	3.50	3.74	4.00	4.26

--	--	--	--	--	--	--	--	--	--	--	--

1 = cooling capacity 2 = power input 3 = current 4 = condensing temperature 5 = evaporating temperature

<p>Nota : Tecumseh se réserve le droit de modifier les informations contenues dans ce document sans préavis.</p> <p>Note : Tecumseh reserves the right to change information contained in this document without notification.</p>
