



Compressor

Voltage Code : FZ

CAJ4517Z-FZ

High Temp. Commercial (HP)

220 - 240V 1~ 50 Hz

R404A

AJ4517Z-FZ3C

Operating conditions : **Customized... / 50 Hz / Dew**

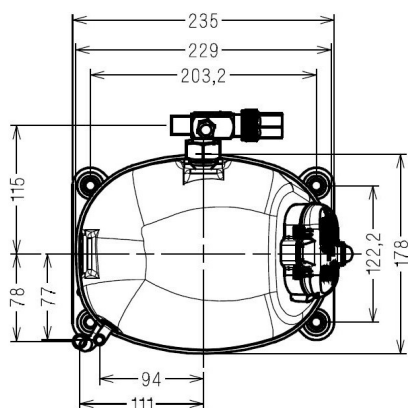
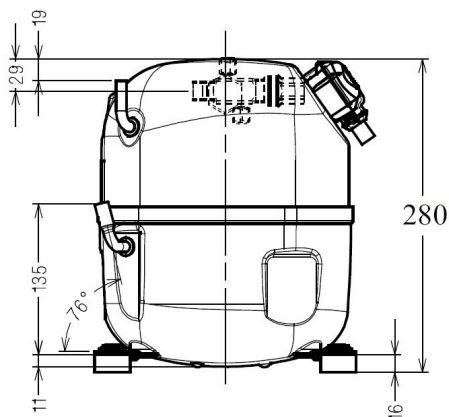
Sound Power
ISO3745 / ISO 3743-1

Evaporating Temp. : -10.0 °C
Superheat : 10.0 K
Return gas temp. : 10.0 °C
Condensing Temp. : 45.0 °C
Subcooling : 10.0 K
Liquid : 34.7 °C

Refrig. Capacity : **2084 Watt**

Power Input : 1122 Watt
Amps : 5.68 A
C.O.P : 1.86 Watt/W

64 dBA



Displacement (cc) 25.95
Net Weight (Kg) 21.6
Oil Quantity (cc) 475.0
Oil Type Polyolester
Expansion Device Capillary_Tube/Expansion_Valve
Cooling Fan
Main Winding (Ohm) 1.7
Start Winding (Ohm) 6.8

Current
RLA (A) 7.3
MCC (A) 12.7
LRA (A) 39

Electrical Equipment CSR

Overload MST00AGZ
Time Check 2.8s - 5.2s / 32.5 A
Open Temp 120° C
Close Temp 61° C
Optional T0861

Start Capacitor 100 µF / 330 V
Run Capacitor 17.5 µF / 400 V

Potential Relay RVA4AP**
Pick Up 300/328V
Drop Out 60/121V

Refrigerating connection for OD
Suction Tube 15.9 (5/8")
Discharge Tube 9.5 (3/8")
Process Tube 6.35 (1/4")

Certificates :



Note : Tecumseh reserves the right to change information contained in this document without notification.

CAJ4517Z-FZ	Tension FZ : 220 - 240V 1~ 50 Hz
--------------------	---

Les performances sont données dans les conditions EN12900 :	Gaz aspirés : 20.0 °C
Condition Dew	Sous refroidissement : 0.0 K
The performance data are in EN12900 conditions :	Return gas : 20.0 °C
Dew Condition	Subcooling : 0.0 K

50 Hz R404A											
N°224LT-FZ											
4 T condensation	5 T évaporation	(°C)	-25	-20	-15	-10	-5	0	5	10	15
30	1 P frigorifique	(Watt)	1393	1782	2241	2779	3406	4133	4968	5923	7007
	2 P absorbée	(W)	762	840	912	980	1047	1114	1185	1261	1344
	3 I absorbée	(A)	4.08	4.37	4.64	4.91	5.16	5.41	5.65	5.87	6.09
40	1 P frigorifique	(Watt)	1098	1448	1848	2308	2839	3449	4150	4950	5860
	2 P absorbée	(W)	789	893	990	1080	1166	1251	1336	1425	1518
	3 I absorbée	(A)	4.26	4.68	5.08	5.48	5.86	6.23	6.60	6.95	7.30
50	1 P frigorifique	(Watt)		1107	1448	1830	2263	2757	3322	3967	4703
	2 P absorbée	(W)		914	1040	1158	1270	1378	1485	1592	1702
	3 I absorbée	(A)		4.77	5.30	5.82	6.33	6.83	7.33	7.81	8.28
60	1 P frigorifique	(Watt)			1044	1347	1682	2059	2488	2978	3539
	2 P absorbée	(W)			1059	1211	1355	1493	1626	1758	1890
	3 I absorbée	(A)			5.29	5.94	6.58	7.21	7.83	8.44	9.04

--	--	--	--	--	--	--	--	--	--	--	--

1 = cooling capacity 2 = power input 3 = current 4 = condensing temperature 5 = evaporating temperature

<p>Nota : Tecumseh se réserve le droit de modifier les informations contenues dans ce document sans préavis.</p> <p>Note : Tecumseh reserves the right to change information contained in this document without notification.</p>
