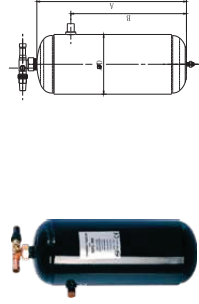
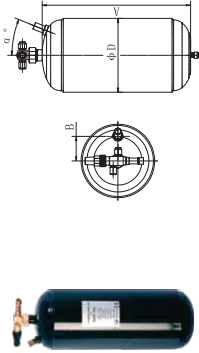
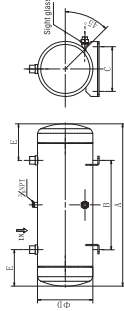


Vertical Receiver



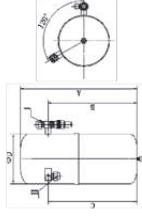
Part No.	Volume(L)	ODF	A(mm)	B(mm)	D(mm)	°C
RSFC-133	1.1	3/8	170	35	102	18.2°
RSFC-166	1.6	3/8	192	40	114	22.3°
RSFC-233	2	3/8	185	42	127	20°
RSFC-333	3	3/8	293	42	127	20°
RSFC-433	4	3/8	288	55	165	21°
RSFC-644	6	1/2	332	55	165	21°
RSFC-844	8	1/2	432	55	165	21°
RSFC-855	8	5/8	432	55	165	21°
RSFC-1055	10	5/8	322	75	219	17°
RSFC-1255	12	5/8	380	75	219	17°
RSFC-1455	14	5/8	435	75	219	17°
RSFC-1466	14	3/4	435	75	219	17°
RSFC-1677	16	7/8	492	75	219	17°
RSFC-1877	18	7/8	549	75	219	17°
RSFC-2077	20	7/8	606	75	219	17°

Horizontal Receiver



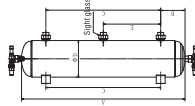
Part No.	Inlet & Outlet	A(mm)	B(mm)	C(mm)	D(mm)	E(mm)
30L	1-1/8	900	600	190	219	150
35L	1-1/8	1000	700	190	219	150
40L	1-3/8	800	440	220	273	180
45L	1-3/8	900	540	220	273	180
50L	1-5/8	1000	640	220	273	180
55L	1-5/8	1100	740	220	273	180
60L	2-1/8	1200	840	220	273	180

Part No.	Volume(L)	ODF	A(mm)	B(mm)	D(mm)
RSFC-101	1.0	3/8	200	132	89
RSFC-102	2.9	3/8	258	181	127
RSFC-103	3.2	3/8	290	203	127
RSFC-104	6.2	1/2	348	257	165
RSFC-105	7.5	5/8	414	320	165
RSFC-106	11.2	3/4	600	495	165
RSFC-107	13.2	7/8	700	585	165



Part No.	Volume(L)	SAE	A(mm)	B(mm)	C(mm)	D(mm)
RSFC-101	1.1	1/4, 3/8	218	136	136	89
RSFC-102	2.9	3/8, 3/8	245	160	160	130
RSFC-103	3.5	3/8, 3/8	298	208	208	130
RSFC-104	6.0	1/2, 1/2	360	275	275	152
RSFC-105	9.6	5/8, 5/8	412	275	322	180

Vertical Receiver



Part No.	Volume(L)	Inlet & Outlet	A(mm)	B(mm)	C(mm)	D(mm)	E(mm)
RSFOR-6	6	3/8	338	94	150	165	--
RSFOR-8	8	3/8	438	109	220	165	--
RSFOR-10	10	3/8	548	131	285	165	--
RSFOR-12	12	3/8	638	139	360	165	--
RSFOR-14	14	1/2	738	110	518	165	259
RSFOR-19	19	1/2	580	140	300	219	--
RSFOR-23	23	5/8	700	140	420	219	210