



Compressor  
Voltage Code : FZ

CAJ2464Z-FZ

Low Temp. Commercial (BP)

220 - 240V 1~ 50 Hz

R404A

AJ2444Z-FZ3C

Operating conditions : **Customized... / 50 Hz / Dew**

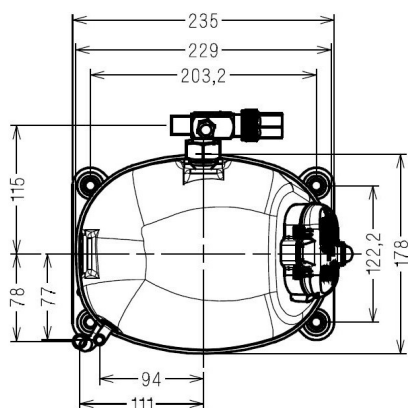
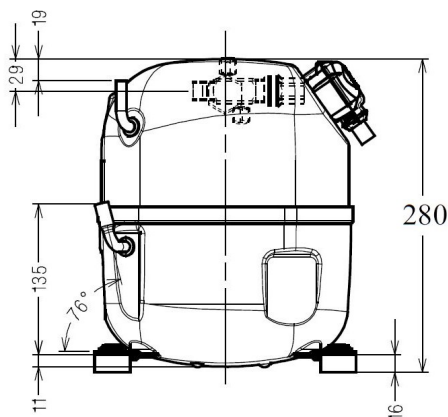
**Sound Power**  
ISO3745 / ISO 3743-1

Evaporating Temp. : -23.3 °C  
Superheat : 10.0 K  
Return gas temp. : 3.00 °C  
Condensing Temp. : 45.0 °C  
Subcooling : 10.0 K  
Liquid : 34.7 °C

Refrig. Capacity : 1321 Watt

Power Input : 1186 Watt  
Amps : 5.94 A  
C.O.P : 1.11 Watt/W

61 dBA



Displacement (cc) 34.5  
Net Weight (Kg) 22.2  
Oil Quantity (cc) 475.0  
Oil Type Polyolester  
Expansion Device Capillary\_Tube/Expansion\_Valve  
Cooling Fan  
Main Winding (Ohm) 1.6  
Start Winding (Ohm) 6.5

Current  
RLA (A) 5.7  
MCC (A) 10  
LRA (A) 40

Electrical Equipment CSR

Overload MST16AFZ  
Time Check 2.8s - 5.2s / 38 A  
Open Temp 120° C  
Close Temp 61° C

Start Capacitor 88 µF / 330 V  
Run Capacitor 20 µF / 400 V

Potential Relay RVA6M\*\*  
Pick Up 239/268V  
Drop Out 60/135V  
Optional 3ARR3\*4AA\*

Refrigerating connection for OD  
Suction Tube 15.9 (5/8")  
Discharge Tube 9.5 (3/8")  
Process Tube 6.35 (1/4")

Certificates :



Note : Tecumseh reserves the right to change information contained in this document without notification.



**Tecumseh**

**CAJ2464Z-FZ**

**Tension FZ : 220 - 240V 1~ 50 Hz**

Les performances sont données dans les **conditions EN12900** :

Condition Dew

Gaz aspirés : 20.0 °C

Sous refroidissement : 0.0 K

The performance data are in **EN12900 conditions** :

Dew Condition

Return gas : 20.0 °C

Subcooling : 0.0 K

**50 Hz R404A**



**N°124ST-FZ**

| 4   T condensation | 5   T évaporation  | (°C)   | <b>-40</b> | <b>-35</b> | <b>-30</b> | <b>-25</b> | <b>-20</b> | <b>-15</b> | <b>-10</b> |
|--------------------|--------------------|--------|------------|------------|------------|------------|------------|------------|------------|
| <b>30</b>          | 1   P frigorifique | (Watt) | 760        | 1036       | 1371       | 1772       | 2243       | 2792       | 3425       |
|                    | 2   P absorbée     | (W)    | 723        | 835        | 948        | 1061       | 1176       | 1293       | 1411       |
|                    | 3   I absorbée     | (A)    | 4.13       | 4.50       | 4.91       | 5.37       | 5.87       | 6.43       | 7.03       |
| <b>40</b>          | 1   P frigorifique | (Watt) | 589        | 828        | 1116       | 1459       | 1864       | 2336       | 2882       |
|                    | 2   P absorbée     | (W)    | 714        | 845        | 979        | 1116       | 1257       | 1401       | 1550       |
|                    | 3   I absorbée     | (A)    | 4.08       | 4.55       | 5.06       | 5.62       | 6.22       | 6.88       | 7.58       |
| <b>50</b>          | 1   P frigorifique | (Watt) |            | 623        | 862        | 1146       | 1482       | 1876       | 2334       |
|                    | 2   P absorbée     | (W)    |            | 833        | 988        | 1149       | 1315       | 1487       | 1666       |
|                    | 3   I absorbée     | (A)    |            | 4.54       | 5.15       | 5.81       | 6.51       | 7.27       | 8.07       |
| <b>60</b>          | 1   P frigorifique | (Watt) |            |            | 613        | 837        | 1103       | 1416       | 1785       |
|                    | 2   P absorbée     | (W)    |            |            | 979        | 1162       | 1354       | 1554       | 1763       |
|                    | 3   I absorbée     | (A)    |            |            | 5.18       | 5.94       | 6.74       | 7.60       | 8.50       |

© 2020 Tecumseh Products Company  
All rights reserved

1 = cooling capacity 2 = power input 3 = current 4 = condensing temperature 5 = evaporating temperature

**Nota : Tecumseh se réserve le droit de modifier les informations contenues dans ce document sans préavis.**

**Note : Tecumseh reserves the right to change information contained in this document without notification.**