



Compressor  
Voltage Code : TZ

TFH4540Z

High Temp. Commercial (HP)

400V 3~ 50Hz / 440V 3~ 60 Hz

R404A

AHC4540ZTZ

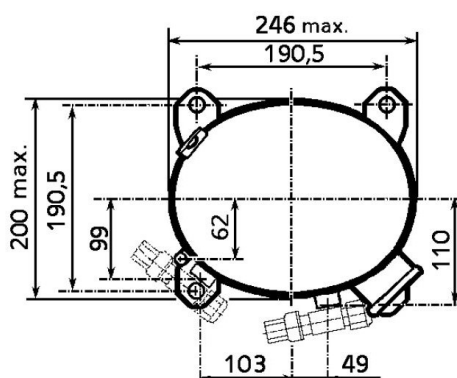
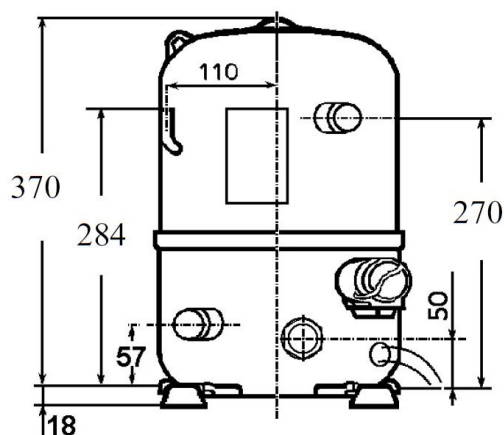
Operating conditions : **Customized... / 50 Hz / Dew**

**Sound Power**  
ISO3745 / ISO 3743-1

Evaporating Temp. : -10.0 °C  
Superheat : 10.0 K  
Return gas temp. : 10.0 °C  
Condensing Temp. : 45.0 °C  
Subcooling : 10.0 K  
Liquid : 34.7 °C

Refrig. Capacity : **5209 Watt**  
  
Power Input : 2891 Watt  
Amps : 6.41 A  
C.O.P : 1.80 Watt/W

79 dBA



Displacement (cc) 74.2  
Net Weight (Kg) 33.0  
Oil Quantity (cc) 1330.0  
Oil Type Polyolester  
Expansion Device Capillary\_Tube/Expansion\_Valve  
Cooling Fan  
Main Winding (Ohm) 3.3

Current  
RLA (A) 7.5 | 7.7  
MCC (A) 9.2 | 10.1  
LRA (A) 44 | 46

Electrical Equipment TRI

Overload Interne

Refrigerating connection for OD

Suction Tube 22.2 (7/8")  
Discharge Tube 12.7 (1/2")  
Process Tube 6.35 (1/4")

Certificates :



Note : Tecumseh reserves the right to change information contained in this document without notification.

<b>TFH4540Z</b>	<b>Tension TZ : 400V 3~ 50Hz / 440V 3~ 60 Hz</b>
-----------------	--

Les performances sont données dans les **conditions EN12900** :  
Condition Dew

Gaz aspirés : 20.0 °C  
Sous refroidissement : 0.0 K

The performance data are in **EN12900 conditions** :  
Dew Condition

Return gas : 20.0 °C  
Subcooling : 0.0 K

## 50 Hz R404A

**N°226LU-T**

4   T condensation	5   T évaporation	(°C)	-25	-20	-15	-10	-5	0	5	10	15
<b>30</b>	1   P frigorifique	(Watt)	3345	4390	5591	6975	8566	10389	12471	14835	17508
	2   P absorbée	(W)	1957	2199	2437	2678	2931	3205	3508	3848	4235
	3   I absorbée	(A)	5.52	5.73	5.96	6.22	6.51	6.83	7.18	7.56	7.97
<b>40</b>	1   P frigorifique	(Watt)	2518	3489	4570	5784	7157	8715	10482	12484	14746
	2   P absorbée	(W)	1980	2275	2555	2830	3107	3396	3704	4041	4415
	3   I absorbée	(A)	5.54	5.79	6.06	6.37	6.70	7.07	7.46	7.89	8.35
<b>50</b>	1   P frigorifique	(Watt)		2548	3507	4551	5707	6998	8451	10090	11942
	2   P absorbée	(W)		2288	2622	2940	3251	3565	3888	4231	4601
	3   I absorbée	(A)		5.77	6.09	6.44	6.82	7.23	7.67	8.14	8.64
<b>60</b>	1   P frigorifique	(Watt)			2405	3280	4217	5242	6381	7657	9098
	2   P absorbée	(W)			2630	3001	3356	3704	4053	4412	4788
	3   I absorbée	(A)			6.04	6.43	6.86	7.31	7.80	8.31	8.86

## 60 Hz R404A

**N°226LU-T**

4   T condensation	5   T évaporation	(°C)	-25	-20	-15	-10	-5	0	5	10	15
<b>30</b>	1   P frigorifique	(Watt)	4278	5390	6695	8222	10000	12057	14423	17126	20196
	2   P absorbée	(W)	2324	2657	2930	3208	3554	4033	4709	5646	6908
	3   I absorbée	(A)	4.89	5.21	5.53	5.88	6.24	6.61	7.00	7.41	7.84
<b>40</b>	1   P frigorifique	(Watt)	3250	4289	5478	6847	8423	10235	12313	14685	17380
	2   P absorbée	(W)	2108	2631	3026	3356	3685	4078	4599	5311	6279
	3   I absorbée	(A)	4.82	5.21	5.60	6.02	6.45	6.90	7.36	7.84	8.34
<b>50</b>	1   P frigorifique	(Watt)		3076	4129	5317	6670	8217	9986	12006	14306
	2   P absorbée	(W)		2257	2873	3355	3767	4174	4639	5227	6001
	3   I absorbée	(A)		5.11	5.58	6.06	6.57	7.09	7.62	8.17	8.74
<b>60</b>	1   P frigorifique	(Watt)			2687	3675	4784	6043	7482	9128	11012
	2   P absorbée	(W)			2420	3154	3749	4269	4778	5341	6021
	3   I absorbée	(A)			5.45	6.01	6.59	7.18	7.78	8.40	9.04

1 = cooling capacity 2 = power input 3 = current 4 = condensing temperature 5 = evaporating temperature

**Nota : Tecumseh se réserve le droit de modifier les informations contenues dans ce document sans préavis.**

**Note : Tecumseh reserves the right to change information contained in this document without notification.**