



Compressor
Voltage Code : FZ

FH4531Z

High Temp. Commercial (HP)

220 - 240V 1~ 50 Hz

R404A

AHC4531ZFZ

Operating conditions : **Customized... / 50 Hz / Dew**

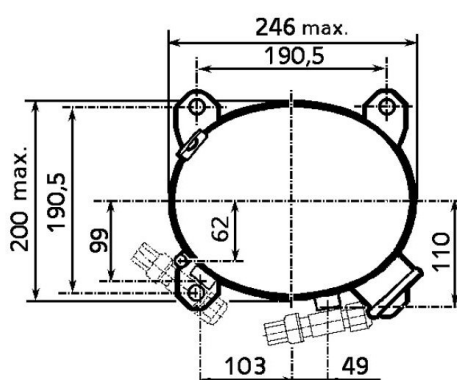
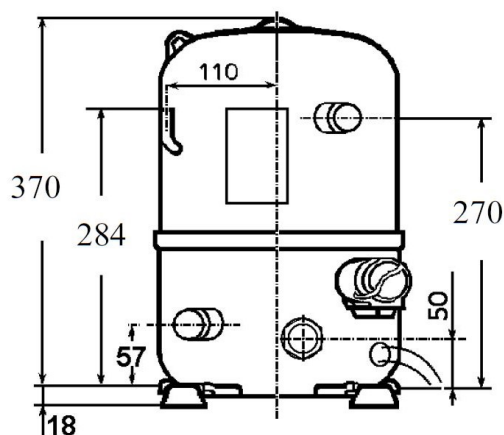
Sound Power
ISO3745 / ISO 3743-1

Evaporating Temp. : -10.0 °C
Superheat : 10.0 K
Return gas temp. : 10.0 °C
Condensing Temp. : 45.0 °C
Subcooling : 10.0 K
Liquid : 34.7 °C

Refrig. Capacity : **4071 Watt**

Power Input : 2243 Watt
Amps : 9.78 A
C.O.P : 1.81 Watt/W

75 dBA



Displacement (cc) 56.6
Net Weight (Kg) 36.0
Oil Quantity (cc) 1330.0
Oil Type Polyolester
Expansion Device Capillary_Tube/Expansion_Valve
Cooling Fan
Main Winding (Ohm) 0.9
Start Winding (Ohm) 3.2

Current
RLA (A) 14.1
MCC (A) 22.4
LRA (A) 66

Electrical Equipment CSR

Overload Interne
Start Capacitor 156 µF / 330 V
Run Capacitor 35 µF / 400 V

Potential Relay RVA6M**
Pick Up 239/268V
Drop Out 60/135V
Optional 3ARR3*4AA*

Refrigerating connection for OD
Suction Tube 22.2 (7/8")
Discharge Tube 12.7 (1/2")
Process Tube 6.35 (1/4")

Certificates :



Note : Tecumseh reserves the right to change information contained in this document without notification.

FH4531Z

Tension FZ : 220 - 240V 1~ 50 Hz

Les performances sont données dans les **conditions EN12900** :
Condition Dew

Gaz aspirés : 20.0 °C
Sous refroidissement : 0.0 K

The performance data are in **EN12900 conditions** :
Dew Condition

Return gas : 20.0 °C
Subcooling : 0.0 K

50 Hz R404A



N°226JT-F

4 T condensation	5 T évaporation	(°C)	-25	-20	-15	-10	-5	0	5	10	15
30	1 P frigorifique	(Watt)	2415	3444	4498	5616	6841	8214	9774	11564	13623
	2 P absorbée	(W)	1450	1716	1925	2093	2239	2377	2526	2703	2924
	3 I absorbée	(A)	6.48	7.51	8.43	9.26	9.99	10.6	11.1	11.6	11.9
40	1 P frigorifique	(Watt)	1367	2456	3517	4590	5716	6937	8292	9823	11570
	2 P absorbée	(W)	1252	1645	1960	2215	2427	2611	2786	2968	3174
	3 I absorbée	(A)	6.00	7.33	8.56	9.68	10.7	11.6	12.5	13.2	13.8
50	1 P frigorifique	(Watt)		1380	2449	3477	4505	5573	6724	7997	9433
	2 P absorbée	(W)		1427	1876	2244	2548	2806	3033	3247	3465
	3 I absorbée	(A)		6.84	8.37	9.80	11.1	12.3	13.5	14.5	15.4
60	1 P frigorifique	(Watt)			1324	2308	3238	4156	5103	6118	7244
	2 P absorbée	(W)			1646	2155	2579	2936	3243	3517	3774
	3 I absorbée	(A)			7.88	9.61	11.2	12.8	14.2	15.5	16.7

© 2019 Tecumseh Products Company
All rights reserved

1 = cooling capacity 2 = power input 3 = current 4 = condensing temperature 5 = evaporating temperature

Nota : Tecumseh se réserve le droit de modifier les informations contenues dans ce document sans préavis.

Note : Tecumseh reserves the right to change information contained in this document without notification.