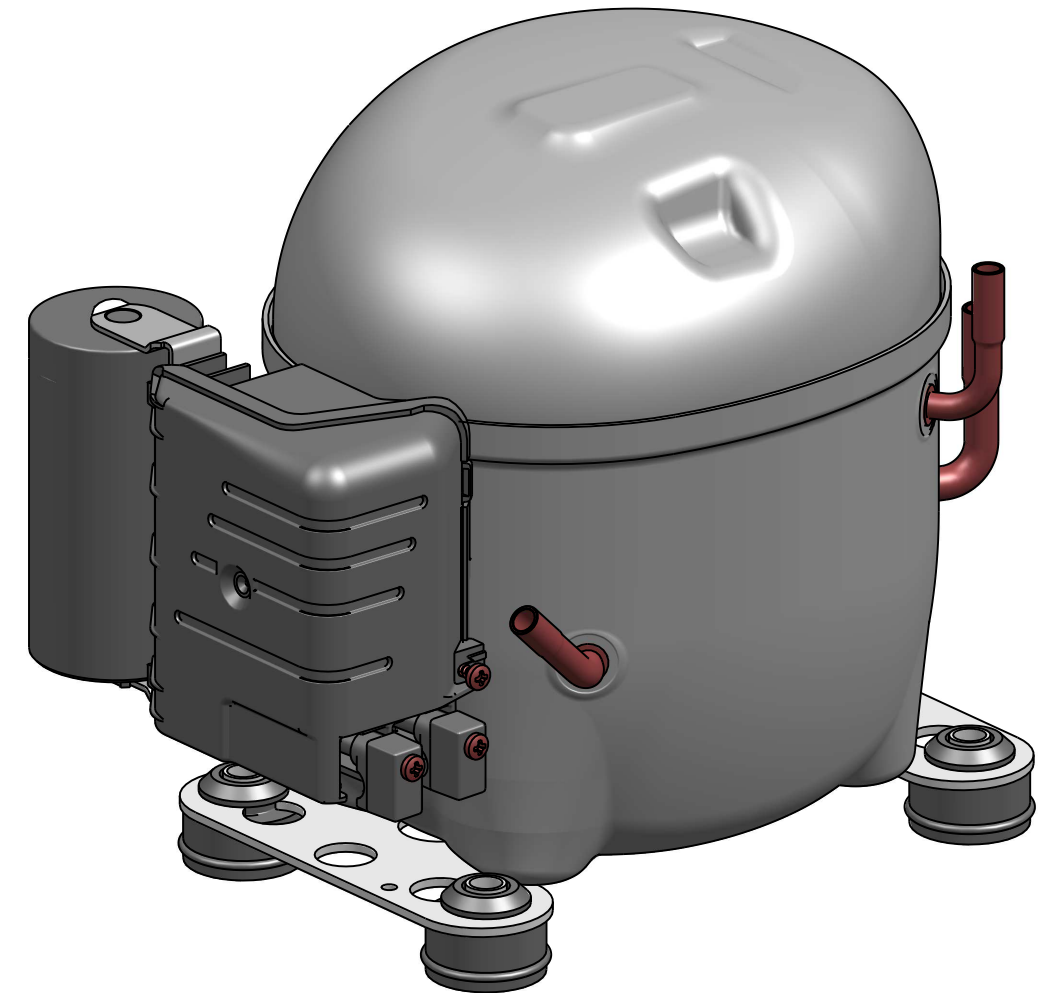
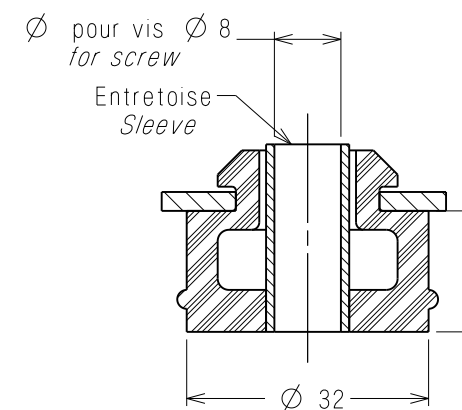


TUBE DE CHARGE  
 $\varnothing$  int.  $6,5 \pm 0,05$  sur  $16 \pm 1$  mm  
PROCESS TUBE  
Gage I.D. to 6,45-6,55  
x 15-17 deep

TUBE REFOULEMENT  
 $\varnothing$  int.  $6,5 \pm 0,05$  sur  $16 \pm 1$  mm  
DISCHARGE TUBE  
Gage I.D. to 6,45-6,55  
x 15-17 deep

TUBE ASPIRATION  
 $\varnothing$  int.  $8,05 \pm 0,05$  sur  $16 \pm 1$  mm  
SUCTION TUBE  
Gage I.D. to 8,00-8,10  
x 15-17 deep

SUSPENSION  
Ech : 1/1  
Scale : 1/1



EC57114	a	-	Creation	21fev14	FC	AG
A.M. File no.	Ind Rev	Rep. Mark	Modifications Change content	Date Date	Visa Sign	Verif Check

**MATIERE:** Conforme a la specification T.P.Co. Global 08  
**Material:** Must comply with T.P.Co. Global Spec 08

TOLERANCES GENERALES GENERAL TOLERANCES	lineaire: $\pm 2,5$ straight: angulaire: $\pm 1^\circ$ angular:	
--	--	--

Dessine par: Drawn by: F. CAMUS	le: 21fev14	ECH. Scale 1/2	ORIGINE Origin
Verifie par: Check by: A. GOISNARD	le: 21fev14		-

COMPRESSEUR AE2	TECUMSEH EUROPE S.A. 38090 VAULX-MILIEU	Indice Revision
	DCAE196FR	a

Ce plan est propriete exclusive de notre societe tous droits de reproduction et de diffusion reserves.  
This drawing is the property of our society copyrights and publications reserved.