



# Compressor

Voltage Code : FZ

## AE4450Y-FZ1C

High Temp. Commercial (HP)

220 - 240V 1~ 50 Hz

R134a

AE4450Y-FZ1C\_BR

Operating conditions : **Customized... / 50 Hz / Dew**

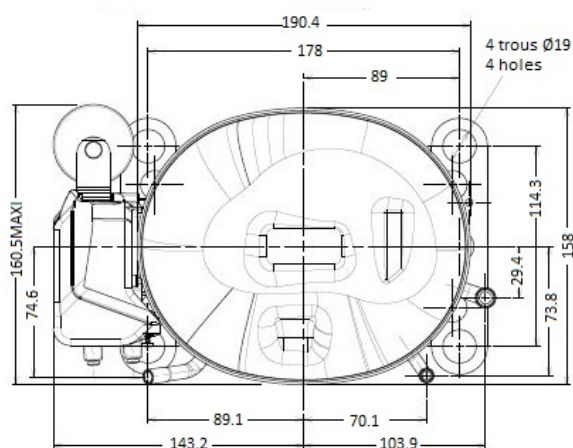
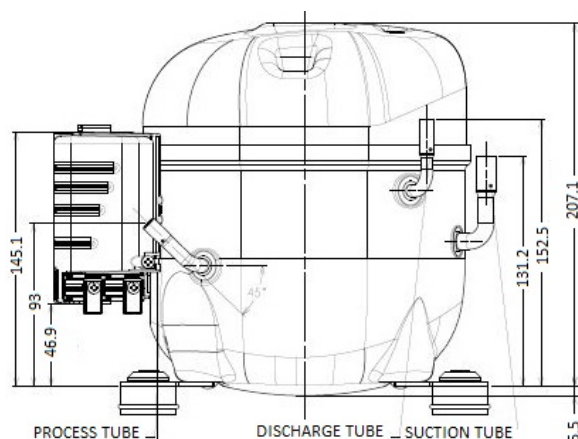
**Sound Power**  
ISO3745 / ISO 3743-1

Evaporating Temp. : -10.0 °C  
Superheat : 10.0 K  
Return gas temp. : 10.0 °C  
Condensing Temp. : 45.0 °C  
Subcooling : 10.0 K  
Liquid : 34.7 °C

Refrig. Capacity : 676 Watt

Power Input : 370 Watt  
Amps : 2.53 A  
C.O.P : 1.83 Watt/W

56 dBA



Displacement (cc) 13.24  
Net Weight (Kg) 11.7  
Oil Quantity (cc) 380.0  
Oil Type Polyolester  
Expansion Device Capillary\_Tube/Expansion\_Valve  
Cooling Fan  
Main Winding (Ohm) 4.8  
Start Winding (Ohm) 18.2

Current  
RLA (A) 3.2  
LRA (A) 17

Electrical Equipment CSIR

Overload T0616  
Time Check 2.8s - 5.2s / 18 A  
Open Temp 130° C  
Close Temp 61° C

Start Capacitor 88 µF / 250 V

Current Relay MTRP0012  
Pick Up 8,5A  
Drop Out 7,15A

Refrigerating connection for OD  
Suction Tube 9.5 (3/8")  
Discharge Tube 6.35 (1/4")  
Process Tube 6.35 (1/4")

Certificates :



Note : Tecumseh reserves the right to change information contained in this document without notification.

<b>AE4450Y-FZ1C</b>	<b>Tension FZ : 220 - 240V 1~ 50 Hz</b>
---------------------	---

Les performances sont données dans les <b>conditions EN12900</b> :	Gaz aspirés : 20.0 °C
Condition Dew	Sous refroidissement : 0.0 K
The performance data are in <b>EN12900 conditions</b> :	Return gas : 20.0 °C
Dew Condition	Subcooling : 0.0 K

<b>50 Hz R134a</b>											
											<b>N°3079</b>
4   T condensation	5   T évaporation	(°C)	<b>-25</b>	<b>-20</b>	<b>-15</b>	<b>-10</b>	<b>-5</b>	<b>0</b>	<b>5</b>	<b>10</b>	<b>15</b>
<b>30</b>	1   P frigorifique	(Watt)	386	510	656	828	1032	1269	1546	1864	2229
	2   P absorbée	(W)	241	271	299	326	353	381	412	447	487
	3   I absorbée	(A)	2.19	2.26	2.33	2.41	2.49	2.59	2.68	2.79	2.90
<b>40</b>	1   P frigorifique	(Watt)	322	437	569	725	907	1119	1365	1650	1976
	2   P absorbée	(W)	244	285	322	356	390	424	459	497	538
	3   I absorbée	(A)	2.16	2.26	2.37	2.49	2.61	2.74	2.88	3.02	3.17
<b>50</b>	1   P frigorifique	(Watt)		364	482	619	779	964	1180	1429	1716
	2   P absorbée	(W)		288	337	382	426	468	510	554	600
	3   I absorbée	(A)		2.26	2.41	2.57	2.73	2.90	3.07	3.25	3.44
<b>60</b>	1   P frigorifique	(Watt)			398	516	652	810	993	1206	1453
	2   P absorbée	(W)			341	401	457	510	563	616	670
	3   I absorbée	(A)			2.45	2.65	2.85	3.05	3.27	3.48	3.71

--	--	--	--	--	--	--	--	--	--	--	--

1 = cooling capacity 2 = power input 3 = current 4 = condensing temperature 5 = evaporating temperature
---

<p><b>Nota : Tecumseh se réserve le droit de modifier les informations contenues dans ce document sans préavis.</b></p> <p><b>Note : Tecumseh reserves the right to change information contained in this document without notification.</b></p>
---