



Compressor  
Voltage Code : FZ

CAJ2446Z-FZ

Low Temp. Commercial (BP)

220 - 240V 1~ 50 Hz

R404A

AJ2433Z-FZ3B

Operating conditions : **Customized... / 50 Hz / Dew**

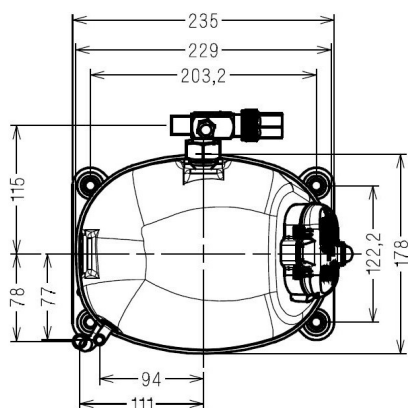
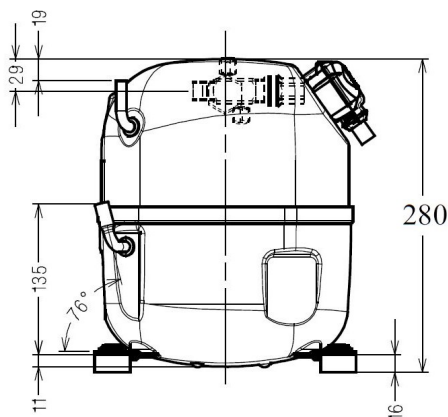
**Sound Power**  
ISO3745 / ISO 3743-1

Evaporating Temp. : -23.3 °C  
Superheat : 10.0 K  
Return gas temp. : 3.00 °C  
Condensing Temp. : 45.0 °C  
Subcooling : 10.0 K  
Liquid : 34.7 °C

Refrig. Capacity : **1021 Watt**

Power Input : 861 Watt  
Amps : 3.91 A  
C.O.P : 1.19 Watt/W

57 dBA



Displacement (cc) 26.2  
Net Weight (Kg) 21.3  
Oil Quantity (cc) 475.0  
Oil Type Polyolester  
Expansion Device Capillary\_Tube/Expansion\_Valve  
Cooling Fan  
Main Winding (Ohm) 2.9  
Start Winding (Ohm) 8.8

Current  
RLA (A) 4  
MCC (A) 8.2  
LRA (A) 30

Electrical Equipment CSR

Overload MST18AIN  
Time Check 7.5s - 14s / 20.7 A  
Open Temp 120° C  
Close Temp 69° C  
Optional T0750

Start Capacitor 88 µF / 330 V  
Run Capacitor 15 µF / 400 V

Potential Relay RVA40\*\*  
Pick Up 280/310V  
Drop Out 60/121V  
Optional 3ARR3\*6AC\*

Refrigerating connection for OD  
Suction Tube 12.7 (1/2")  
Discharge Tube 7.9 (5/16")  
Process Tube 6.35 (1/4")

Certificates :



Note : Tecumseh reserves the right to change information contained in this document without notification.

<b>CAJ2446Z-FZ</b>	<b>Tension FZ : 220 - 240V 1~ 50 Hz</b>
--------------------	---

Les performances sont données dans les <b>conditions EN12900</b> :	Gaz aspirés : 20.0 °C
Condition Dew	Sous refroidissement : 0.0 K
The performance data are in <b>EN12900 conditions</b> :	Return gas : 20.0 °C
Dew Condition	Subcooling : 0.0 K

50 Hz R404A									
N°124NT-FZ									
4   T condensation	5   T évaporation	(°C)	-40	-35	-30	-25	-20	-15	-10
<b>30</b>	1   P frigorifique	(Watt)	572	798	1067	1385	1756	2184	2674
	2   P absorbée	(W)	516	602	688	772	856	939	1022
	3   I absorbée	(A)	2.44	2.76	3.10	3.48	3.89	4.32	4.78
<b>40</b>	1   P frigorifique	(Watt)	429	627	859	1133	1451	1819	2241
	2   P absorbée	(W)	501	604	707	810	915	1020	1128
	3   I absorbée	(A)	2.38	2.77	3.20	3.65	4.13	4.64	5.18
<b>50</b>	1   P frigorifique	(Watt)		457	651	878	1141	1447	1799
	2   P absorbée	(W)		587	708	831	956	1085	1217
	3   I absorbée	(A)		2.77	3.28	3.81	4.36	4.95	5.56
<b>60</b>	1   P frigorifique	(Watt)			449	626	834	1075	1354
	2   P absorbée	(W)			694	837	984	1135	1292
	3   I absorbée	(A)			3.33	3.94	4.58	5.24	5.93

1 = cooling capacity 2 = power input 3 = current 4 = condensing temperature 5 = evaporating temperature

**Nota : Tecumseh se réserve le droit de modifier les informations contenues dans ce document sans préavis.**

**Note : Tecumseh reserves the right to change information contained in this document without notification.**