



Compressor
Voltage Code : FZ

CAJ4519Z-FZ

High Temp. Commercial (HP)

220 - 240V 1~ 50 Hz

R404A

AJ4519Z-FZ3C

Operating conditions : **Customized... / 50 Hz / Dew**

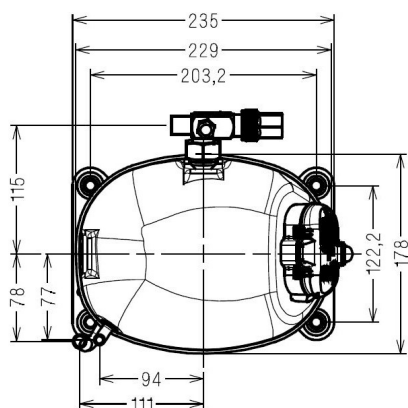
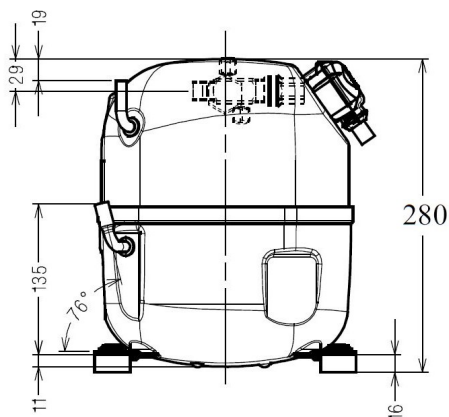
Sound Power
ISO3745 / ISO 3743-1

Evaporating Temp. : -10.0 °C
Superheat : 10.0 K
Return gas temp. : 10.0 °C
Condensing Temp. : 45.0 °C
Subcooling : 10.0 K
Liquid : 34.7 °C

Refrig. Capacity : 2718 Watt

Power Input : 1595 Watt
Amps : 7.18 A
C.O.P : 1.70 Watt/W

68 dBA



Displacement (cc) 34.5
Net Weight (Kg) 22.3
Oil Quantity (cc) 475.0
Oil Type Polyolester
Expansion Device Capillary_Tube/Expansion_Valve
Cooling Fan
Main Winding (Ohm) 1.3
Start Winding (Ohm) 6.1

Current
RLA (A) 9.9
MCC (A) 15.2
LRA (A) 45

Electrical Equipment CSR

Overload GA3SHU00
Time Check 7.5s - 14s / 34 A
Open Temp 140° C
Close Temp 61° C

Start Capacitor 100 µF / 250 V
Run Capacitor 35 µF / 400 V

Potential Relay RVA4G**
Pick Up 180/195V
Drop Out 40/105V
Optional 3ARR3*6AS*

Refrigerating connection for OD
Suction Tube 15.9 (5/8")
Discharge Tube 9.5 (3/8")
Process Tube 6.35 (1/4")

Certificates :



Note : Tecumseh reserves the right to change information contained in this document without notification.

CAJ4519Z-FZ	Tension FZ : 220 - 240V 1~ 50 Hz
--------------------	---

Les performances sont données dans les conditions EN12900 :	Gaz aspirés : 20.0 °C
Condition Dew	Sous refroidissement : 0.0 K
The performance data are in EN12900 conditions :	Return gas : 20.0 °C
Dew Condition	Subcooling : 0.0 K

50 Hz R404A											
N°224ST-FZ											
4 T condensation	5 T évaporation	(°C)	-25	-20	-15	-10	-5	0	5	10	15
30	1 P frigorifique	(Watt)	1745	2276	2889	3596	4412	5349	6419	7637	9015
	2 P absorbée	(W)	1116	1219	1321	1422	1522	1624	1728	1835	1947
	3 I absorbée	(A)	5.25	5.67	6.10	6.52	6.94	7.35	7.77	8.18	8.59
40	1 P frigorifique	(Watt)	1354	1843	2390	3008	3710	4510	5420	6453	7623
	2 P absorbée	(W)	1160	1291	1418	1540	1661	1779	1898	2017	2138
	3 I absorbée	(A)	5.25	5.83	6.40	6.97	7.54	8.11	8.68	9.24	9.80
50	1 P frigorifique	(Watt)		1394	1866	2386	2966	3619	4360	5200	6152
	2 P absorbée	(W)		1324	1486	1643	1795	1942	2087	2230	2372
	3 I absorbée	(A)		5.92	6.64	7.37	8.09	8.80	9.52	10.2	10.9
60	1 P frigorifique	(Watt)			1341	1753	2202	2701	3263	3901	4627
	2 P absorbée	(W)			1507	1709	1904	2092	2275	2454	2629
	3 I absorbée	(A)			6.82	7.69	8.56	9.43	10.3	11.2	12.0

--	--	--	--	--	--	--	--	--	--	--	--

1 = cooling capacity 2 = power input 3 = current 4 = condensing temperature 5 = evaporating temperature

<p>Nota : Tecumseh se réserve le droit de modifier les informations contenues dans ce document sans préavis.</p> <p>Note : Tecumseh reserves the right to change information contained in this document without notification.</p>
