



Compressor  
Voltage Code : TZ

TAG4561Z

High Temp. Commercial (HP)

400V 3~ 50Hz / 440V 3~ 60 Hz

R404A

AGB4561ZTZ

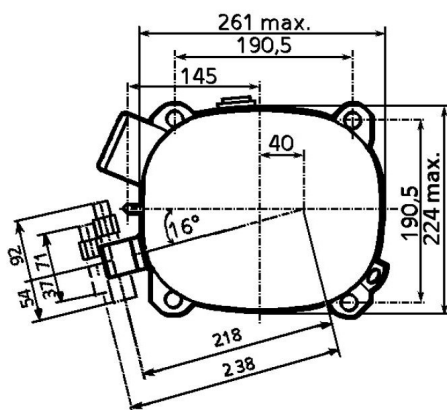
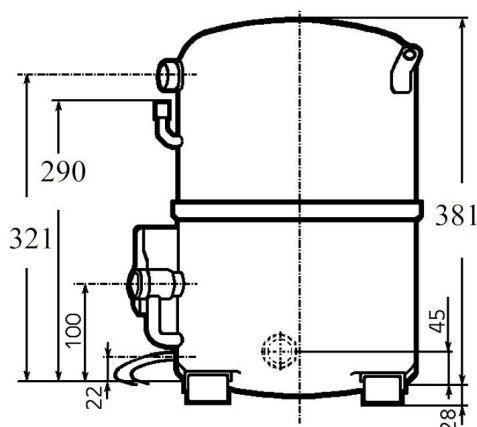
Operating conditions : **Customized... / 50 Hz / Dew**

**Sound Power**  
ISO3745 / ISO 3743-1

Evaporating Temp. : -10.0 °C  
Superheat : 10.0 K  
Return gas temp. : 10.0 °C  
Condensing Temp. : 45.0 °C  
Subcooling : 10.0 K  
Liquid : 34.7 °C

Refrig. Capacity : **7157 Watt**  
  
Power Input : 3782 Watt  
Amps : 6.07 A  
C.O.P : 1.89 Watt/W

83 dBA



Displacement (cc) 112.5  
Net Weight (Kg) 46.0  
Oil Quantity (cc) 1760.0  
Oil Type Polyolester  
Expansion Device Capillary\_Tube/Expansion\_Valve  
Cooling Fan  
Main Winding (Ohm) 3.2

**Current**  
RLA (A) 9.2 | 9.6  
MCC (A) 15.3 | 14.7  
LRA (A) 50 | 52

**Electrical Equipment** TRI

**Overload** Interne

**Refrigerating connection for OD**

Suction Tube 28.6 (1"1/8)  
Discharge Tube 15.9 (5/8")  
Process Tube 6.35 (1/4")

Certificates :



Note : Tecumseh reserves the right to change information contained in this document without notification.

<b>TAG4561Z</b>	<b>Tension TZ : 400V 3~ 50Hz / 440V 3~ 60 Hz</b>
-----------------	--

Les performances sont données dans les **conditions EN12900** :  
Condition Dew

Gaz aspirés : 20.0 °C  
Sous refroidissement : 0.0 K

The performance data are in **EN12900 conditions** :  
Dew Condition

Return gas : 20.0 °C  
Subcooling : 0.0 K

<b>50 Hz R404A</b>											
4   T condensation	5   T évaporation	(°C)	-25	-20	-15	-10	-5	0	5	10	15
<b>30</b>	1   P frigorifique	(Watt)	4437	5990	7847	10057	12669	15732	19295	23405	28113
	2   P absorbée	(W)	2391	2781	3154	3525	3911	4324	4782	5300	5891
	3   I absorbée	(A)	4.42	4.86	5.33	5.82	6.33	6.86	7.42	8.00	8.60
<b>40</b>	1   P frigorifique	(Watt)	3185	4594	6210	8083	10261	12793	15728	19115	23001
	2   P absorbée	(W)	2312	2813	3276	3717	4153	4597	5064	5572	6133
	3   I absorbée	(A)	4.34	4.87	5.43	6.01	6.61	7.23	7.88	8.55	9.24
<b>50</b>	1   P frigorifique	(Watt)		3147	4560	6133	7914	9953	12297	14997	18100
	2   P absorbée	(W)		2679	3269	3817	4338	4848	5362	5896	6464
	3   I absorbée	(A)		4.80	5.45	6.12	6.82	7.53	8.27	9.03	9.81
<b>60</b>	1   P frigorifique	(Watt)			2864	4173	5595	7177	8969	11018	13375
	2   P absorbée	(W)			3075	3765	4409	5022	5618	6214	6824
	3   I absorbée	(A)			5.40	6.17	6.95	7.76	8.59	9.44	10.3

<b>60 Hz R404A</b>											
4   T condensation	5   T évaporation	(°C)	-25	-20	-15	-10	-5	0	5	10	15
<b>30</b>	1   P frigorifique	(Watt)	5645	7582	9924	12635	15679	19019	22621	26448	30464
	2   P absorbée	(W)	2996	3526	4051	4581	5132	5716	6347	7037	7800
	3   I absorbée	(A)	4.82	5.53	6.28	7.07	7.89	8.74	9.63	10.6	11.5
<b>40</b>	1   P frigorifique	(Watt)	4250	5846	7829	10163	12812	15740	18911	22288	25837
	2   P absorbée	(W)	2872	3523	4143	4746	5346	5955	6587	7256	7973
	3   I absorbée	(A)	4.77	5.55	6.36	7.21	8.09	9.01	9.97	11.0	12.0
<b>50</b>	1   P frigorifique	(Watt)		4234	5842	7782	10019	12517	15239	18150	21214
	2   P absorbée	(W)		3328	4093	4817	5515	6198	6880	7575	8296
	3   I absorbée	(A)		5.47	6.35	7.26	8.21	9.20	10.2	11.3	12.4
<b>60</b>	1   P frigorifique	(Watt)			3742	5271	7079	9129	11387	13814	16377
	2   P absorbée	(W)			3794	4688	5531	6337	7119	7889	8662
	3   I absorbée	(A)			6.25	7.23	8.24	9.29	10.4	11.5	12.6

1 = cooling capacity 2 = power input 3 = current 4 = condensing temperature 5 = evaporating temperature

**Nota : Tecumseh se réserve le droit de modifier les informations contenues dans ce document sans préavis.**

**Note : Tecumseh reserves the right to change information contained in this document without notification.**