



Compressor
Voltage Code : FZ

CAJ9510Z-FZ

High Temp. Commercial (MHP)

220 - 240V 1~ 50 Hz

R404A

AJK510Z-FZ3B

Operating conditions : **Customized... / 50 Hz / Dew**

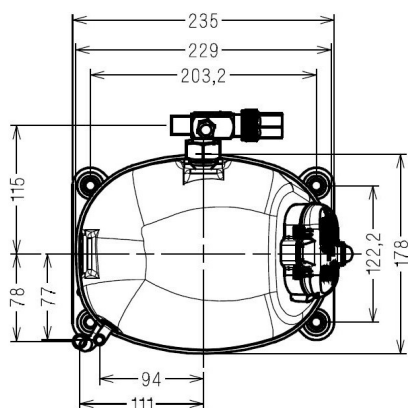
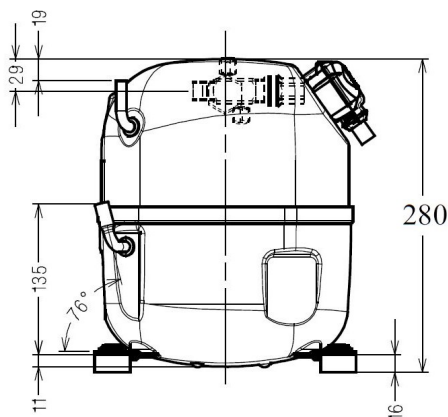
Sound Power
ISO3745 / ISO 3743-1

Evaporating Temp. : -10.0 °C
Superheat : 10.0 K
Return gas temp. : 10.0 °C
Condensing Temp. : 45.0 °C
Subcooling : 10.0 K
Liquid : 34.7 °C

Refrig. Capacity : **1463 Watt**

Power Input : 844 Watt
Amps : 3.95 A
C.O.P : 1.73 Watt/W

63 dBA



Displacement (cc) 18.3
Net Weight (Kg) 21.4
Oil Quantity (cc) 475.0
Oil Type Polyolester
Expansion Device Capillary_Tube/Expansion_Valve
Cooling Fan
Main Winding (Ohm) 2.9
Start Winding (Ohm) 8.8

Current
RLA (A) 5.4
MCC (A) 8.4
LRA (A) 30

Electrical Equipment CSR

Overload MRA38128
Time Check 2.8s - 5.2s / 20.5 A
Open Temp 105° C
Close Temp 52° C
Optional /

Start Capacitor 100 µF / 330 V
Run Capacitor 15 µF / 400 V

Potential Relay RVA40**
Pick Up 280/310V
Drop Out 60/121V
Optional 3ARR3*6AC*

Refrigerating connection for OD
Suction Tube 15.9 (5/8")
Discharge Tube 7.9 (5/16")
Process Tube 6.35 (1/4")

Certificates :



Note : Tecumseh reserves the right to change information contained in this document without notification.

CAJ9510Z-FZ	Tension FZ : 220 - 240V 1~ 50 Hz
--------------------	---

Les performances sont données dans les conditions EN12900 :	Gaz aspirés : 20.0 °C
Condition Dew	Sous refroidissement : 0.0 K
The performance data are in EN12900 conditions :	Return gas : 20.0 °C
Dew Condition	Subcooling : 0.0 K

50 Hz R404A											
N°224ET-FZ											
4 T condensation	5 T évaporation	(°C)	-25	-20	-15	-10	-5	0	5	10	15
30	1 P frigorifique	(Watt)	964	1234	1555	1935	2380	2898	3496	4182	4962
	2 P absorbée	(W)	583	642	698	748	793	832	864	888	903
	3 I absorbée	(A)	2.85	3.10	3.34	3.56	3.77	3.96	4.13	4.29	4.43
40	1 P frigorifique	(Watt)	771	1013	1292	1616	1991	2426	2927	3501	4156
	2 P absorbée	(W)	601	676	748	816	879	937	989	1035	1072
	3 I absorbée	(A)	2.85	3.19	3.52	3.83	4.13	4.41	4.67	4.92	5.15
50	1 P frigorifique	(Watt)		785	1022	1289	1594	1945	2348	2811	3340
	2 P absorbée	(W)		695	784	870	953	1031	1104	1172	1232
	3 I absorbée	(A)		3.24	3.66	4.06	4.45	4.82	5.17	5.51	5.83
60	1 P frigorifique	(Watt)			746	957	1191	1457	1762	2112	2516
	2 P absorbée	(W)			807	912	1015	1114	1209	1299	1384
	3 I absorbée	(A)			3.77	4.26	4.73	5.19	5.64	6.07	6.48

--	--	--	--	--	--	--	--	--	--	--	--

1 = cooling capacity 2 = power input 3 = current 4 = condensing temperature 5 = evaporating temperature

<p>Nota : Tecumseh se réserve le droit de modifier les informations contenues dans ce document sans préavis.</p> <p>Note : Tecumseh reserves the right to change information contained in this document without notification.</p>
