



Compressor

Voltage Code : FZ

AE4460Z-FZ1C

High Temp. Commercial (HP)

220 - 240V 1~ 50 Hz

R404A

AE4460Z-FZ1C_BR

Operating conditions : **Customized... / 50 Hz / Dew**

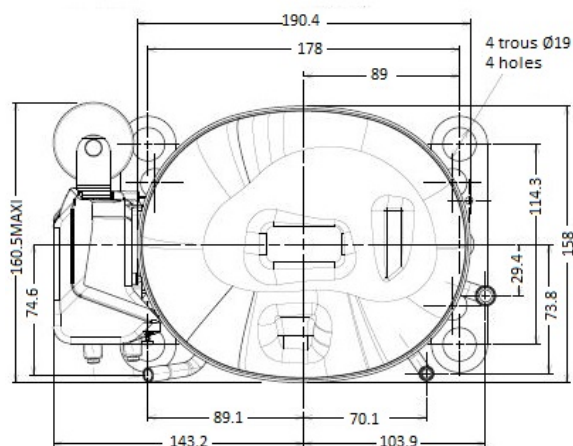
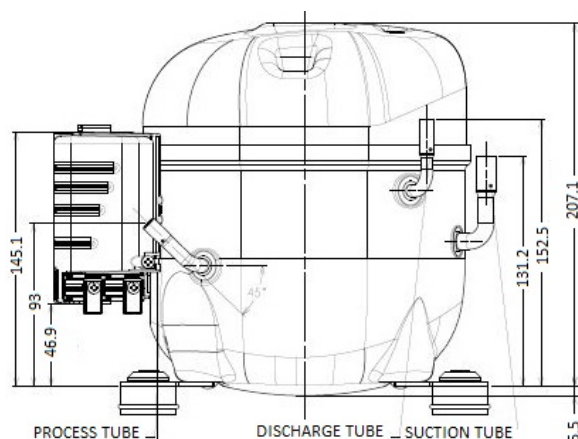
Sound Power
ISO3745 / ISO 3743-1

Evaporating Temp. : -10.0 °C
Superheat : 10.0 K
Return gas temp. : 10.0 °C
Condensing Temp. : 45.0 °C
Subcooling : 10.0 K
Liquid : 34.7 °C

Refrig. Capacity : **882 Watt**

Power Input : 524 Watt
Amps : 3.49 A
C.O.P : 1.68 Watt/W

61 dBA



Displacement (cc) 10.33
Net Weight (Kg) 11.5
Oil Quantity (cc) 380.0
Oil Type Polyolester
Expansion Device Capillary_Tube/Expansion_Valve
Cooling Fan
Main Winding (Ohm) 3.49
Start Winding (Ohm) 19.12

Current
RLA (A) 4.27
LRA (A) 19.0

Electrical Equipment CSIR

Overload T8107
Time Check 6.5s - 16s / 12.50 A
Open Temp 135° C
Close Temp 61° C

Start Capacitor 64 µF / 330 V

Current Relay RP54**
Pick Up 10.50A
Drop Out 8.9A

Refrigerating connection for OD
Suction Tube 9.5 (3/8")
Discharge Tube 6.35 (1/4")
Process Tube 6.35 (1/4")

Certificates :



Note : Tecumseh reserves the right to change information contained in this document without notification.

AE4460Z-FZ1C	Tension FZ : 220 - 240V 1~ 50 Hz
---------------------	---

Les performances sont données dans les conditions EN12900 :	Gaz aspirés : 20.0 °C
Condition Dew	Sous refroidissement : 0.0 K
The performance data are in EN12900 conditions :	Return gas : 20.0 °C
Dew Condition	Subcooling : 0.0 K

50 Hz R404A											
N°3114											
4 T condensation	5 T évaporation	(°C)	-25	-20	-15	-10	-5	0	5	10	15
30	1 P frigorifique	(Watt)	606	755	930	1135	1374	1651	1970	2334	2747
	2 P absorbée	(W)	371	398	426	453	479	503	524	543	557
	3 I absorbée	(A)	2.99	3.10	3.20	3.28	3.35	3.41	3.47	3.50	3.53
40	1 P frigorifique	(Watt)	499	633	787	964	1168	1403	1673	1981	2331
	2 P absorbée	(W)	400	432	466	500	534	568	600	630	657
	3 I absorbée	(A)	2.97	3.13	3.28	3.42	3.54	3.65	3.76	3.85	3.93
50	1 P frigorifique	(Watt)		505	636	784	952	1144	1363	1614	1900
	2 P absorbée	(W)		468	507	548	590	633	675	716	756
	3 I absorbée	(A)		3.17	3.37	3.56	3.74	3.90	4.06	4.20	4.33
60	1 P frigorifique	(Watt)			478	596	726	874	1041	1233	1454
	2 P absorbée	(W)			556	603	652	703	755	807	859
	3 I absorbée	(A)			3.48	3.72	3.95	4.17	4.37	4.57	4.75

1 = cooling capacity 2 = power input 3 = current 4 = condensing temperature 5 = evaporating temperature

Nota : Tecumseh se réserve le droit de modifier les informations contenues dans ce document sans préavis.

Note : Tecumseh reserves the right to change information contained in this document without notification.