



Compressor  
Voltage Code : FZ

AE1420Z-FZ1B

Low Temp. Commercial (BP)

220 - 240V 1~ 50 Hz

R404A

AE1420Z-FZ1B

Operating conditions : **Customized... / 50 Hz / Dew**

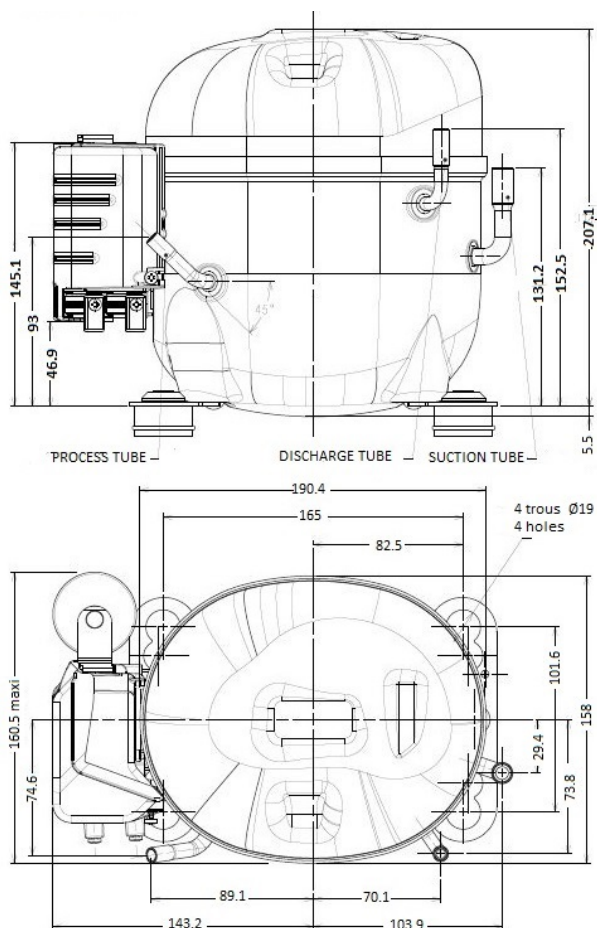
**Sound Power**  
ISO3745 / ISO 3743-1

Evaporating Temp. : -23.3 °C  
Superheat : 10.0 K  
Return gas temp. : 3.00 °C  
Condensing Temp. : 45.0 °C  
Subcooling : 10.0 K  
Liquid : 34.7 °C

Refrig. Capacity : 395 Watt

Power Input : 354 Watt  
Amps : 2.23 A  
C.O.P : 1.12 Watt/W

49 dBA



Displacement (cc) 9.3  
Net Weight (Kg) 11.2  
Oil Quantity (cc) 380.0  
Oil Type Polyolester  
Expansion Device Capillary\_Tube or Expansion\_Valve  
Cooling Fan  
Main Winding (Ohm) 3.85  
Start Winding (Ohm) 22.47

Current  
RLA (A) 2.6  
LRA (A) 18.5

Electrical Equipment CSIR

Overload T96105  
Time Check 6.5s - 16s / 11.5 A  
Open Temp 130° C  
Close Temp 52° C

Start Capacitor 88 µF / 330 V

Current Relay 9660D\*\*\*-154  
Pick Up 8.40A  
Drop Out 7.00A

Refrigerating connection for OD  
Suction Tube 9.5 (3/8")  
Discharge Tube 6.35 (1/4")  
Process Tube 6.35 (1/4")

Certificates :



Note : Tecumseh reserves the right to change information contained in this document without notification.

<b>AE1420Z-FZ1B</b>	<b>Tension FZ : 220 - 240V 1~ 50 Hz</b>
---------------------	---

Les performances sont données dans les <b>conditions EN12900</b> :	Gaz aspirés : 20.0 °C
Condition Dew	Sous refroidissement : 0.0 K
The performance data are in <b>EN12900 conditions</b> :	Return gas : 20.0 °C
Dew Condition	Subcooling : 0.0 K

<b>50 Hz R404A</b>									
<b>N°3001</b>									
4   T condensation	5   T évaporation	(°C)	<b>-40</b>	<b>-35</b>	<b>-30</b>	<b>-25</b>	<b>-20</b>	<b>-15</b>	<b>-10</b>
<b>30</b>	1   P frigorifique	(Watt)	224	305	404	522	661	824	1012
	2   P absorbée	(W)	214	246	279	312	345	378	411
	3   I absorbée	(A)	1.83	1.89	1.97	2.07	2.19	2.32	2.46
<b>40</b>	1   P frigorifique	(Watt)	175	246	332	434	555	695	858
	2   P absorbée	(W)	215	252	291	331	372	414	456
	3   I absorbée	(A)	1.79	1.89	2.01	2.14	2.29	2.46	2.64
<b>50</b>	1   P frigorifique	(Watt)		188	260	345	445	563	699
	2   P absorbée	(W)		253	299	346	395	446	499
	3   I absorbée	(A)		1.88	2.04	2.21	2.39	2.59	2.81
<b>60</b>	1   P frigorifique	(Watt)			188	255	334	427	537
	2   P absorbée	(W)			303	359	417	478	541
	3   I absorbée	(A)			2.05	2.26	2.48	2.72	2.97

--	--	--	--	--	--	--	--	--	--

1 = cooling capacity 2 = power input 3 = current 4 = condensing temperature 5 = evaporating temperature
---

<p><b>Nota : Tecumseh se réserve le droit de modifier les informations contenues dans ce document sans préavis.</b></p> <p><b>Note : Tecumseh reserves the right to change information contained in this document without notification.</b></p>
---