



Compressor
Voltage Code : FZ

CAJ2432Z-FZ

Low Temp. Commercial (BP)

220 - 240V 1~ 50 Hz

R404A

AJ2422Z-FZ3B

Operating conditions : **Customized... / 50 Hz / Dew**

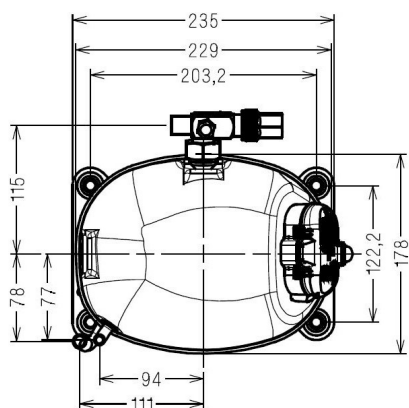
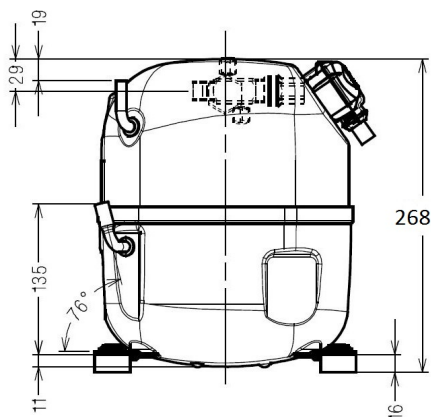
Sound Power
ISO3745 / ISO 3743-1

Evaporating Temp. : -23.3 °C
Superheat : 10.0 K
Return gas temp. : 3.00 °C
Condensing Temp. : 45.0 °C
Subcooling : 10.0 K
Liquid : 34.7 °C

Refrig. Capacity : **674 Watt**

Power Input : 572 Watt
Amps : 2.66 A
C.O.P : 1.18 Watt/W

58 dBA



Displacement (cc) 18.3
Net Weight (Kg) 20.1
Oil Quantity (cc) 475.0
Oil Type Polyolester
Expansion Device Capillary_Tube/Expansion_Valve
Cooling Fan
Main Winding (Ohm) 4.5
Start Winding (Ohm) 9.8

Current
RLA (A) 2.4
MCC (A) 5.9
LRA (A) 21

Electrical Equipment CSR

Overload MRA38111
Time Check 7.5s - 14s / 15.4 A
Open Temp 105° C
Close Temp 52° C
Optional T0348

Start Capacitor 88 µF / 330 V
Run Capacitor 15 µF / 400 V

Potential Relay RVA4P**
Pick Up 300/328V
Drop Out 60/121V
Optional 3ARR3*10AD*

Refrigerating connection for OD
Suction Tube 12.7 (1/2")
Discharge Tube 7.9 (5/16")
Process Tube 6.35 (1/4")

Certificates :



Note : Tecumseh reserves the right to change information contained in this document without notification.

CAJ2432Z-FZ	Tension FZ : 220 - 240V 1~ 50 Hz
--------------------	---

Les performances sont données dans les conditions EN12900 :	Gaz aspirés : 20.0 °C
Condition Dew	Sous refroidissement : 0.0 K
The performance data are in EN12900 conditions :	Return gas : 20.0 °C
Dew Condition	Subcooling : 0.0 K

50 Hz R404A									
N°124ET-FZ									
4 T condensation	5 T évaporation	(°C)	-40	-35	-30	-25	-20	-15	-10
30	1 P frigorifique	(Watt)	352	506	697	927	1202	1524	1897
	2 P absorbée	(W)	340	398	456	516	577	641	709
	3 I absorbée	(A)	1.63	1.87	2.13	2.40	2.69	3.00	3.32
40	1 P frigorifique	(Watt)	259	391	552	748	981	1257	1577
	2 P absorbée	(W)	327	397	467	540	616	696	781
	3 I absorbée	(A)	1.58	1.87	2.18	2.51	2.85	3.21	3.58
50	1 P frigorifique	(Watt)		276	408	567	759	986	1253
	2 P absorbée	(W)		376	458	543	633	728	830
	3 I absorbée	(A)		1.80	2.16	2.54	2.93	3.34	3.77
60	1 P frigorifique	(Watt)			269	392	540	718	929
	2 P absorbée	(W)			430	528	631	740	857
	3 I absorbée	(A)			2.07	2.50	2.94	3.40	3.88

--	--	--	--	--	--	--	--	--	--

1 = cooling capacity 2 = power input 3 = current 4 = condensing temperature 5 = evaporating temperature

<p>Nota : Tecumseh se réserve le droit de modifier les informations contenues dans ce document sans préavis.</p> <p>Note : Tecumseh reserves the right to change information contained in this document without notification.</p>
