



Compressor  
Voltage Code : FZ

CAJ4492Y-FZ

High Temp. Commercial (HP)

220 - 240V 1~ 50 Hz

R134a

AJ4492Y-FZ1B

Operating conditions : **Customized... / 50 Hz / Dew**

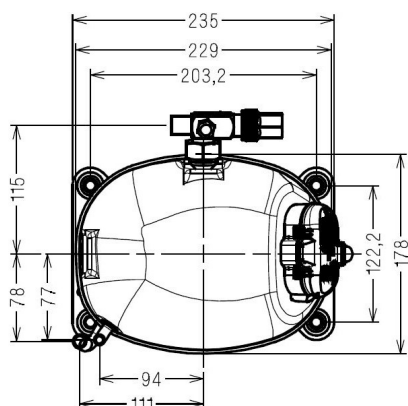
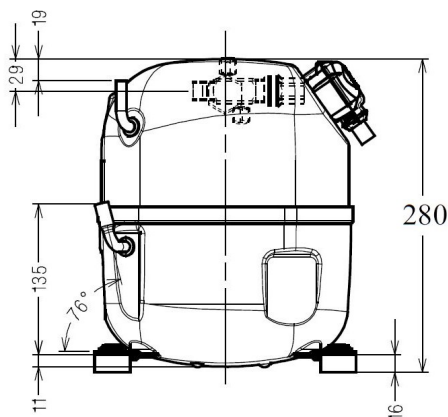
**Sound Power**  
ISO3745 / ISO 3743-1

Evaporating Temp. : -10.0 °C  
Superheat : 10.0 K  
Return gas temp. : 10.0 °C  
Condensing Temp. : 45.0 °C  
Subcooling : 10.0 K  
Liquid : 34.7 °C

Refrig. Capacity : 1121 Watt

Power Input : 649 Watt  
Amps : 4.76 A  
C.O.P : 1.73 Watt/W

58 dBA



Displacement (cc) 25.95  
Net Weight (Kg) 20.3  
Oil Quantity (cc) 475.0  
Oil Type Polyolester  
Expansion Device Capillary\_Tube/Expansion\_Valve  
Cooling Fan  
Main Winding (Ohm) 2.9  
Start Winding (Ohm) 12.8

Current  
RLA (A) 5.7  
MCC (A) 8.9  
LRA (A) 28

Electrical Equipment CSIR

Overload MST18AIN  
Time Check 7.5s - 14s / 20.7 A  
Open Temp 120° C  
Close Temp 69° C  
Optional T0750

Start Capacitor 64 µF / 330 V

Potential Relay RVA4G\*\*  
Pick Up 180/195V  
Drop Out 40/105V

Refrigerating connection for OD  
Suction Tube 12.7 (1/2")  
Discharge Tube 7.9 (5/16")  
Process Tube 6.35 (1/4")

Certificates :



Note : Tecumseh reserves the right to change information contained in this document without notification.



**Tecumseh**

**CAJ4492Y-FZ**

**Tension FZ : 220 - 240V 1~ 50 Hz**

Les performances sont données dans les **conditions EN12900** :  
Condition Dew

Gaz aspirés : 20.0 °C  
Sous refroidissement : 0.0 K

The performance data are in **EN12900 conditions** :  
Dew Condition

Return gas : 20.0 °C  
Subcooling : 0.0 K

## 50 Hz R134a



**N°214LS-FZ**

4   T condensation	5   T évaporation	(°C)	-25	-20	-15	-10	-5	0	5	10	15
<b>30</b>	1   P frigorifique	(Watt)	592	828	1113	1455	1864	2348	2915	3574	4334
	2   P absorbée	(W)	415	479	536	588	636	680	723	764	804
	3   I absorbée	(A)	4.32	4.39	4.47	4.58	4.70	4.85	5.01	5.20	5.40
<b>40</b>	1   P frigorifique	(Watt)	441	664	925	1230	1590	2013	2507	3081	3744
	2   P absorbée	(W)	397	483	562	634	701	763	823	880	935
	3   I absorbée	(A)	4.23	4.37	4.53	4.71	4.91	5.13	5.37	5.62	5.90
<b>50</b>	1   P frigorifique	(Watt)		480	722	996	1313	1681	2108	2603	3174
	2   P absorbée	(W)		455	560	657	748	834	915	993	1068
	3   I absorbée	(A)		4.32	4.55	4.81	5.08	5.37	5.69	6.02	6.37
<b>60</b>	1   P frigorifique	(Watt)			499	748	1028	1346	1711	2133	2619
	2   P absorbée	(W)			524	652	772	886	994	1098	1198
	3   I absorbée	(A)			4.55	4.87	5.22	5.59	5.97	6.38	6.81

© 2019 Tecumseh Products Company  
All rights reserved

1 = cooling capacity 2 = power input 3 = current 4 = condensing temperature 5 = evaporating temperature

**Nota : Tecumseh se réserve le droit de modifier les informations contenues dans ce document sans préavis.**

**Note : Tecumseh reserves the right to change information contained in this document without notification.**