



Compressor
Voltage Code : TZ

TFH4524Z

High Temp. Commercial (HP)

400V 3~ 50Hz / 440V 3~ 60 Hz

R404A

AHC4524ZTZ

Operating conditions : **Customized... / 50 Hz / Dew**

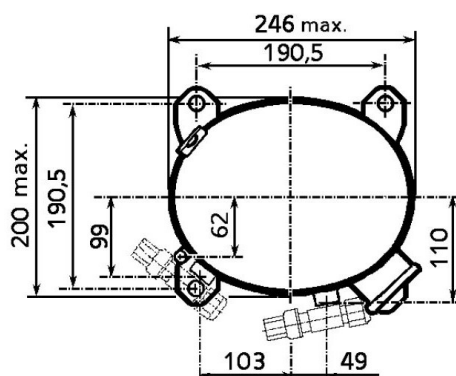
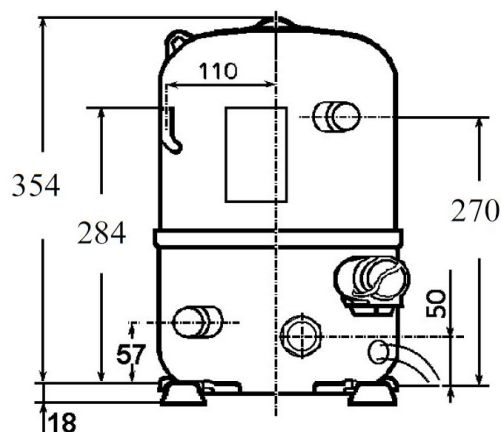
Sound Power
ISO3745 / ISO 3743-1

Evaporating Temp. : -10.0 °C
Superheat : 10.0 K
Return gas temp. : 10.0 °C
Condensing Temp. : 45.0 °C
Subcooling : 10.0 K
Liquid : 34.7 °C

Refrig. Capacity : **3069 Watt**

Power Input : 1743 Watt
Amps : 3.53 A
C.O.P : 1.76 Watt/W

72 dBA



Displacement (cc) 43.5
Net Weight (Kg) 30.4
Oil Quantity (cc) 1330.0
Oil Type Polyolester
Expansion Device Capillary_Tube/Expansion_Valve
Cooling Fan
Main Winding (Ohm) 6.3

Current
RLA (A) 4.3 | 4.7
MCC (A) 7.7 | 7.9
LRA (A) 24 | 25

Electrical Equipment TRI

Overload Interne

Refrigerating connection for OD

Suction Tube 15.9 (5/8")
Discharge Tube 12.7 (1/2")
Process Tube 6.35 (1/4")

Certificates :



Note : Tecumseh reserves the right to change information contained in this document without notification.

TFH4524Z

Tension TZ : 400V 3~ 50Hz / 440V 3~ 60 Hz

Les performances sont données dans les **conditions EN12900** :

Condition Dew

Gaz aspirés : 20.0 °C

Sous refroidissement : 0.0 K

The performance data are in **EN12900 conditions** :

Dew Condition

Return gas : 20.0 °C

Subcooling : 0.0 K

50 Hz R404A



N°226EU-T

4 T condensation	5 T évaporation	(°C)	-25	-20	-15	-10	-5	0	5	10	15
30	1 P frigorifique	(Watt)	1837	2506	3292	4203	5248	6435	7772	9268	10932
	2 P absorbée	(W)	1140	1308	1455	1584	1697	1797	1888	1971	2049
	3 I absorbée	(A)	2.86	3.04	3.20	3.35	3.50	3.63	3.75	3.86	3.96
40	1 P frigorifique	(Watt)	1320	1935	2640	3443	4353	5378	6526	7807	9228
	2 P absorbée	(W)	1104	1329	1528	1705	1862	2002	2128	2242	2347
	3 I absorbée	(A)	2.82	3.06	3.28	3.49	3.69	3.88	4.06	4.22	4.38
50	1 P frigorifique	(Watt)		1326	1948	2642	3415	4277	5236	6300	7477
	2 P absorbée	(W)		1272	1531	1764	1972	2159	2328	2481	2620
	3 I absorbée	(A)		3.00	3.28	3.55	3.81	4.06	4.29	4.52	4.73
60	1 P frigorifique	(Watt)			1214	1797	2433	3130	3898	4744	5676
	2 P absorbée	(W)			1455	1750	2018	2260	2479	2678	2860
	3 I absorbée	(A)			3.22	3.55	3.86	4.17	4.46	4.75	5.02

60 Hz R404A

N°226EU-T

4 T condensation	5 T évaporation	(°C)	-25	-20	-15	-10	-5	0	5	10	15
30	1 P frigorifique	(Watt)	1984	2834	3795	4882	6110	7495	9052	10797	12744
	2 P absorbée	(W)	1253	1497	1706	1898	2092	2305	2555	2860	3238
	3 I absorbée	(A)	2.54	2.79	3.02	3.25	3.47	3.67	3.86	4.05	4.22
40	1 P frigorifique	(Watt)	1271	2084	2971	3945	5024	6221	7553	9035	10682
	2 P absorbée	(W)	1114	1466	1752	1992	2203	2404	2611	2843	3118
	3 I absorbée	(A)	2.45	2.76	3.07	3.36	3.64	3.91	4.17	4.41	4.65
50	1 P frigorifique	(Watt)		1291	2107	2974	3907	4921	6032	7255	8606
	2 P absorbée	(W)		1271	1694	2040	2328	2574	2797	3015	3246
	3 I absorbée	(A)		2.66	3.02	3.38	3.72	4.06	4.38	4.69	5.00
60	1 P frigorifique	(Watt)			1206	1970	2762	3597	4491	5460	6519
	2 P absorbée	(W)			1397	1908	2330	2680	2978	3240	3486
	3 I absorbée	(A)			2.89	3.31	3.72	4.12	4.51	4.89	5.25

1 = cooling capacity 2 = power input 3 = current 4 = condensing temperature 5 = evaporating temperature

Nota : Tecumseh se réserve le droit de modifier les informations contenues dans ce document sans préavis.

Note : Tecumseh reserves the right to change information contained in this document without notification.