



Compressor
Voltage Code : TZ

TAG4568Z

High Temp. Commercial (HP)

400V 3~ 50Hz / 440V 3~ 60 Hz

R404A

AGB4568ZTZ

Operating conditions : **Customized... / 50 Hz / Dew**

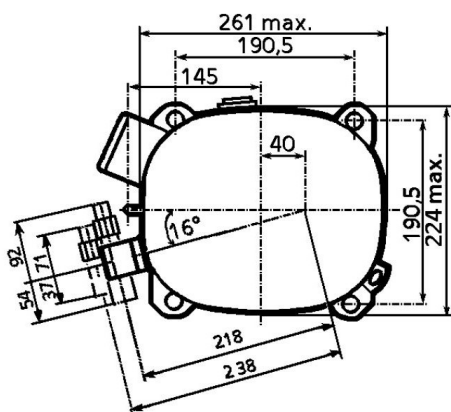
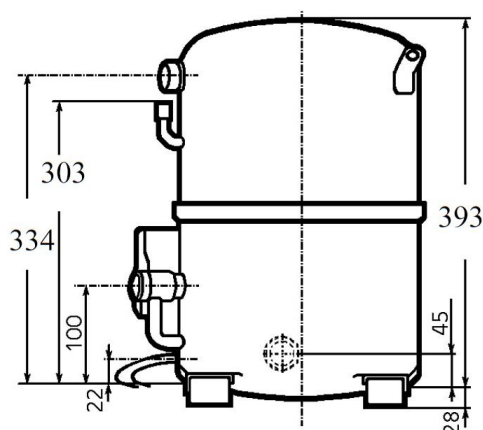
Sound Power
ISO3745 / ISO 3743-1

Evaporating Temp. : -10.0 °C
Superheat : 10.0 K
Return gas temp. : 10.0 °C
Condensing Temp. : 45.0 °C
Subcooling : 10.0 K
Liquid : 34.7 °C

Refrig. Capacity : **8536 Watt**

Power Input : 4240 Watt
Amps : 7.02 A
C.O.P : 2.01 Watt/W

81 dBA



Displacement (cc) 124.4
Net Weight (Kg) 47.2
Oil Quantity (cc) 1760.0
Oil Type Polyolester
Expansion Device Capillary_Tube/Expansion_Valve
Cooling Fan
Main Winding (Ohm) 2.6

Current
RLA (A) 10.3 | 10.8
MCC (A) 17.8 | 17.5
LRA (A) 56 | 58

Electrical Equipment TRI

Overload Interne

Refrigerating connection for OD

Suction Tube 28.6 (1"1/8)
Discharge Tube 15.9 (5/8")
Process Tube 6.35 (1/4")

Certificates :



Note : Tecumseh reserves the right to change information contained in this document without notification.

TAG4568Z	Tension TZ : 400V 3~ 50Hz / 440V 3~ 60 Hz
-----------------	--

Les performances sont données dans les conditions EN12900 :	Gaz aspirés : 20.0 °C
Condition Dew	Sous refroidissement : 0.0 K
The performance data are in EN12900 conditions :	Return gas : 20.0 °C
Dew Condition	Subcooling : 0.0 K

50 Hz R404A											
N°227JU-T											
4 T condensation	5 T évaporation	(°C)	-25	-20	-15	-10	-5	0	5	10	15
30	1 P frigorifique	(Watt)	5428	7159	9193	11574	14348	17558	21248	25463	30248
	2 P absorbée	(W)	2748	3147	3523	3895	4284	4707	5186	5739	6385
	3 I absorbée	(A)	5.04	5.57	6.09	6.61	7.12	7.62	8.12	8.60	9.08
40	1 P frigorifique	(Watt)	4015	5606	7425	9519	11931	14705	17887	21520	25649
	2 P absorbée	(W)	2674	3205	3686	4135	4573	5018	5491	6011	6597
	3 I absorbée	(A)	4.93	5.60	6.26	6.91	7.55	8.19	8.82	9.44	10.0
50	1 P frigorifique	(Watt)		4049	5639	7429	9463	11787	14444	17478	20935
	2 P absorbée	(W)		3101	3742	4325	4868	5392	5916	6459	7041
	3 I absorbée	(A)		5.53	6.32	7.11	7.88	8.65	9.41	10.2	10.9
60	1 P frigorifique	(Watt)			3857	5327	6969	8825	10941	13362	16131
	2 P absorbée	(W)			3627	4399	5105	5764	6395	7018	7653
	3 I absorbée	(A)			6.28	7.20	8.11	9.02	9.91	10.8	11.7

60 Hz R404A											
N°227JU-T											
4 T condensation	5 T évaporation	(°C)	-25	-20	-15	-10	-5	0	5	10	15
30	1 P frigorifique	(Watt)	6649	8787	11375	14337	17599	21088	24729	28446	32167
	2 P absorbée	(W)	3412	4004	4564	5107	5647	6197	6770	7380	8040
	3 I absorbée	(A)	5.72	6.47	7.23	7.99	8.76	9.53	10.3	11.1	11.9
40	1 P frigorifique	(Watt)	5277	7007	9208	11807	14728	17897	21239	24682	28149
	2 P absorbée	(W)	3304	4048	4737	5385	6004	6609	7213	7829	8472
	3 I absorbée	(A)	5.61	6.50	7.39	8.28	9.18	10.1	11.0	11.9	12.8
50	1 P frigorifique	(Watt)		5381	7103	9244	11730	14486	17438	20511	23632
	2 P absorbée	(W)		3866	4737	5541	6294	7007	7694	8370	9048
	3 I absorbée	(A)		6.41	7.43	8.45	9.48	10.5	11.5	12.6	13.6
60	1 P frigorifique	(Watt)			4952	6542	8499	10749	13216	15828	18508
	2 P absorbée	(W)			4443	5458	6396	7271	8096	8884	9650
	3 I absorbée	(A)			7.36	8.52	9.68	10.8	12.0	13.2	14.3

1 = cooling capacity 2 = power input 3 = current 4 = condensing temperature 5 = evaporating temperature

Nota : Tecumseh se réserve le droit de modifier les informations contenues dans ce document sans préavis.

Note : Tecumseh reserves the right to change information contained in this document without notification.