



Compressor  
Voltage Code : FZ

CAJ2440Z-FZ

Low Temp. Commercial (BP)

220 - 240V 1~ 50 Hz

R404A

AJ2427Z-FZ3C

Operating conditions : **Customized... / 50 Hz / Dew**

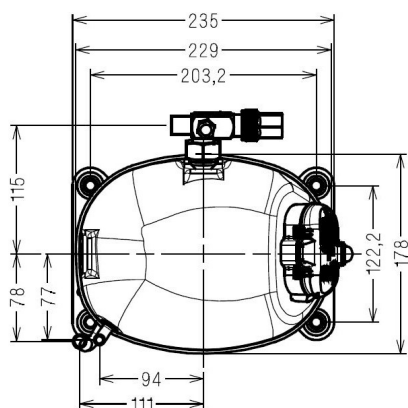
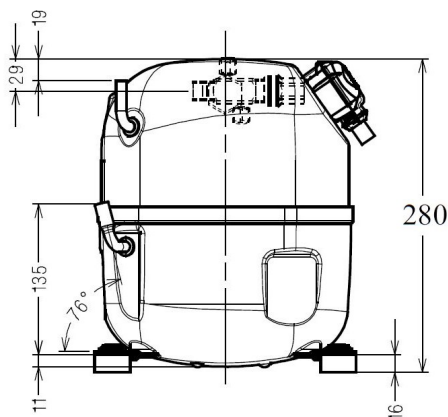
**Sound Power**  
ISO3745 / ISO 3743-1

Evaporating Temp. : -23.3 °C  
Superheat : 10.0 K  
Return gas temp. : 3.00 °C  
Condensing Temp. : 45.0 °C  
Subcooling : 10.0 K  
Liquid : 34.7 °C

Refrig. Capacity : **797 Watt**

Power Input : 693 Watt  
Amps : 3.14 A  
C.O.P : 1.15 Watt/W

56 dBA



Displacement (cc) 21.0  
Net Weight (Kg) 21.5  
Oil Quantity (cc) 475.0  
Oil Type Polyolester  
Expansion Device Capillary\_Tube/Expansion\_Valve  
Cooling Fan  
Main Winding (Ohm) 2.8  
Start Winding (Ohm) 11.6

Current  
RLA (A) 3  
MCC (A) 5.7  
LRA (A) 27

Electrical Equipment CSR

Overload T0348  
Time Check 7.5s - 14s / 15.4 A  
Open Temp 105° C  
Close Temp 52° C  
Optional MRA38111

Start Capacitor 88 µF / 250 V  
Run Capacitor 15 µF / 400 V

Potential Relay RVA4P\*\*  
Pick Up 300/328V  
Drop Out 60/121V  
Optional 3ARR3\*10AD\*

Refrigerating connection for OD  
Suction Tube 12.7 (1/2")  
Discharge Tube 7.9 (5/16")  
Process Tube 6.35 (1/4")

Certificates :



Note : Tecumseh reserves the right to change information contained in this document without notification.

<b>CAJ2440Z-FZ</b>	<b>Tension FZ : 220 - 240V 1~ 50 Hz</b>
--------------------	---

Les performances sont données dans les <b>conditions EN12900</b> :	Gaz aspirés : 20.0 °C
Condition Dew	Sous refroidissement : 0.0 K
The performance data are in <b>EN12900 conditions</b> :	Return gas : 20.0 °C
Dew Condition	Subcooling : 0.0 K

50 Hz R404A									
N°124HT-FZ									
4   T condensation	5   T évaporation	(°C)	-40	-35	-30	-25	-20	-15	-10
<b>30</b>	1   P frigorifique	(Watt)	432	610	828	1090	1401	1764	2183
	2   P absorbée	(W)	426	493	561	631	702	776	853
	3   I absorbée	(A)	1.93	2.21	2.51	2.82	3.15	3.50	3.86
<b>40</b>	1   P frigorifique	(Watt)	321	473	657	880	1145	1456	1817
	2   P absorbée	(W)	410	489	571	655	742	834	931
	3   I absorbée	(A)	1.87	2.22	2.58	2.96	3.35	3.76	4.18
<b>50</b>	1   P frigorifique	(Watt)		347	499	683	902	1161	1463
	2   P absorbée	(W)		471	566	665	768	878	994
	3   I absorbée	(A)		2.16	2.59	3.03	3.48	3.95	4.44
<b>60</b>	1   P frigorifique	(Watt)			353	498	672	879	1124
	2   P absorbée	(W)			552	665	785	912	1047
	3   I absorbée	(A)			2.53	3.04	3.55	4.09	4.64

--	--	--	--	--	--	--	--	--	--

1 = cooling capacity 2 = power input 3 = current 4 = condensing temperature 5 = evaporating temperature
---

<p><b>Nota : Tecumseh se réserve le droit de modifier les informations contenues dans ce document sans préavis.</b></p> <p><b>Note : Tecumseh reserves the right to change information contained in this document without notification.</b></p>
---