

Compressor

Voltage Code : TZ

TFH2511Z

Low Temp. Commercial (BP)

400V 3~ 50Hz / 440V 3~ 60 Hz

R404A

AHC2490ZTZ

Operating conditions : **Customized... / 50 Hz / Dew**

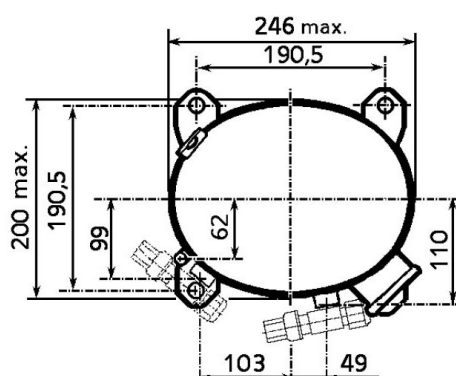
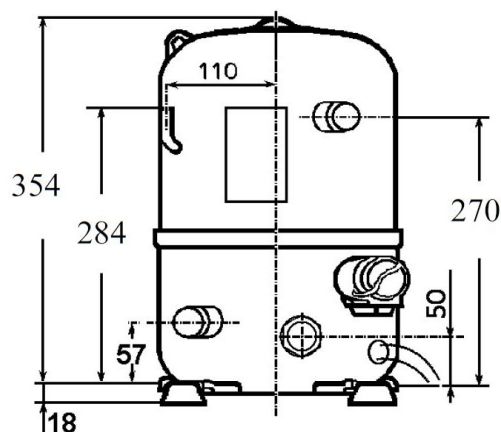
Sound Power
ISO3745 / ISO 3743-1

Evaporating Temp. : -23.3 °C
Superheat : 10.0 K
Return gas temp. : 3.00 °C
Condensing Temp. : 45.0 °C
Subcooling : 10.0 K
Liquid : 34.7 °C

Refrig. Capacity : **2594 Watt**

Power Input : 2090 Watt
Amps : 3.95 A
C.O.P : 1.24 Watt/W

77 dBA



Displacement (cc) 74.2
Net Weight (Kg) 32.6
Oil Quantity (cc) 1330.0
Oil Type Polyolester
Expansion Device Capillary_Tube/Expansion_Valve
Cooling Fan
Main Winding (Ohm) 5.1

Current
RLA (A) 3.7 | 3.8
MCC (A) 7.2 | 7.2
LRA (A) 28 | 32

Electrical Equipment TRI

Overload Interne

Refrigerating connection for OD

Suction Tube 15.9 (5/8")
Discharge Tube 12.7 (1/2")
Process Tube 6.35 (1/4")

Certificates :



Note : Tecumseh reserves the right to change information contained in this document without notification.

TFH2511Z	Tension TZ : 400V 3~ 50Hz / 440V 3~ 60 Hz
-----------------	--

Les performances sont données dans les conditions EN12900 :	Gaz aspirés : 20.0 °C
Condition Dew	Sous refroidissement : 0.0 K
The performance data are in EN12900 conditions :	Return gas : 20.0 °C
Dew Condition	Subcooling : 0.0 K

50 Hz R404A

N°126LU-T

4 T condensation	5 T évaporation	(°C)	-40	-35	-30	-25	-20	-15	-10
30	1 P frigorifique	(Watt)	1379	1999	2756	3663	4732	5976	7407
	2 P absorbée	(W)	1193	1443	1708	1992	2300	2637	3009
	3 I absorbée	(A)	2.83	3.09	3.39	3.75	4.15	4.60	5.10
40	1 P frigorifique	(Watt)	971	1490	2124	2887	3791	4849	6073
	2 P absorbée	(W)	1116	1388	1675	1980	2310	2668	3061
	3 I absorbée	(A)	2.76	3.05	3.40	3.79	4.23	4.72	5.26
50	1 P frigorifique	(Watt)		1050	1565	2188	2931	3807	4827
	2 P absorbée	(W)		1319	1637	1974	2334	2724	3147
	3 I absorbée	(A)		2.99	3.37	3.80	4.28	4.81	5.38
60	1 P frigorifique	(Watt)			1079	1566	2152	2848	3669
	2 P absorbée	(W)			1597	1975	2376	2806	3269
	3 I absorbée	(A)			3.31	3.78	4.30	4.86	5.48

60 Hz R404A

N°126LU-T

4 T condensation	5 T évaporation	(°C)	-40	-35	-30	-25	-20	-15	-10
30	1 P frigorifique	(Watt)	1719	2450	3280	4215	5262	6427	7717
	2 P absorbée	(W)	1475	1791	2086	2373	2666	2981	3330
	3 I absorbée	(A)	2.47	2.79	3.16	3.59	4.07	4.61	5.20
40	1 P frigorifique	(Watt)	1188	1868	2627	3471	4406	5440	6580
	2 P absorbée	(W)	1334	1738	2109	2460	2806	3161	3539
	3 I absorbée	(A)	2.45	2.83	3.26	3.75	4.29	4.88	5.53
50	1 P frigorifique	(Watt)		1233	1909	2651	3464	4355	5332
	2 P absorbée	(W)		1549	2014	2447	2863	3276	3700
	3 I absorbée	(A)		2.72	3.21	3.76	4.36	5.01	5.71
60	1 P frigorifique	(Watt)			1165	1792	2472	3209	4012
	2 P absorbée	(W)			1773	2306	2809	3297	3785
	3 I absorbée	(A)			3.02	3.62	4.28	4.99	5.75

1 = cooling capacity 2 = power input 3 = current 4 = condensing temperature 5 = evaporating temperature

Nota : Tecumseh se réserve le droit de modifier les informations contenues dans ce document sans préavis.

Note : Tecumseh reserves the right to change information contained in this document without notification.