

Compressor  
Voltage Code : TZ

# TAG2516Z

Low Temp. Commercial (BP)

400V 3~ 50Hz / 440V 3~ 60 Hz

R404A

AGB2513ZTZ

Operating conditions : **Customized... / 50 Hz / Dew**

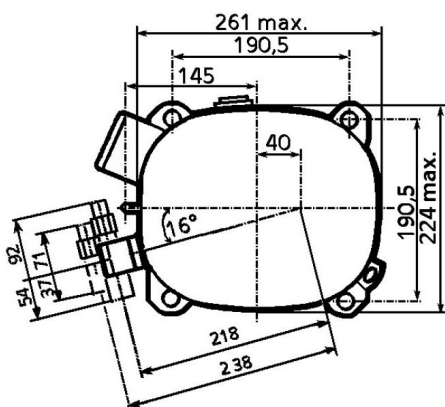
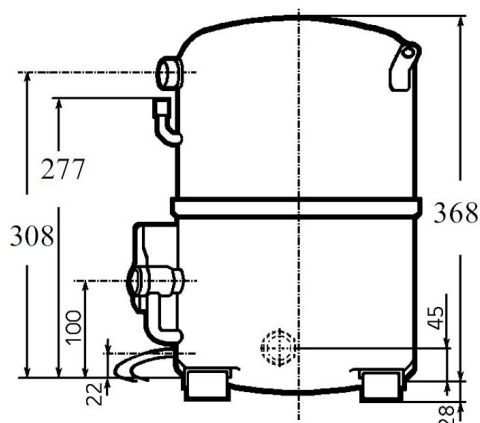
**Sound Power**  
ISO3745 / ISO 3743-1

Evaporating Temp. : -23.3 °C  
Superheat : 10.0 K  
Return gas temp. : 3.00 °C  
Condensing Temp. : 45.0 °C  
Subcooling : 10.0 K  
Liquid : 34.7 °C

Refrig. Capacity : **3558 Watt**

Power Input : 2940 Watt  
Amps : 5.16 A  
C.O.P : 1.21 Watt/W

77 dBA



Displacement (cc) 112.5  
Net Weight (Kg) 43.0  
Oil Quantity (cc) 1760.0  
Oil Type Polyolester  
Expansion Device Capillary\_Tube/Expansion\_Valve  
Cooling Fan  
Main Winding (Ohm) 4.6

**Current**  
RLA (A) 4.8 | 4.9  
MCC (A) 9.5 | 9.4  
LRA (A) 42 | 42

**Electrical Equipment** TRI

**Overload** Interne

**Refrigerating connection for OD**

Suction Tube 22.2 (7/8")  
Discharge Tube 15.9 (5/8")  
Process Tube 6.35 (1/4")

Certificates :



Note : Tecumseh reserves the right to change information contained in this document without notification.

<b>TAG2516Z</b>	<b>Tension TZ : 400V 3~ 50Hz / 440V 3~ 60 Hz</b>
-----------------	--

Les performances sont données dans les <b>conditions EN12900</b> :	Gaz aspirés : 20.0 °C
Condition Dew	Sous refroidissement : 0.0 K
The performance data are in <b>EN12900 conditions</b> :	Return gas : 20.0 °C
Dew Condition	Subcooling : 0.0 K

## 50 Hz R404A

**N°2564**

4   T condensation	5   T évaporation	(°C)	-40	-35	-30	-25	-20	-15	-10
<b>30</b>	1   P frigorifique	(Watt)	1734	2618	3714	5045	6636	8510	10691
	2   P absorbée	(W)	1551	1939	2336	2747	3176	3625	4099
	3   I absorbée	(A)	3.53	3.93	4.37	4.86	5.40	5.99	6.62
<b>40</b>	1   P frigorifique	(Watt)	1161	1917	2846	3971	5316	6904	8759
	2   P absorbée	(W)	1439	1873	2319	2780	3258	3759	4285
	3   I absorbée	(A)	3.40	3.87	4.39	4.95	5.56	6.22	6.92
<b>50</b>	1   P frigorifique	(Watt)		1251	2006	2918	4011	5307	6831
	2   P absorbée	(W)		1735	2231	2743	3274	3829	4410
	3   I absorbée	(A)		3.69	4.28	4.91	5.59	6.32	7.09
<b>60</b>	1   P frigorifique	(Watt)			1229	1922	2756	3754	4940
	2   P absorbée	(W)			2061	2627	3214	3824	4463
	3   I absorbée	(A)			4.04	4.75	5.50	6.30	7.14

## 60 Hz R404A

**N°2564**

4   T condensation	5   T évaporation	(°C)	-40	-35	-30	-25	-20	-15	-10
<b>30</b>	1   P frigorifique	(Watt)	2226	3321	4622	6144	7900	9906	12174
	2   P absorbée	(W)	1781	2227	2678	3142	3626	4137	4683
	3   I absorbée	(A)	3.15	3.62	4.12	4.65	5.22	5.83	6.51
<b>40</b>	1   P frigorifique	(Watt)	1430	2414	3573	4923	6477	8248	10252
	2   P absorbée	(W)	1530	2071	2610	3155	3713	4292	4899
	3   I absorbée	(A)	2.89	3.46	4.05	4.66	5.32	6.02	6.78
<b>50</b>	1   P frigorifique	(Watt)		1528	2528	3687	5019	6539	8260
	2   P absorbée	(W)		1749	2397	3043	3696	4363	5051
	3   I absorbée	(A)		3.11	3.81	4.54	5.30	6.11	6.97
<b>60</b>	1   P frigorifique	(Watt)			1505	2455	3549	4798	6218
	2   P absorbée	(W)			1992	2760	3528	4303	5093
	3   I absorbée	(A)			3.36	4.22	5.11	6.04	7.02

1 = cooling capacity 2 = power input 3 = current 4 = condensing temperature 5 = evaporating temperature

**Nota : Tecumseh se réserve le droit de modifier les informations contenues dans ce document sans préavis.**

**Note : Tecumseh reserves the right to change information contained in this document without notification.**