



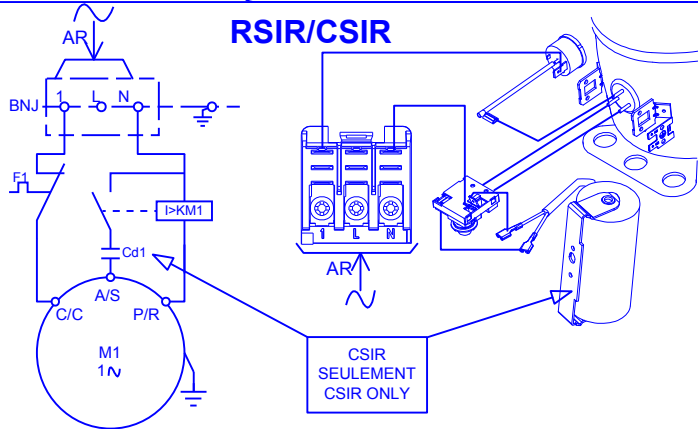
R290

: Charge de **150gr** maximum, sinon appliquer les normes Européennes en vigueur
: **150gr** Maximum refrigerant charge, otherwise conform to European standards

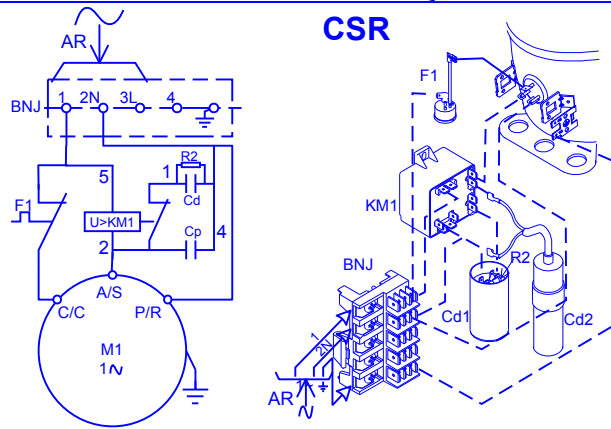
AE
AEZ

AE²

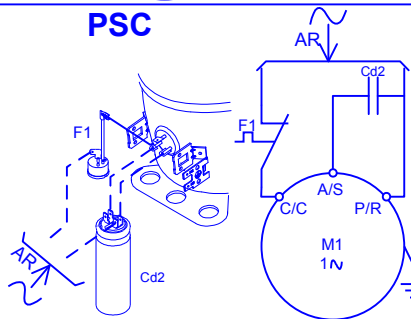
RSIR/CSIR



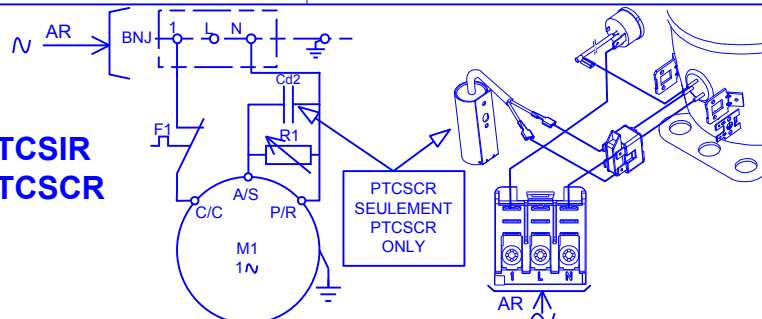
CSR



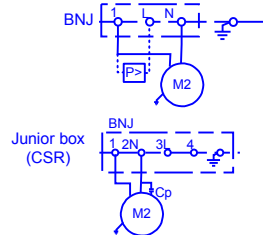
PSC



PTCSR PTCSR



GROUPES- CONDENSING UNITS AGGREGATE - GRUPOS-GRUPPI



--- A câbler si non monté d'usine
To be wired if not factory assembled
Zu verdrahten, sofern nicht werkseitig montiert
A cablar si no viene montado de fábrica
A cablare se non montato in fabbrica

	FRANÇAIS	ITALIANO	ENGLISH	DEUTSCH	ESPAÑOL
Cd1	Condensateur de Démarrage	Condensatore di spunto	Start Capacitor	Anlaufkondensator	Condensador de arranque
Cd2	Condensateur Permanent	Condensatore permanente	Run Capacitor	Betriebskondensator	Condensador permanente
F1/2	Protecteur/Thermostat Interne	Protettore/termostato interno	Overload/Internal Thermostat	Schutzschalter/Interner Thermostat	Protector/Termostato interno
BNJ	Bornier	morsettierra	Connector block	Klemmkasten	Bloque de conexión
KM1	Relais	Relé	Relay	Relais	Relé
M1	Compresseur	Compressore	Compressor	Kompressor	Compresor
M2	Ventilateur	Ventilatore	Fan	Ventilator	Ventilador
R1	C.T.P.	C.T.P.	P.T.C.	P.T.C.	C.T.P.
R2	Résistance de décharge	Bleeder resistor	Pressure switch	Pressostat	Résistencia de descarga
P	Pressostat	Pressostato			Pressostato



Tecumseh



Réf. 366265
ind.g

**L'UNITE
HERMETIQUE**