



# Compressor

Voltage Code : FZ

## AE4440U-FZ1A

High Temp. Commercial (HP)

220 - 240V 1~ 50 Hz

R290

AE4440U-FZ1A\_BR

Operating conditions : **Customized... / 50 Hz / Dew**

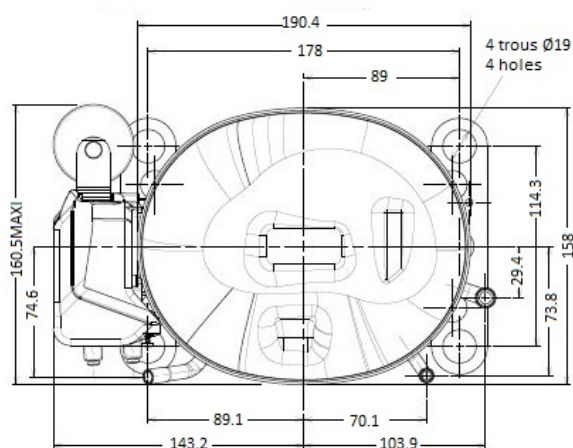
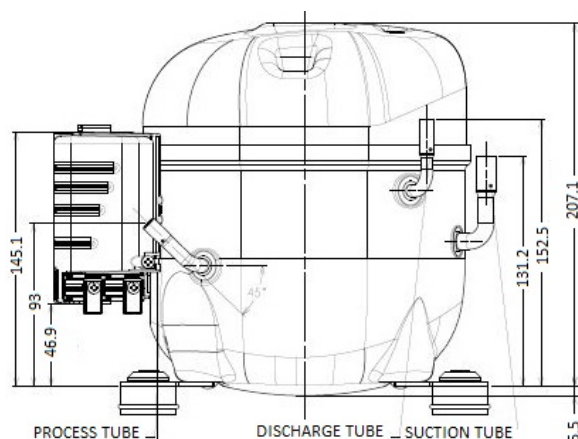
**Sound Power**  
ISO3745 / ISO 3743-1

Evaporating Temp. : -10.0 °C  
Superheat : 10.0 K  
Return gas temp. : 10.0 °C  
Condensing Temp. : 45.0 °C  
Subcooling : 10.0 K  
Liquid : 34.7 °C

Refrig. Capacity : **552 Watt**

Power Input : 308 Watt  
Amps : 2.00 A  
C.O.P : 1.79 Watt/W

59 dBA



Displacement (cc) 8.02  
Net Weight (Kg) 10.3  
Oil Quantity (cc) 280.0  
Oil Type Polyolester  
Expansion Device Capillary\_Tube/Expansion\_Valve  
Cooling Fan  
Main Winding (Ohm) 8.24  
Start Winding (Ohm) 24.11

Current  
RLA (A) 2.38  
LRA (A) 12.5

Electrical Equipment CSIR

Overload MRA6000  
Time Check 6.5s - 16s / 09.2 A  
Open Temp 120° C  
Close Temp 52° C

Start Capacitor 64 µF / 250 V

Current Relay 9660D\*\*\*-143  
Pick Up 6.80A  
Drop Out 5.75A

Refrigerating connection for OD  
Suction Tube 9.5 (3/8")  
Discharge Tube 6.35 (1/4")  
Process Tube 6.35 (1/4")

Certificates :



Note : Tecumseh reserves the right to change information contained in this document without notification.

<b>AE4440U-FZ1A</b>	<b>Tension FZ : 220 - 240V 1~ 50 Hz</b>
---------------------	---

Les performances sont données dans les <b>conditions EN12900</b> :	Gaz aspirés : 20.0 °C
Condition Dew	Sous refroidissement : 0.0 K
The performance data are in <b>EN12900 conditions</b> :	Return gas : 20.0 °C
Dew Condition	Subcooling : 0.0 K

50 Hz R290											
N°3059											
4   T condensation	5   T évaporation	(°C)	-25	-20	-15	-10	-5	0	5	10	15
<b>30</b>	1   P frigorifique	(Watt)	346	442	555	687	842	1020	1224	1458	1722
	2   P absorbée	(W)	220	236	250	262	271	275	275	269	257
	3   I absorbée	(A)	1.73	1.79	1.83	1.86	1.89	1.90	1.90	1.89	1.87
<b>40</b>	1   P frigorifique	(Watt)		383	482	597	729	882	1058	1259	1486
	2   P absorbée	(W)		256	275	293	309	321	330	334	333
	3   I absorbée	(A)		1.82	1.89	1.95	2.00	2.04	2.07	2.09	2.10
<b>50</b>	1   P frigorifique	(Watt)			411	508	620	748	895	1063	1255
	2   P absorbée	(W)			299	322	344	364	380	393	402
	3   I absorbée	(A)			1.96	2.05	2.13	2.20	2.25	2.30	2.34
<b>60</b>	1   P frigorifique	(Watt)				424	515	618	737	873	1029
	2   P absorbée	(W)				353	379	405	429	450	468
	3   I absorbée	(A)				2.15	2.25	2.35	2.44	2.52	2.58

--	--	--	--	--	--	--	--	--	--	--	--

1 = cooling capacity 2 = power input 3 = current 4 = condensing temperature 5 = evaporating temperature
---

<p><b>Nota : Tecumseh se réserve le droit de modifier les informations contenues dans ce document sans préavis.</b></p> <p><b>Note : Tecumseh reserves the right to change information contained in this document without notification.</b></p>
---