

Compressor

Voltage Code : FZ

THB4422YFZ

High Temp. Commercial (HP)

220 - 240V 1~ 50 Hz

R134a

THB4422YFZ

Operating conditions : **Customized... / 50 Hz / Dew**

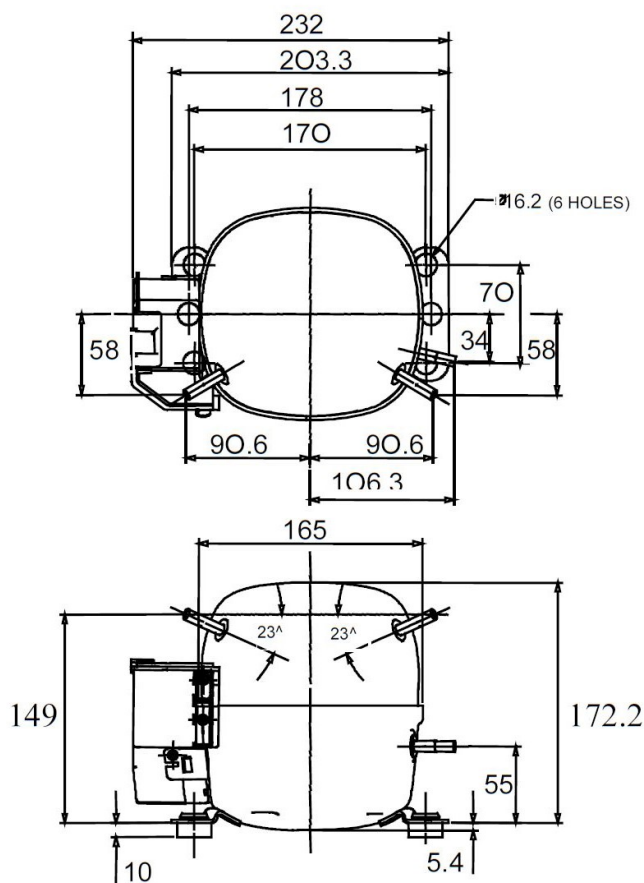
Sound Power
ISO3745 / ISO 3743-1

Evaporating Temp. : -10.0 °C
Superheat : 10.0 K
Return gas temp. : 10.0 °C
Condensing Temp. : 45.0 °C
Subcooling : 10.0 K
Liquid : 34.7 °C

Refrig. Capacity : **266 Watt**

Power Input : 182 Watt
Amps : 1.39 A
C.O.P : 1.46 Watt/W

47 dBA



Displacement (cc) 5.9
Net Weight (Kg) 7.4
Oil Quantity (cc) 250.0
Oil Type Polyolester
Expansion Device Capillary_Tube/Expansion_Valve
Cooling Fan
Main Winding (Ohm) 11.7
Start Winding (Ohm) 22.5

Current
RLA (A) 1.64
MCC (A) 1.8
LRA (A) 9

Electrical Equipment CSIR

Overload T8826
Time Check 6.5s - 16s / 7 A
Open Temp 110° C
Close Temp 52° C

Start Capacitor 72-88 μ F / 250 V

Current Relay 9660C-***-124
Pick Up 4.57A
Drop Out 3.85A
Optional RP37**

Refrigerating connection for OD
Suction Tube 6.35 (1/4")
Discharge Tube 6.35 (1/4")
Process Tube 4.76 (3/16")

Certificates :



Note : Tecumseh reserves the right to change information contained in this document without notification.

| | |
|-------------------|---|
| THB4422YFZ | Tension FZ : 220 - 240V 1~ 50 Hz |
|-------------------|---|

| | |
|--|------------------------------|
| Les performances sont données dans les conditions EN12900 : | Gaz aspirés : 20.0 °C |
| Condition Dew | Sous refroidissement : 0.0 K |
| The performance data are in EN12900 conditions : | Return gas : 20.0 °C |
| Dew Condition | Subcooling : 0.0 K |

| 50 Hz R134a | | | | | | | | | | | |
|--------------------|--------------------|--------|------|------|------|------|------|------|------|------|------|
| N°211LS-FZ | | | | | | | | | | | |
| 4 T condensation | 5 T évaporation | (°C) | -25 | -20 | -15 | -10 | -5 | 0 | 5 | 10 | 15 |
| 30 | 1 P frigorifique | (Watt) | 148 | 196 | 255 | 324 | 406 | 500 | 610 | 736 | 879 |
| | 2 P absorbée | (W) | 127 | 139 | 152 | 164 | 177 | 191 | 206 | 222 | 239 |
| | 3 I absorbée | (A) | 1.30 | 1.31 | 1.33 | 1.35 | 1.38 | 1.42 | 1.46 | 1.51 | 1.57 |
| 40 | 1 P frigorifique | (Watt) | 125 | 170 | 223 | 285 | 358 | 443 | 541 | 653 | 782 |
| | 2 P absorbée | (W) | 131 | 146 | 161 | 176 | 192 | 209 | 226 | 245 | 266 |
| | 3 I absorbée | (A) | 1.29 | 1.31 | 1.34 | 1.37 | 1.42 | 1.46 | 1.52 | 1.58 | 1.65 |
| 50 | 1 P frigorifique | (Watt) | | 143 | 189 | 243 | 307 | 380 | 466 | 564 | 676 |
| | 2 P absorbée | (W) | | 150 | 168 | 187 | 206 | 226 | 247 | 270 | 294 |
| | 3 I absorbée | (A) | | 1.31 | 1.35 | 1.40 | 1.45 | 1.51 | 1.58 | 1.65 | 1.73 |
| 60 | 1 P frigorifique | (Watt) | | | 157 | 202 | 255 | 316 | 387 | 470 | 565 |
| | 2 P absorbée | (W) | | | 173 | 196 | 219 | 243 | 269 | 295 | 323 |
| | 3 I absorbée | (A) | | | 1.37 | 1.43 | 1.50 | 1.57 | 1.65 | 1.73 | 1.82 |

| | | | | | | | | | | | |
|--|--|--|--|--|--|--|--|--|--|--|--|
| | | | | | | | | | | | |
|--|--|--|--|--|--|--|--|--|--|--|--|

| |
|---|
| 1 = cooling capacity 2 = power input 3 = current 4 = condensing temperature 5 = evaporating temperature |
|---|

| |
|---|
| <p>Nota : Tecumseh se réserve le droit de modifier les informations contenues dans ce document sans préavis.</p> <p>Note : Tecumseh reserves the right to change information contained in this document without notification.</p> |
|---|