



Compressor
Voltage Code : FZ

FH4522F

High Temp. Commercial (HP)

220 - 240V 1~ 50 Hz

R22

AHC4522EFZ

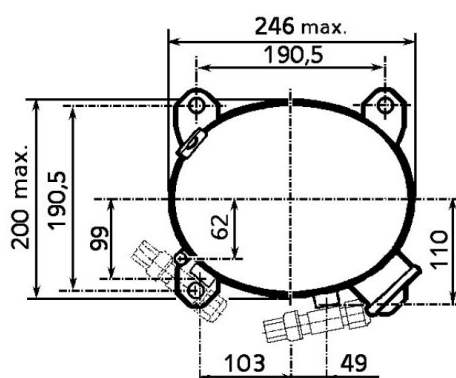
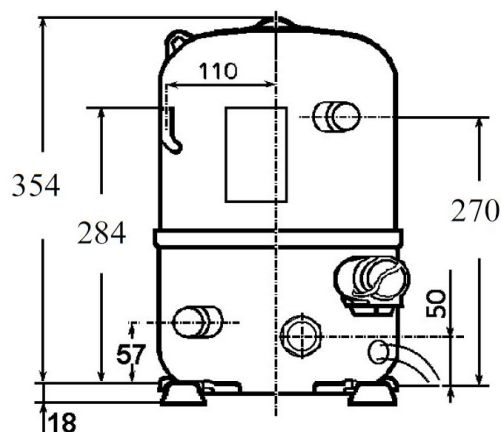
Operating conditions : **Customized... / 50 Hz / Dew**

Sound Power
ISO3745 / ISO 3743-1

Evaporating Temp. : -10.0 °C
Superheat : 10.0 K
Return gas temp. : 10.0 °C
Condensing Temp. : 45.0 °C
Subcooling : 10.0 K
Liquid : 34.7 °C

Refrig. Capacity : 2694 Watt
Power Input : 1414 Watt
Amps : 6.44 A
C.O.P : 1.90 Watt/W

67 dBA



Displacement (cc) 39.95
Net Weight (Kg) 32.0
Oil Quantity (cc) 1330.0
Oil Type Mineral
Expansion Device Capillary_Tube/Expansion_Valve
Cooling Fan
Main Winding (Ohm) 1.3
Start Winding (Ohm) 4.21

Current
RLA (A) 8.4
MCC (A) 12.1
LRA (A) 46

Electrical Equipment CSR

Overload Interne
Start Capacitor 125 µF / 330 V
Run Capacitor 30 µF / 400 V

Potential Relay RVA4I**
Pick Up 204/233V
Drop Out 50/110V
Optional 3ARR3*6AU*

Refrigerating connection for OD
Suction Tube 15.9 (5/8")
Discharge Tube 12.7 (1/2")
Process Tube 6.35 (1/4")

Certificates :



Note : Tecumseh reserves the right to change information contained in this document without notification.

FH4522F

Tension FZ : 220 - 240V 1~ 50 Hz

Les performances sont données dans les **conditions EN12900** :
Condition Dew

Gaz aspirés : 20.0 °C
Sous refroidissement : 0.0 K

The performance data are in **EN12900 conditions** :
Dew Condition

Return gas : 20.0 °C
Subcooling : 0.0 K

50 Hz R22

N°236CT-F

4 T condensation	5 T évaporation	(°C)	-20	-15	-10	-5	0	5	10	15
40	1 P frigorifique	(Watt)	1643	2210	2903	3719	4655	5705	6867	8136
	2 P absorbée	(W)	1216	1303	1396	1494	1596	1704	1816	1933
	3 I absorbée	(A)	5.31	5.89	6.42	6.92	7.38	7.81	8.20	8.55
50	1 P frigorifique	(Watt)	1283	1774	2379	3092	3911	4829	5845	6951
	2 P absorbée	(W)	1149	1291	1434	1579	1725	1872	2020	2170
	3 I absorbée	(A)	5.00	5.75	6.47	7.15	7.80	8.42	8.99	9.54
60	1 P frigorifique	(Watt)		1311	1836	2457	3167	3964	4842	5795
	2 P absorbée	(W)		1278	1473	1665	1854	2042	2227	2410
	3 I absorbée	(A)		5.64	6.53	7.40	8.23	9.03	9.79	10.5

© 2019 Tecumseh Products Company
All rights reserved

1 = cooling capacity 2 = power input 3 = current 4 = condensing temperature 5 = evaporating temperature

Nota : Tecumseh se réserve le droit de modifier les informations contenues dans ce document sans préavis.

Note : Tecumseh reserves the right to change information contained in this document without notification.