



Compressor
Voltage Code : TZ

TAJ4517T-TZ

High Temp. Commercial (HP)

400V 3~ 50Hz / 440V 3~ 60 Hz

R22

AJ4517T-TZ1C

Operating conditions : **Customized... / 50 Hz / Dew**

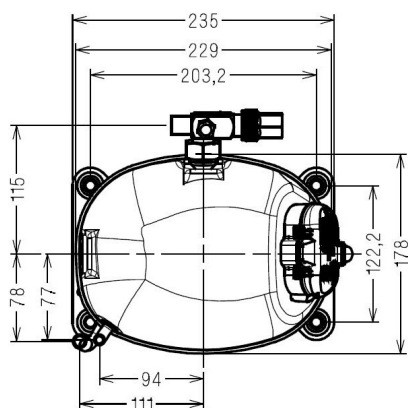
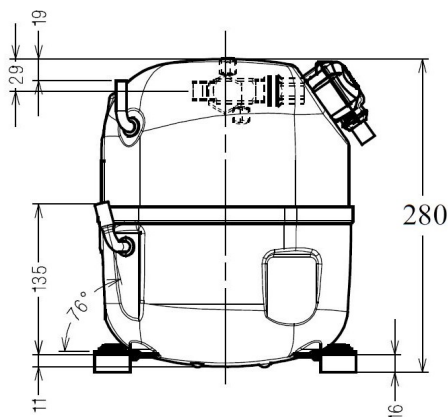
Sound Power
ISO3745 / ISO 3743-1

Evaporating Temp. : -10.0 °C
Superheat : 10.0 K
Return gas temp. : 10.0 °C
Condensing Temp. : 45.0 °C
Subcooling : 10.0 K
Liquid : 34.7 °C

Refrig. Capacity : **2046 Watt**

Power Input : 1060 Watt
Amps : 2.06 A
C.O.P : 1.93 Watt/W

70 dBA



Displacement (cc) 25.95
Net Weight (Kg) 19.3
Oil Quantity (cc) 475.0
Oil Type Mineral
Expansion Device Capillary_Tube/Expansion_Valve
Cooling Fan
Main Winding (Ohm) 11.0

Current
RLA (A) 2.5 | 2.7
MCC (A) 3.7 | 3.7
LRA (A) 18 | 18

Electrical Equipment TRI

Overload Interne

Refrigerating connection for OD

Suction Tube 15.9 (5/8")
Discharge Tube 9.5 (3/8")
Process Tube 6.35 (1/4")

Certificates :



Note : Tecumseh reserves the right to change information contained in this document without notification.

TAJ4517T-TZ	Tension TZ : 400V 3~ 50Hz / 440V 3~ 60 Hz
--------------------	--

Les performances sont données dans les conditions EN12900 :	Gaz aspirés : 20.0 °C
Condition Dew	Sous refroidissement : 0.0 K
The performance data are in EN12900 conditions :	Return gas : 20.0 °C
Dew Condition	Subcooling : 0.0 K

50 Hz R22

N°234LU-TZ

4 T condensation	5 T évaporation	(°C)	-20	-15	-10	-5	0	5	10	15
40	1 P frigorifique	(Watt)	1264	1706	2205	2758	3364	4020	4725	5477
	2 P absorbée	(W)	928	987	1046	1106	1165	1225	1285	1345
	3 I absorbée	(A)	1.99	2.02	2.05	2.09	2.14	2.19	2.25	2.31
50	1 P frigorifique	(Watt)	982	1369	1807	2293	2826	3403	4022	4681
	2 P absorbée	(W)	877	978	1075	1168	1259	1346	1429	1509
	3 I absorbée	(A)	1.89	1.97	2.07	2.16	2.26	2.36	2.46	2.57
60	1 P frigorifique	(Watt)		1012	1396	1822	2288	2793	3332	3905
	2 P absorbée	(W)		967	1103	1231	1353	1467	1575	1675
	3 I absorbée	(A)		1.94	2.08	2.23	2.38	2.53	2.68	2.83

60 Hz R22

N°234LU-TZ

4 T condensation	5 T évaporation	(°C)	-20	-15	-10	-5	0	5	10	15
40	1 P frigorifique	(Watt)	1504	2047	2643	3291	3990	4736	5529	6365
	2 P absorbée	(W)	1105	1203	1298	1393	1486	1578	1668	1757
	3 I absorbée	(A)	1.83	1.94	2.05	2.16	2.26	2.36	2.46	2.55
50	1 P frigorifique	(Watt)	1165	1641	2165	2736	3351	4008	4706	5440
	2 P absorbée	(W)	1043	1191	1334	1472	1605	1733	1856	1973
	3 I absorbée	(A)	1.72	1.90	2.07	2.23	2.39	2.55	2.70	2.84
60	1 P frigorifique	(Watt)		1213	1672	2173	2713	3288	3898	4538
	2 P absorbée	(W)		1179	1370	1552	1726	1890	2046	2192
	3 I absorbée	(A)		1.86	2.09	2.31	2.52	2.73	2.94	3.13

1 = cooling capacity 2 = power input 3 = current 4 = condensing temperature 5 = evaporating temperature

Nota : Tecumseh se réserve le droit de modifier les informations contenues dans ce document sans préavis.

Note : Tecumseh reserves the right to change information contained in this document without notification.