



Compressor
Voltage Code : TZ

TFH4540F

High Temp. Commercial (HP)

400V 3~ 50Hz / 440V 3~ 60 Hz

R22

AHC4540ETZ

Operating conditions : **Customized... / 50 Hz / Dew**

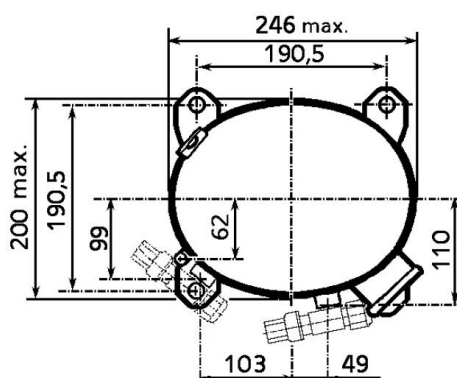
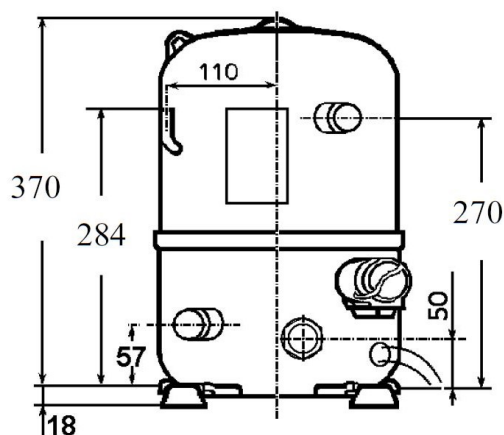
Sound Power
ISO3745 / ISO 3743-1

Evaporating Temp. : -10.0 °C
Superheat : 10.0 K
Return gas temp. : 10.0 °C
Condensing Temp. : 45.0 °C
Subcooling : 10.0 K
Liquid : 34.7 °C

Refrig. Capacity : **5259 Watt**

Power Input : 2486 Watt
Amps : 4.64 A
C.O.P : 2.12 Watt/W

75 dBA



Displacement (cc) 74.25
Net Weight (Kg) 33.0
Oil Quantity (cc) 1330.0
Oil Type Mineral
Expansion Device Capillary_Tube/Expansion_Valve
Cooling Fan
Main Winding (Ohm) 4.3

Current
RLA (A) 6.08 | 6.56
MCC (A) 8.4 | 8.71
LRA (A) 36 | 39

Electrical Equipment TRI

Overload Interne

Refrigerating connection for OD

Suction Tube 22.2 (7/8")
Discharge Tube 12.7 (1/2")
Process Tube 6.35 (1/4")

Certificates :



Note : Tecumseh reserves the right to change information contained in this document without notification.

TFH4540F	Tension TZ : 400V 3~ 50Hz / 440V 3~ 60 Hz
-----------------	--------------------------------------------------

Les performances sont données dans les **conditions EN12900** :
Condition Dew

Gaz aspirés : 20.0 °C
Sous refroidissement : 0.0 K

The performance data are in **EN12900 conditions** :
Dew Condition

Return gas : 20.0 °C
Subcooling : 0.0 K

50 Hz R22

N°236LU-T

4 T condensation	5 T évaporation	(°C)	-20	-15	-10	-5	0	5	10	15
40	1 P frigorifique	(Watt)	2764	4153	5666	7298	9044	10902	12864	14928
	2 P absorbée	(W)	1950	2200	2454	2710	2969	3230	3495	3763
	3 I absorbée	(A)	3.97	4.29	4.62	4.95	5.28	5.61	5.93	6.26
50	1 P frigorifique	(Watt)	2135	3332	4644	6067	7596	9226	10950	12764
	2 P absorbée	(W)	1836	2179	2522	2865	3207	3548	3889	4229
	3 I absorbée	(A)	3.74	4.20	4.66	5.12	5.58	6.04	6.51	6.97
60	1 P frigorifique	(Watt)		2459	3589	4821	6149	7569	9073	10654
	2 P absorbée	(W)		2156	2590	3020	3447	3869	4287	4701
	3 I absorbée	(A)		4.12	4.70	5.29	5.89	6.48	7.09	7.69

60 Hz R22

N°236LU-T

4 T condensation	5 T évaporation	(°C)	-20	-15	-10	-5	0	5	10	15
40	1 P frigorifique	(Watt)	3297	4987	6791	8704	10722	12840	15053	17357
	2 P absorbée	(W)	2743	2943	3171	3428	3713	4028	4371	4743
	3 I absorbée	(A)	4.32	4.56	4.83	5.14	5.50	5.89	6.32	6.80
50	1 P frigorifique	(Watt)	2542	4001	5567	7237	9005	10866	12814	14843
	2 P absorbée	(W)	2597	2915	3257	3623	4012	4425	4862	5322
	3 I absorbée	(A)	4.09	4.45	4.86	5.31	5.81	6.35	6.94	7.57
60	1 P frigorifique	(Watt)		2952	4303	5751	7290	8915	10618	12393
	2 P absorbée	(W)		2885	3343	3818	4313	4826	5357	5907
	3 I absorbée	(A)		4.37	4.91	5.49	6.13	6.82	7.55	8.33

1 = cooling capacity 2 = power input 3 = current 4 = condensing temperature 5 = evaporating temperature

Nota : Tecumseh se réserve le droit de modifier les informations contenues dans ce document sans préavis.

Note : Tecumseh reserves the right to change information contained in this document without notification.