



Compressor  
Voltage Code : FZ

THB4415YFZ

High Temp. Commercial (HP)

220 - 240V 1~ 50 Hz

R134a

THB4415YFZ

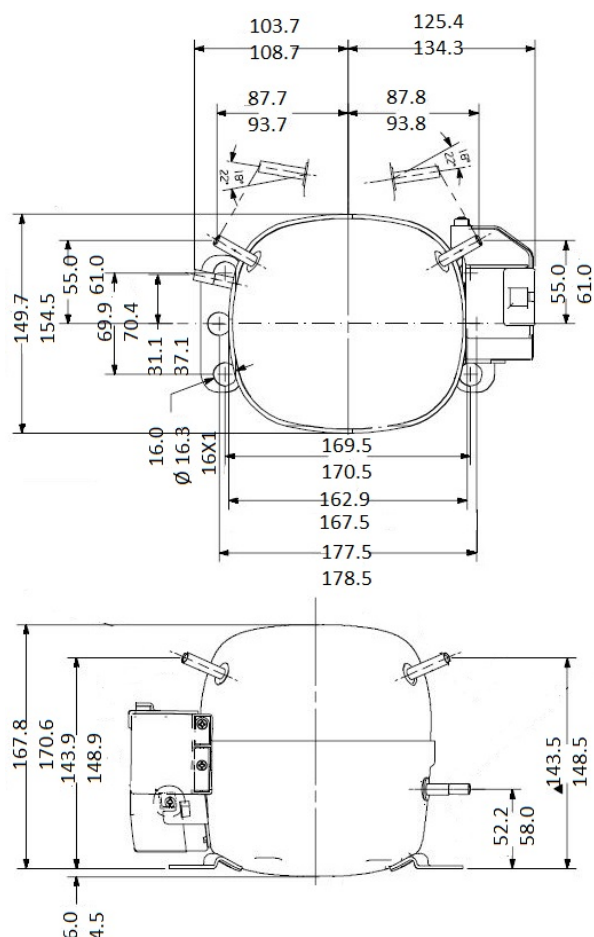
Operating conditions : **Customized... / 50 Hz / Dew**

**Sound Power**  
ISO3745 / ISO 3743-1

Evaporating Temp. : -10.0 °C  
Superheat : 10.0 K  
Return gas temp. : 10.0 °C  
Condensing Temp. : 45.0 °C  
Subcooling : 10.0 K  
Liquid : 34.7 °C

Refrig. Capacity : **184 Watt**  
  
Power Input : 126 Watt  
Amps : 1.06 A  
C.O.P : 1.46 Watt/W

43 dBA



**Displacement (cc)** 4.23  
**Net Weight (Kg)** 7.3  
**Oil Quantity (cc)** 250.0  
**Oil Type** Polyolester  
**Expansion Device** Capillary\_Tube/Expansion\_Valve  
**Cooling** Static  
**Main Winding (Ohm)** 14.4  
**Start Winding (Ohm)** 28.9

**Current**  
RLA (A) 1.15  
MCC (A) 1.32  
LRA (A) 7

**Electrical Equipment** CSIR

**Overload** T14529  
Time Check 6.5s - 16s / 5 A  
Open Temp 120° C  
Close Temp 52° C

**Start Capacitor** 47-56 µF / 250 V

**Current Relay** 9660C-\*\*\*-115  
Pick Up 3,50A  
Drop Out 2.95A  
Optional RP32\*\*

**Refrigerating connection for OD**  
Suction Tube 6.35 (1/4")  
Discharge Tube 6.35 (1/4")  
Process Tube 4.76 (3/16")

Certificates :



Note : Tecumseh reserves the right to change information contained in this document without notification.

<b>THB4415YFZ</b>	<b>Tension FZ : 220 - 240V 1~ 50 Hz</b>
-------------------	---

Les performances sont données dans les <b>conditions EN12900</b> :	Gaz aspirés : 20.0 °C
Condition Dew	Sous refroidissement : 0.0 K
The performance data are in <b>EN12900 conditions</b> :	Return gas : 20.0 °C
Dew Condition	Subcooling : 0.0 K

50 Hz R134a											
N°211GE-FZ											
4   T condensation	5   T évaporation	(°C)	-25	-20	-15	-10	-5	0	5	10	15
<b>30</b>	1   P frigorifique	(Watt)	98.3	132	176	228	290	362	445	539	644
	2   P absorbée	(W)	91.3	98.5	106	114	122	129	135	139	141
	3   I absorbée	(A)	1.01	1.02	1.04	1.05	1.07	1.09	1.11	1.12	1.14
<b>40</b>	1   P frigorifique	(Watt)	82.9	114	152	198	251	314	385	466	556
	2   P absorbée	(W)	95.1	103	112	122	132	141	149	156	161
	3   I absorbée	(A)	0.99	1.01	1.03	1.05	1.08	1.10	1.13	1.15	1.18
<b>50</b>	1   P frigorifique	(Watt)		92.9	127	168	214	268	329	398	475
	2   P absorbée	(W)		107	118	129	141	152	163	173	182
	3   I absorbée	(A)		1.01	1.04	1.07	1.10	1.13	1.16	1.19	1.23
<b>60</b>	1   P frigorifique	(Watt)			101	137	178	225	277	335	400
	2   P absorbée	(W)			123	136	150	165	178	192	204
	3   I absorbée	(A)			1.06	1.09	1.13	1.17	1.21	1.25	1.29

--	--	--	--	--	--	--	--	--	--	--	--

1 = cooling capacity 2 = power input 3 = current 4 = condensing temperature 5 = evaporating temperature
---

<p><b>Nota : Tecumseh se réserve le droit de modifier les informations contenues dans ce document sans préavis.</b></p> <p><b>Note : Tecumseh reserves the right to change information contained in this document without notification.</b></p>
---